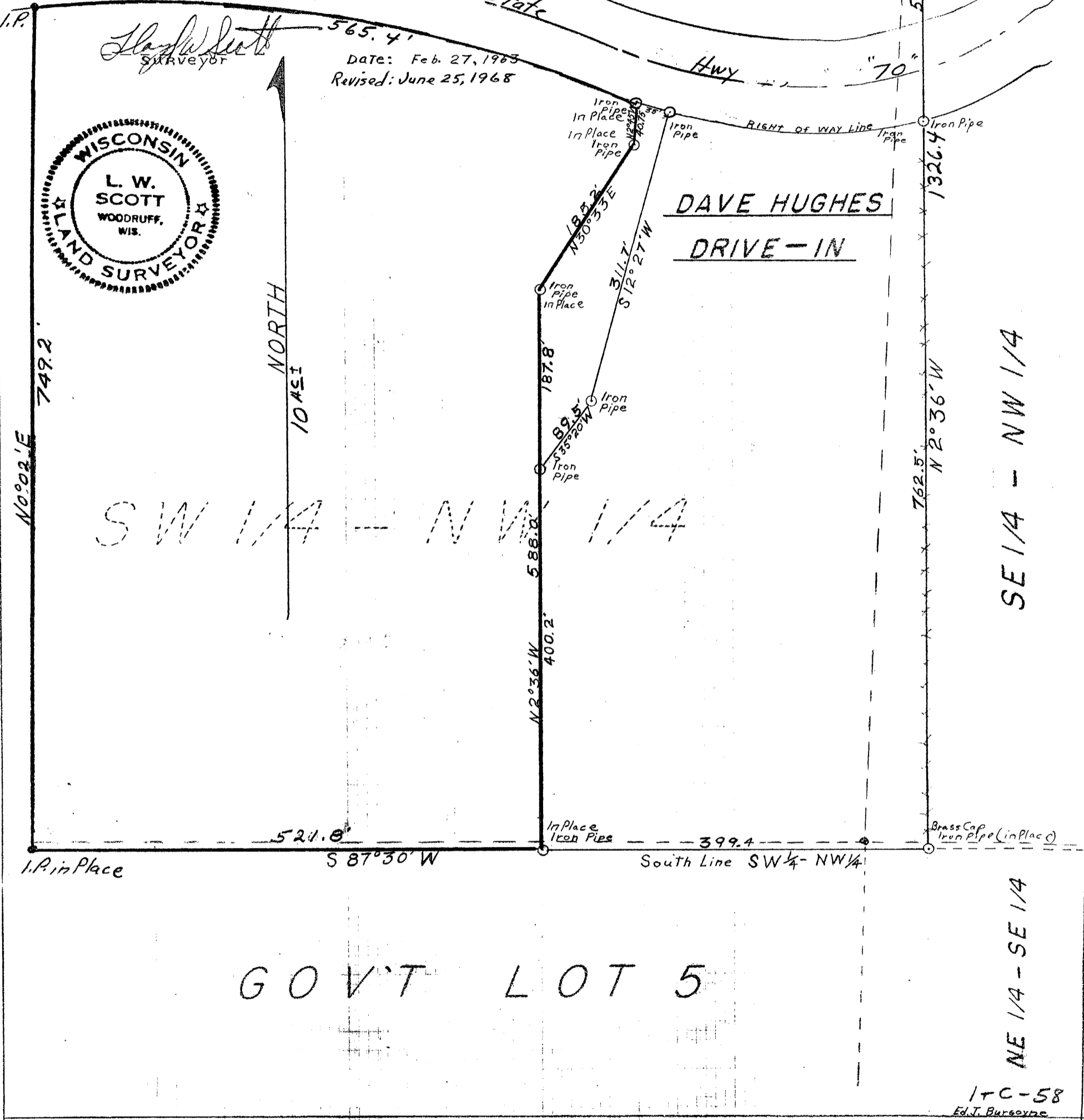


Part of
SW 1/4 - NW 1/4
SEC. 11 T39N R5E

ONEIDA COUNTY, WISCONSIN State

L. W. Scott
SURVEYOR

DATE: Feb. 27, 1963
Revised: June 25, 1968



DAVE HUGHES
DRIVE-IN

SW 1/4 - NW 1/4

SE 1/4 - NW 1/4

GOV'T LOT 5

NE 1/4 - SE 1/4

1-C-58
Ed. J. Burgoyne

MAP #	A1653
DATE FILED	OCT 31 2005
BY	<i>RL</i>
DESCRIPTION FILED	
ONEIDA CO. SURVEYOR'S OFFICE	