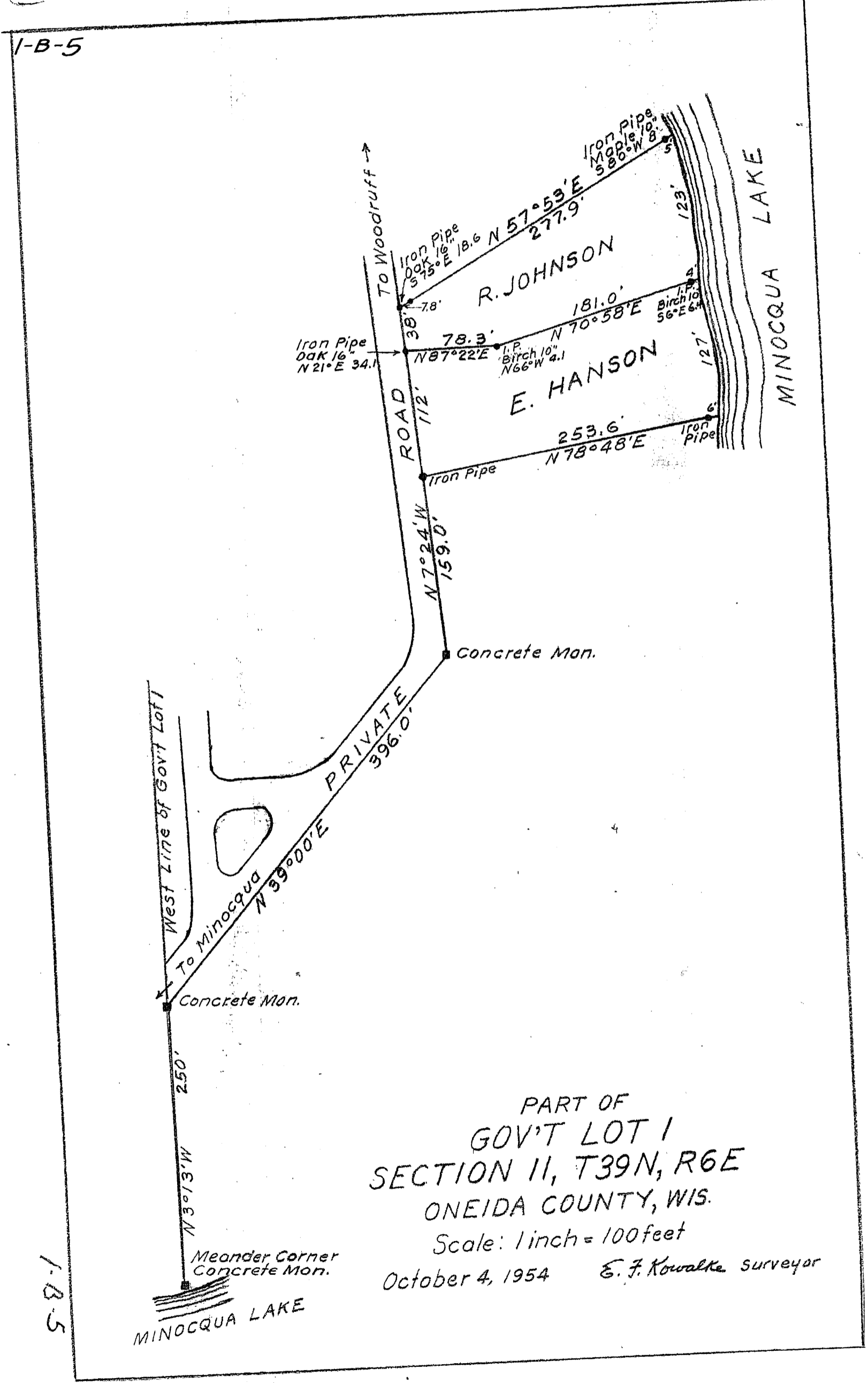


A1662

MAP # A1662
 DATE FILED OCT 31 2005
 BY *[Signature]*
 DESCRIPTION FILED
 ONEIDA CO. SURVEYOR'S OFFICE

①

1-B-5



PART OF
 GOV'T LOT 1
 SECTION 11, T39N, R6E
 ONEIDA COUNTY, WIS.

Scale: 1 inch = 100 feet
 October 4, 1954 E. F. Kowalke surveyor

1-B-5

A1662

A1662