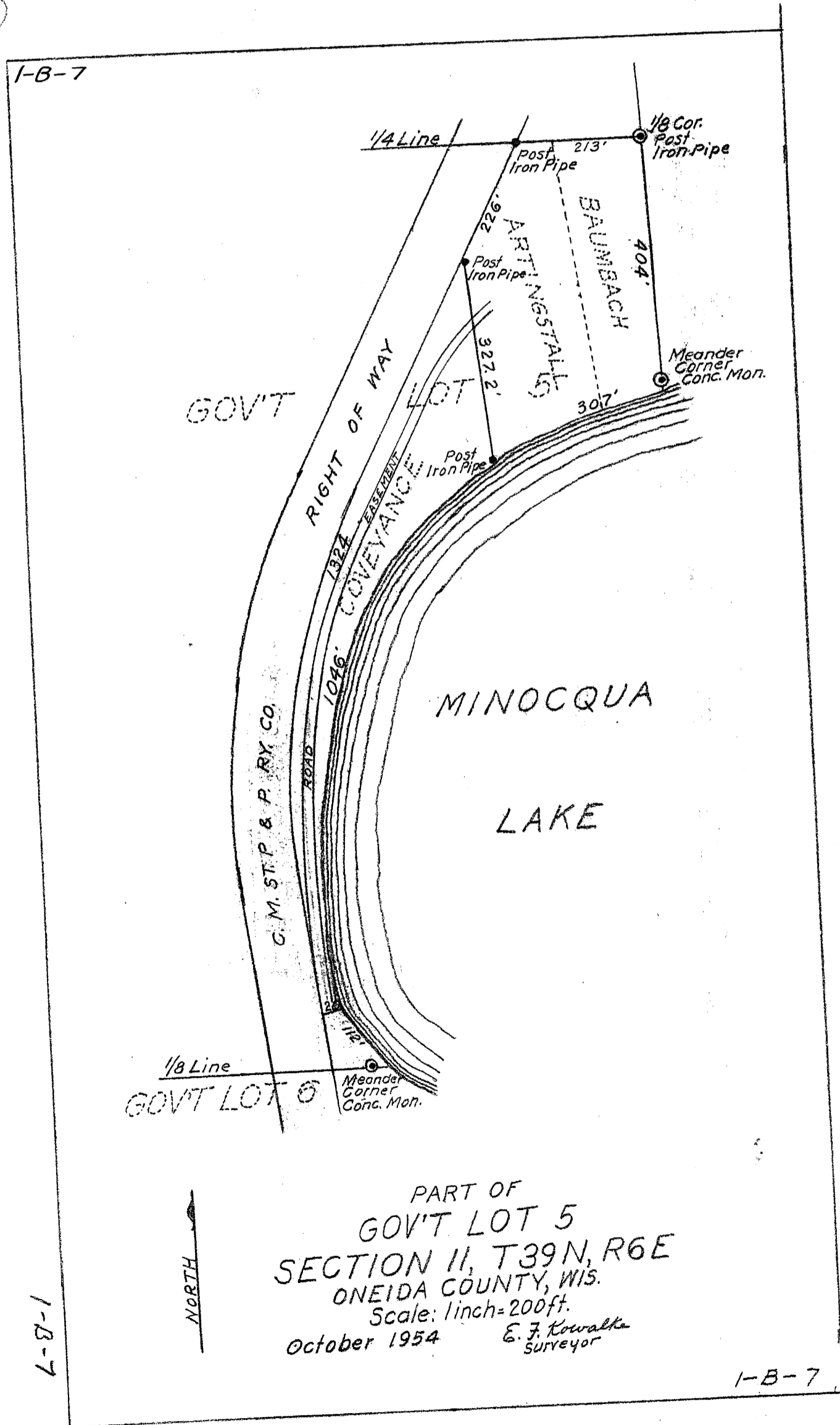


A1663

| | |
|------------------------------|--------------------|
| MAP # | A1663 |
| DATE FILED | OCT. 31. 1955 |
| BY | <i>[Signature]</i> |
| DESCRIPTION FILED | |
| ONEIDA CO. SURVEYOR'S OFFICE | |

(2)



PART OF
 GOVT LOT 5
 SECTION II, T39N, R6E
 ONEIDA COUNTY, WIS.
 Scale: 1 inch = 200 ft.
 October 1954 E. J. Kowalko
 Surveyor

1-B-7

1-B-7

A1663

A1663