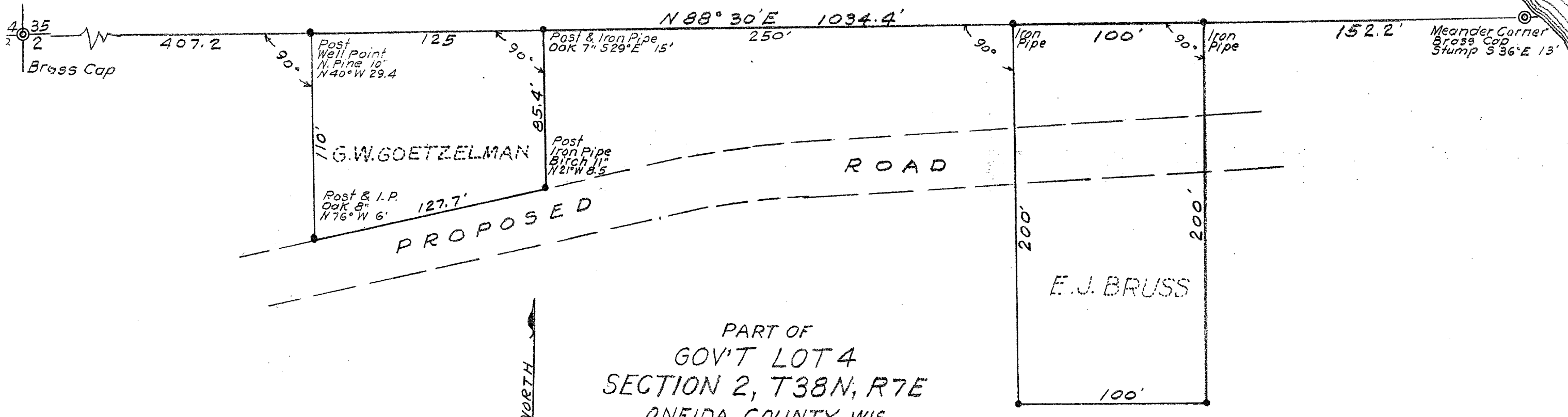
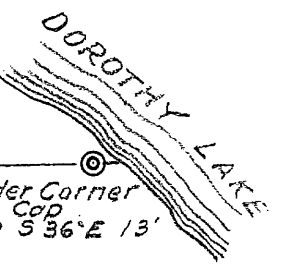


A 1664



PART OF
 GOV'T LOT 4
 SECTION 2, T38N, R7E
 ONEIDA COUNTY, WIS.

Scale: 1 inch = 50 feet
 May 1955
Lloyd Scott
 Surveyor

1-13-10

MAP #	A 1664
DATE FILED	OCT 31 2005
DESCRIPTION FILED	
BY	<i>R</i>
ONEIDA CO. SURVEYOR'S OFFICE	

A 1664

A 1664