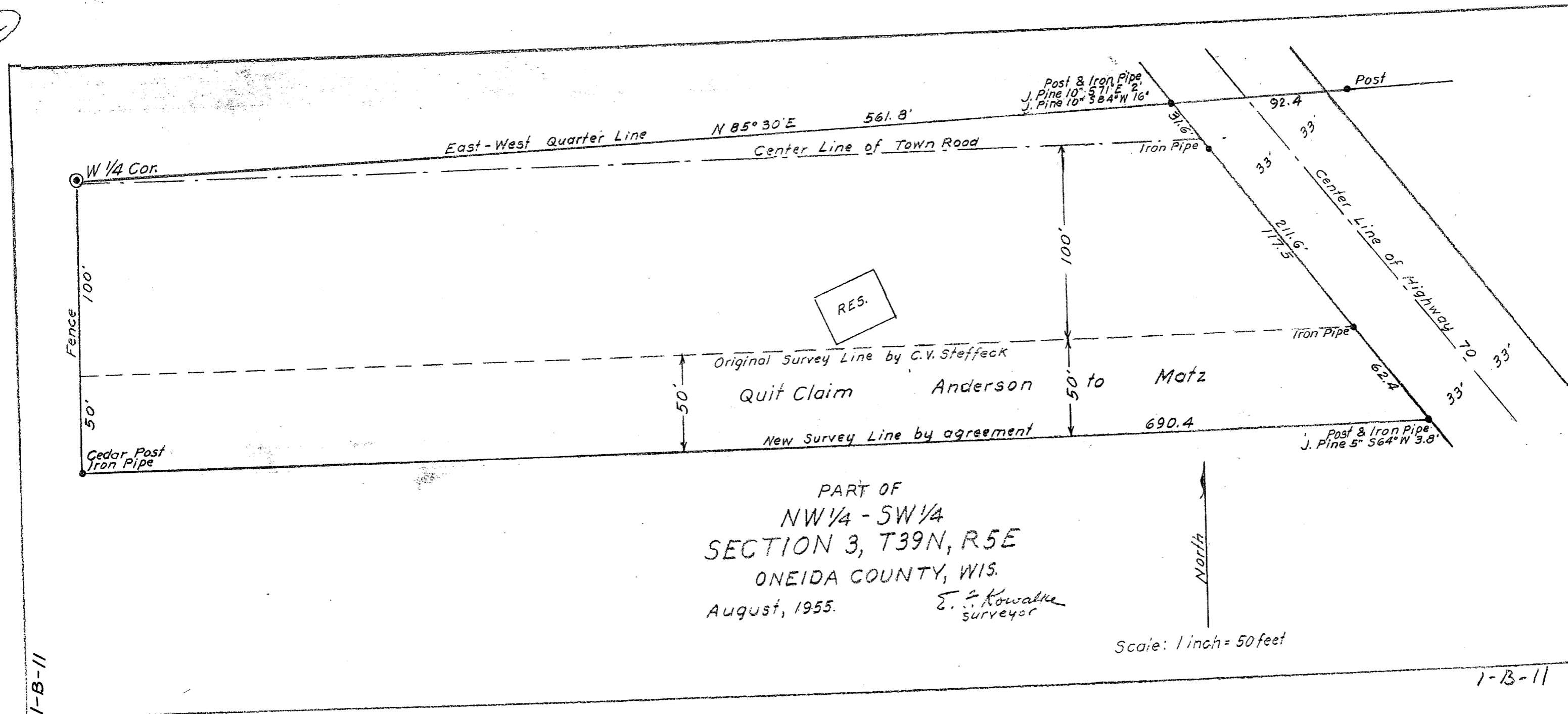


MAP # A 1665  
 DATE FILED... OCT. 31. 2005...  
 BY...  
 DESCRIPTION FILED...  
 ONEIDA CO. SURVEYOR'S OFFICE



PART OF  
 NW 1/4 - SW 1/4  
 SECTION 3, T39N, R5E  
 ONEIDA COUNTY, WIS.  
 August, 1955. E. J. Kowalke  
 surveyor

Scale: 1 inch = 50 feet

A 1665

A 1665

1-B-11 A 1665