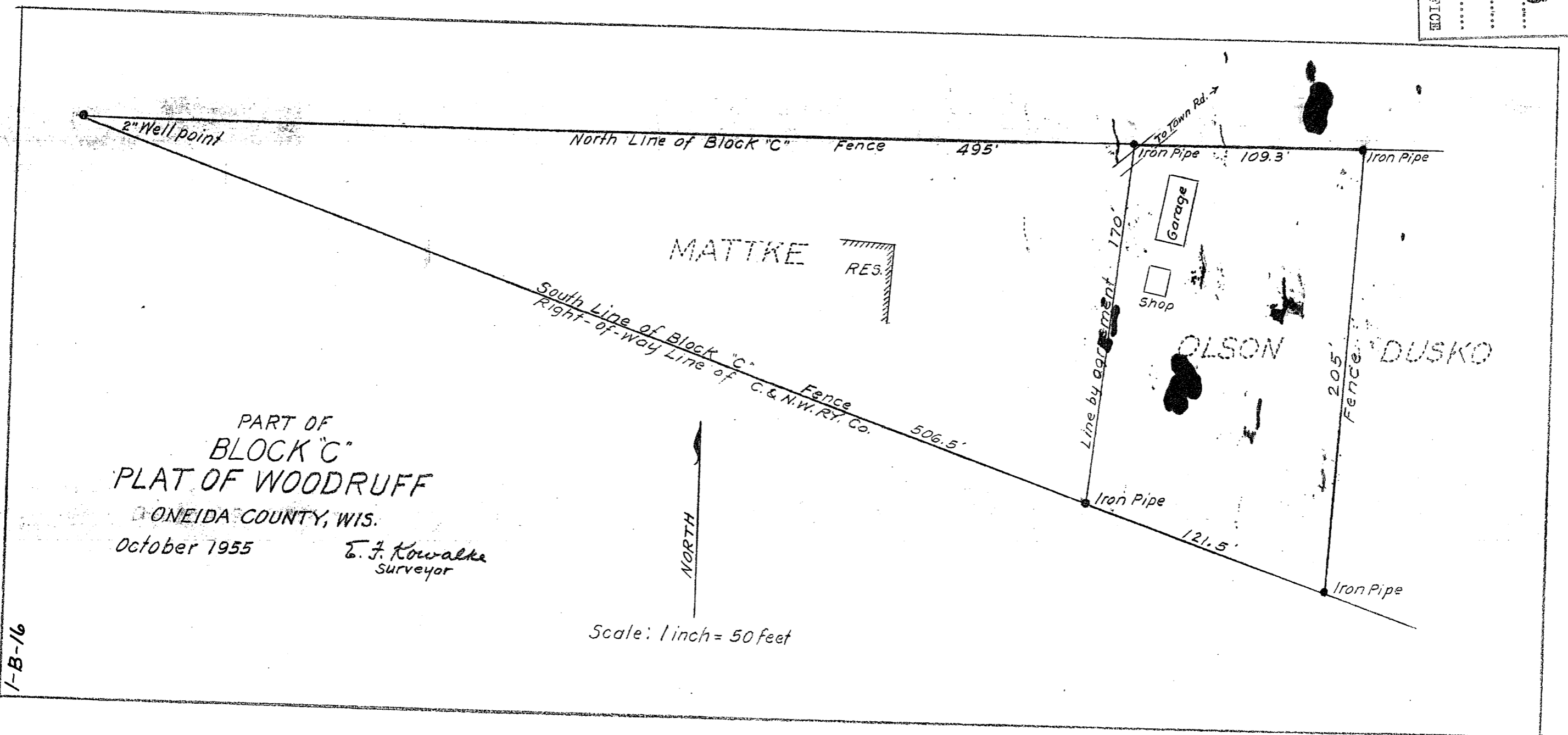


MAP # A 1668
 DATE FILED OCT 31 1955
 BY
 DESCRIPTION FILED
 ONEIDA CO. SURVEYOR'S OFFICE

3



PART OF
 BLOCK "C"
 PLAT OF WOODRUFF
 ONEIDA COUNTY, WIS.
 October 1955
 E. J. Kowalke
 Surveyor

1-B-16

1-B-16
 2-39-6
 NW 1/4 of the NE 1/4

A 1668

A 1668

A 1668