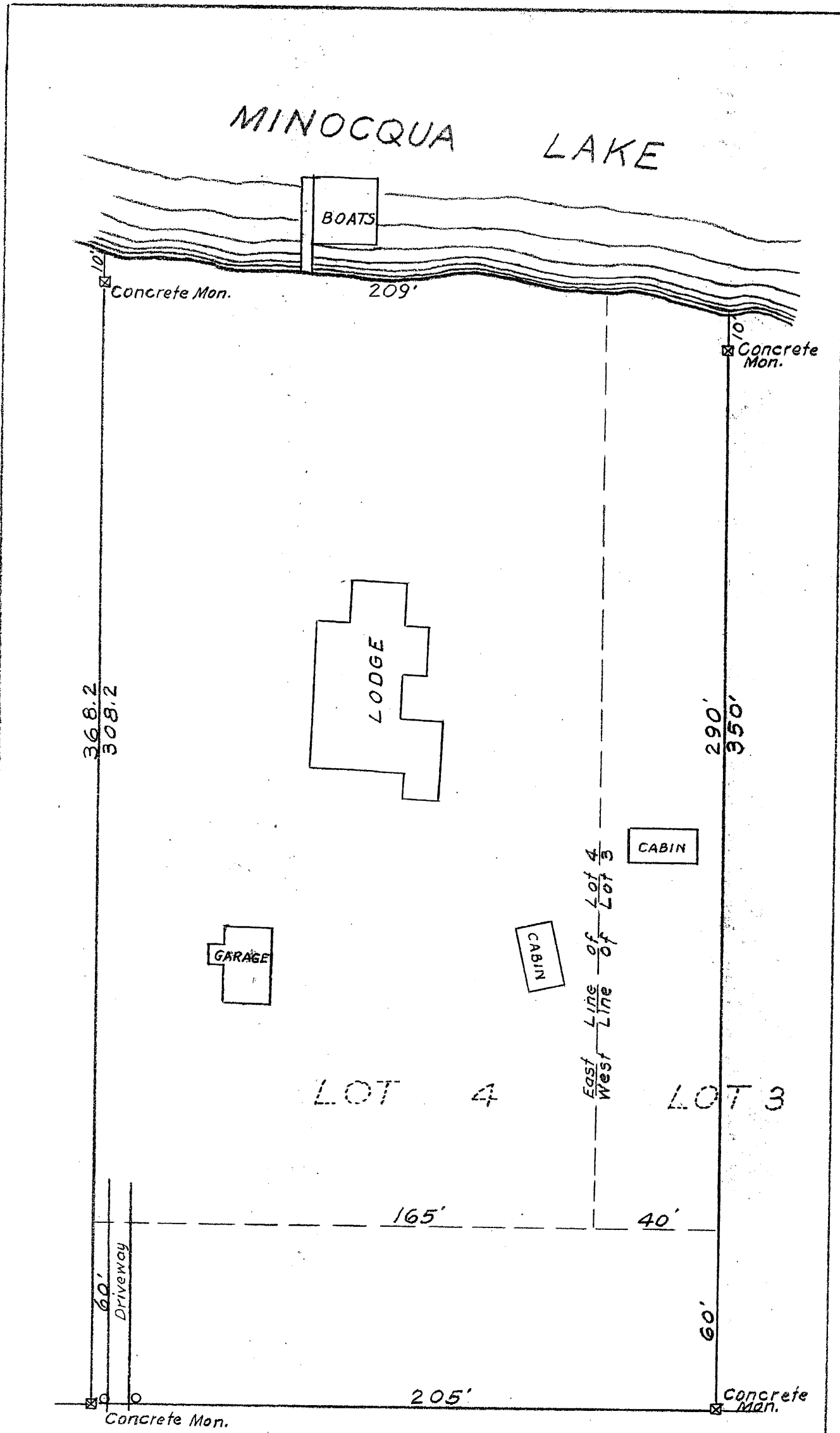


A1670

4

MAP # A1670
 DATE FILED OCT. 31. 2005
 BY *[Signature]*
 DESCRIPTION FILED
 ONEIDA CO. SURVEYOR'S OFFICE



← TO MINOCQUA COUNTRY CLUB ROAD

PART OF
 — LAKE VIEW PARK —
 SECTION 14, T39N, R6E
 ONEIDA COUNTY, WIS.

August, 1956

E. F. Kowalke
surveyor



A1670

I-B-20

A1670