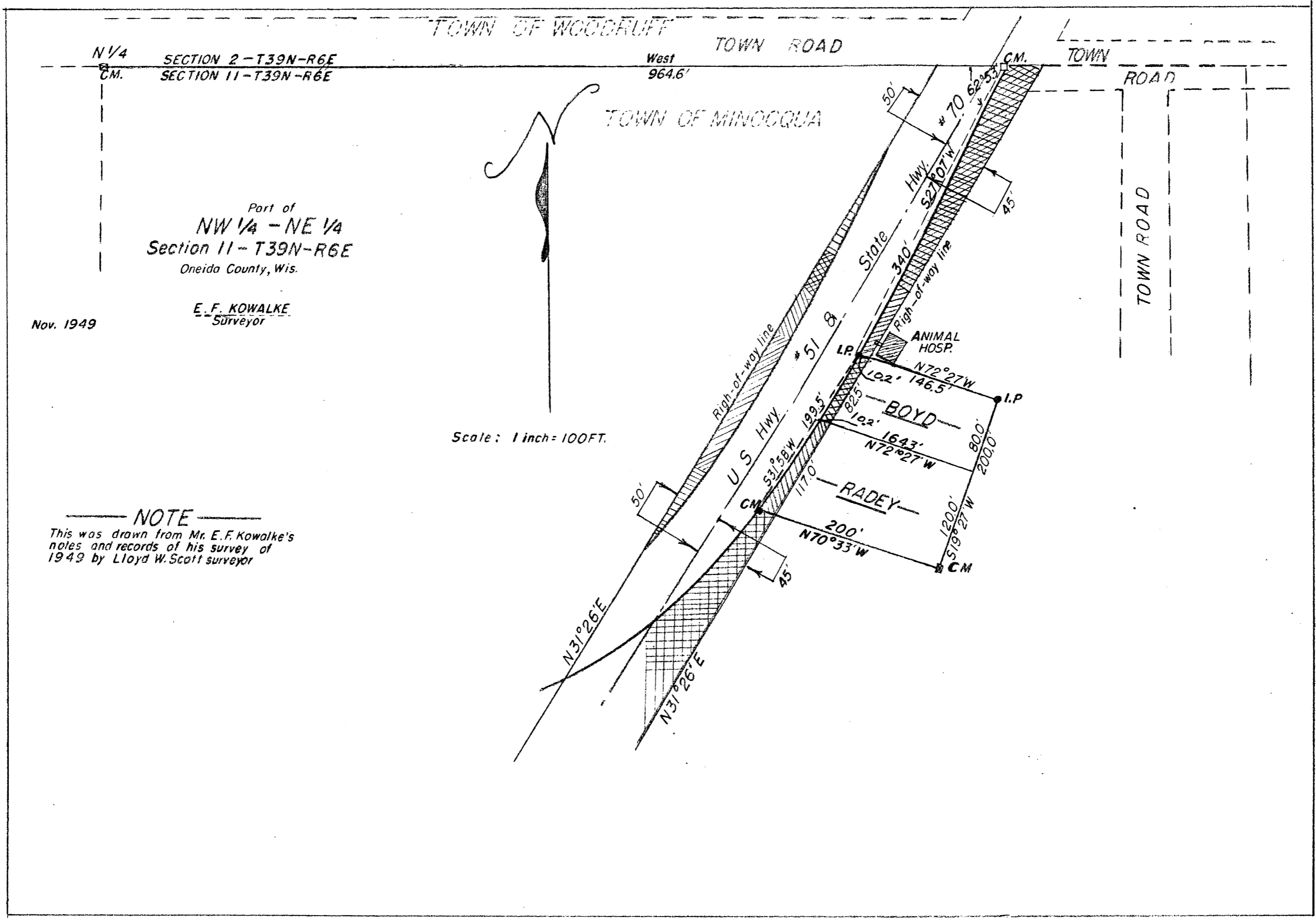


A 1676

A 1676



Part of
 NW 1/4 - NE 1/4
 Section 11 - T39N-R6E
 Oneida County, Wis.

E. F. KOWALKE
 Surveyor

Nov. 1949

Scale: 1 inch = 100 FT.

NOTE
 This was drawn from Mr. E. F. Kowalke's
 notes and records of his survey of
 1949 by Lloyd W. Scott surveyor

MAP # A 1676
 DATE FILED NOV 03 2005
 DESCRIPTION FILED
 ONEIDA CO. SURVEYOR'S OFFICE

A 1676

1-B-55