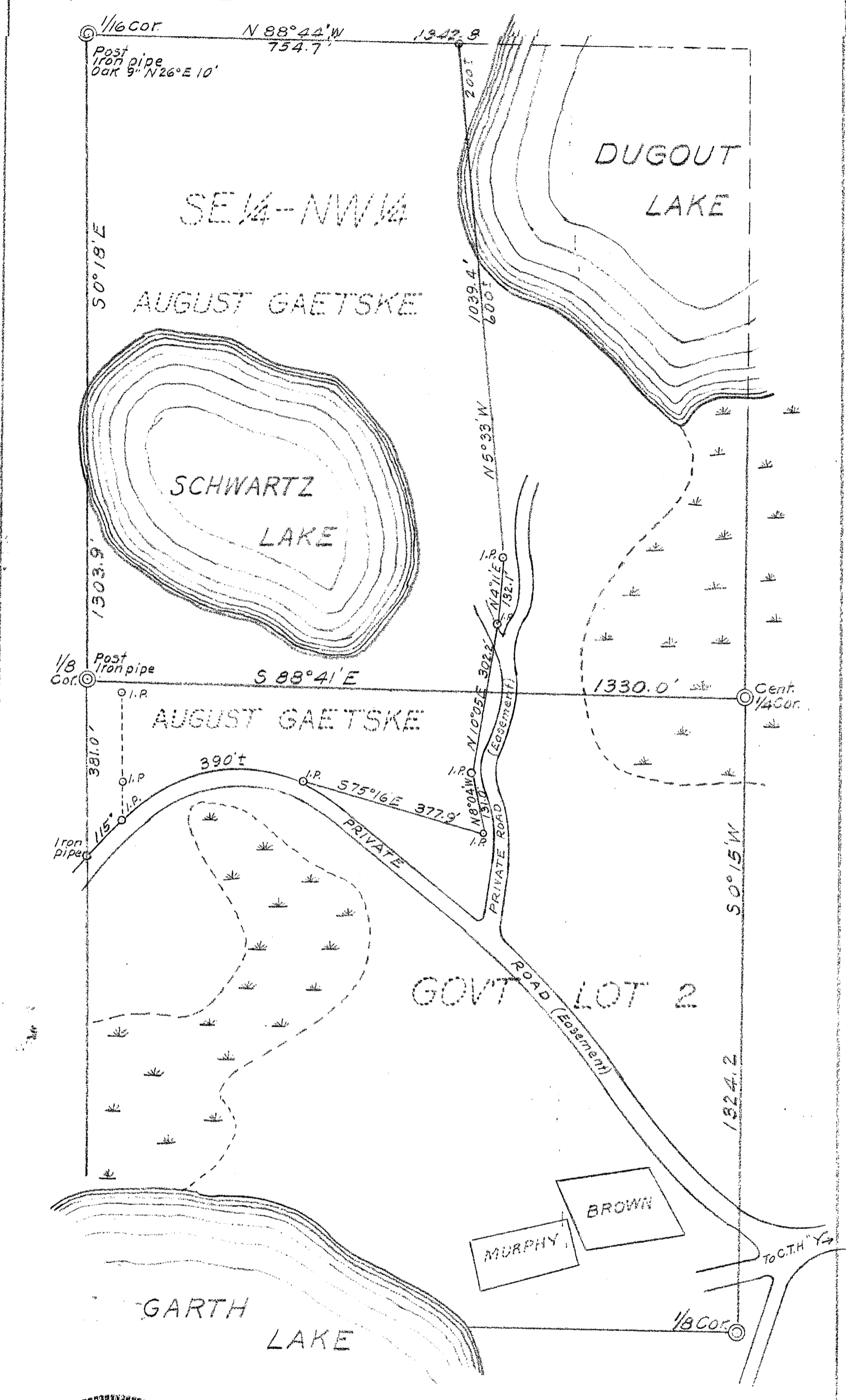


MAP # **A1678**
 DATE FILED **NOV 04 2005**
 BY *R*
 DESCRIPTION FIELD
 ONEIDA CO. SURVEYOR'S OFFICE

A1678



PART OF
 SECTION 21, T38N, R6E
 ONEIDA COUNTY, WIS
 December 15, 1956

E. F. Kowalke
 Surveyor

Scale
 1" = 200 feet

1-B-25

1-B-25
 8291A

A1678