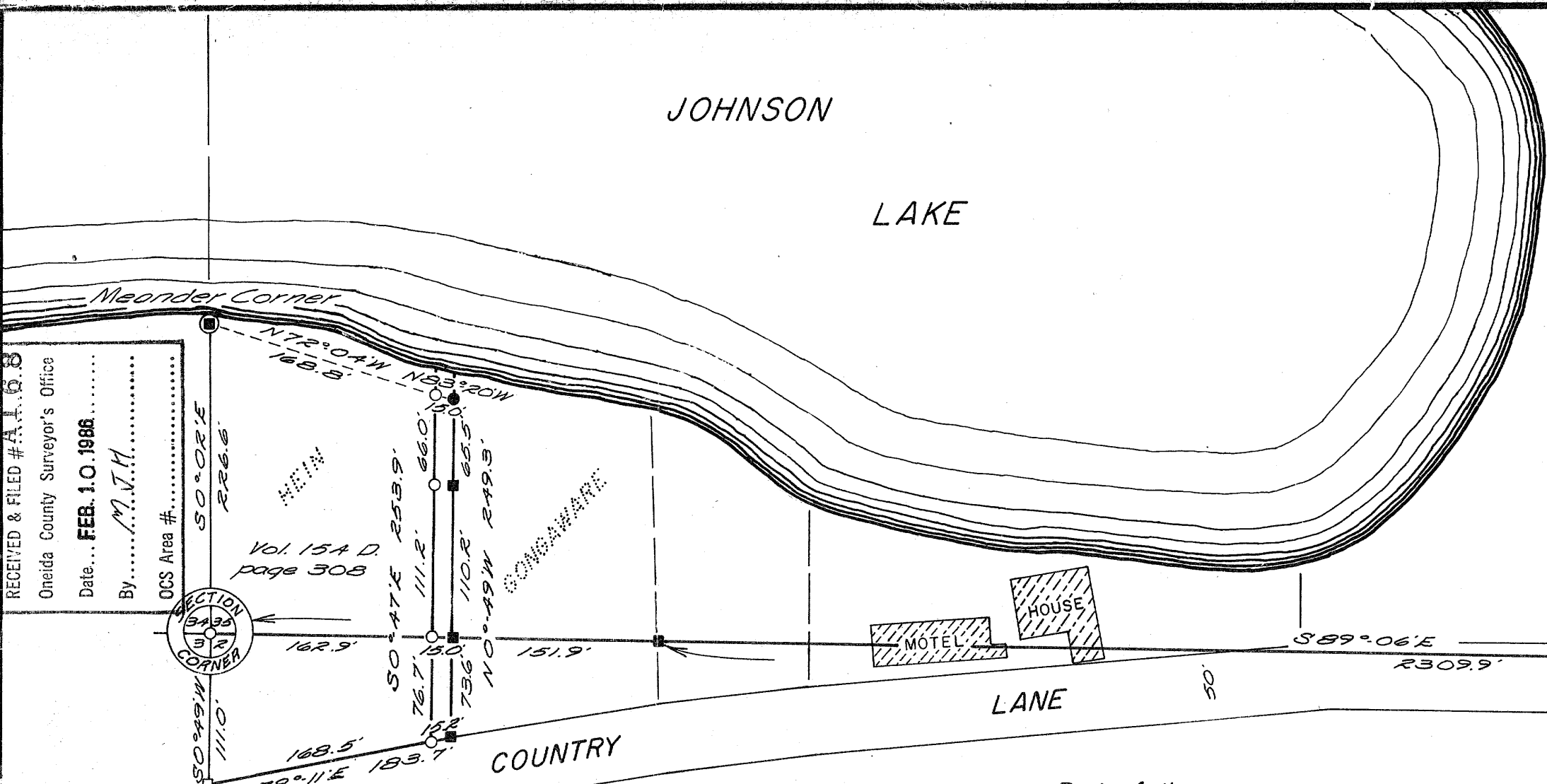


157

- = Iron pipe found in place.
- = Concrete monument found in place.
- = 3"X5" stone found in place.
- = Iron pipe set.

RECEIVED & FILED #A168
 Oneida County Surveyor's Office
 Date... FEB. 10. 1986
 By... M.J.H.



14' 00k
 N 5° E, 70.6'
 12" 00k
 S 8° E, 61.7'



Bearings Magnetic

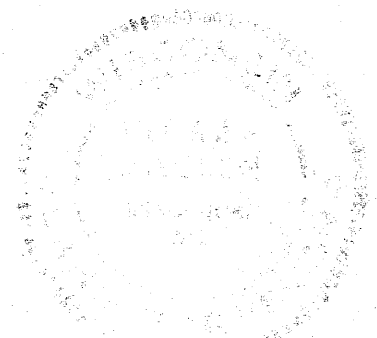
Part of the
**NW FRACTIONAL 1/4
 SECTION 2, T39N, R6E**
 Oneida County, Wis.
 and part of
**GOV'T LOT 3
 SECTION 35, T40N, R6E**
 Vilas County, Wis.

A168

~~HERBERT MOORE~~
 County Surveyor
 Oneida County, Wisconsin
 Courthouse
 Rhinelander, Wisconsin 54501
 DEC. 13 1971

Scale 1"=100'

July, 1971



Northwoods Surveyors Inc.

William S. Cameron
 Land Surveyor

157