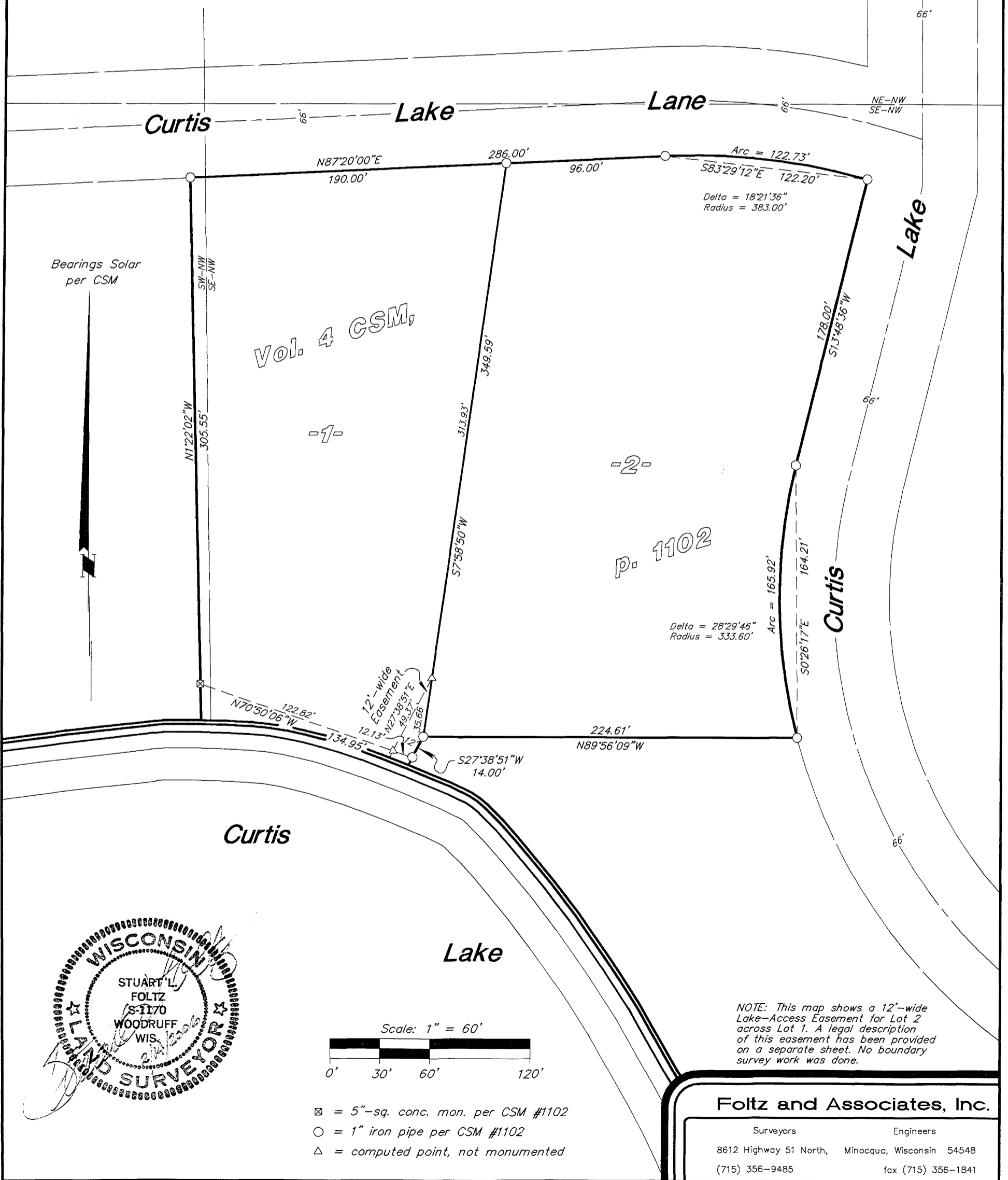
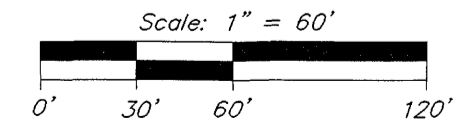


EASEMENT SURVEY
 over
LOT 1
 of
Vol. 4 Certified Survey Maps, p. 1102
 Being part of the
SE1/4 of the NW1/4
 and part of the
SW1/4 of the NW1/4
SECTION 8, T39N, R6E
 Town of Minocqua
 Oneida County, Wisconsin

MAP # **A1724**
 DATE FILED **FEB. 27 2006**
 BY *JK*
 DESCRIPTION FILED
 ONEIDA CO. SURVEYOR'S OFFICE



WISCONSIN
 LAND SURVEYOR
 STUART L. FOLTZ
 S-1170
 WOODRUFF
 WIS.
Stuart L. Foltz



- ⊠ = 5"-sq. conc. man. per CSM #1102
- = 1" iron pipe per CSM #1102
- △ = computed point, not monumented

Foltz and Associates, Inc.

Surveyors Engineers
 8612 Highway 51 North, Minocqua, Wisconsin 54548
 (715) 356-9485 fax (715) 356-1841