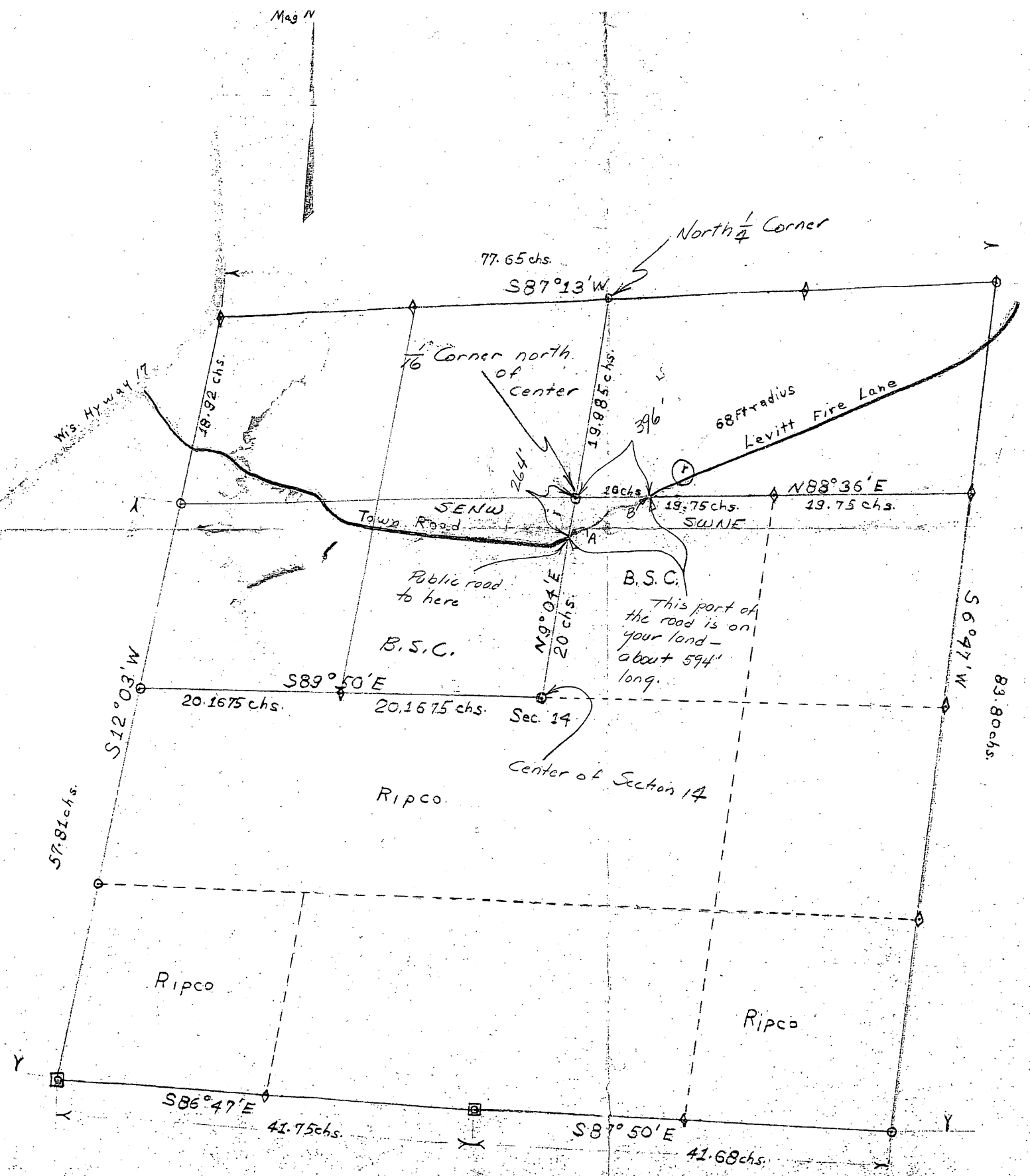


Resurvey Sec 14 T31N R9E



Key To Corners & Lines

- Old corners - origin unknown
- ◻ Old corners replaced by Ripco iron pipes with brass caps
- ◆ Corners set by Ripco surveyor
- Lines run by transit in field
- - - Approx. lines by scale

1/10th inch = 1 chain 12-24-55 N.J.L.

MAP # A1746
 DATE FILED MAY 12 2006
 BY... RA
 DESCRIPTION FILED
 ONEIDA CO. SURVEYOR'S OFFICE