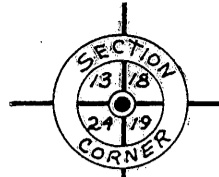


Part of
Gov't Lot 1
Section 24, T38N, R5E
 Town of Minocqua
 Oneida County, Wisconsin



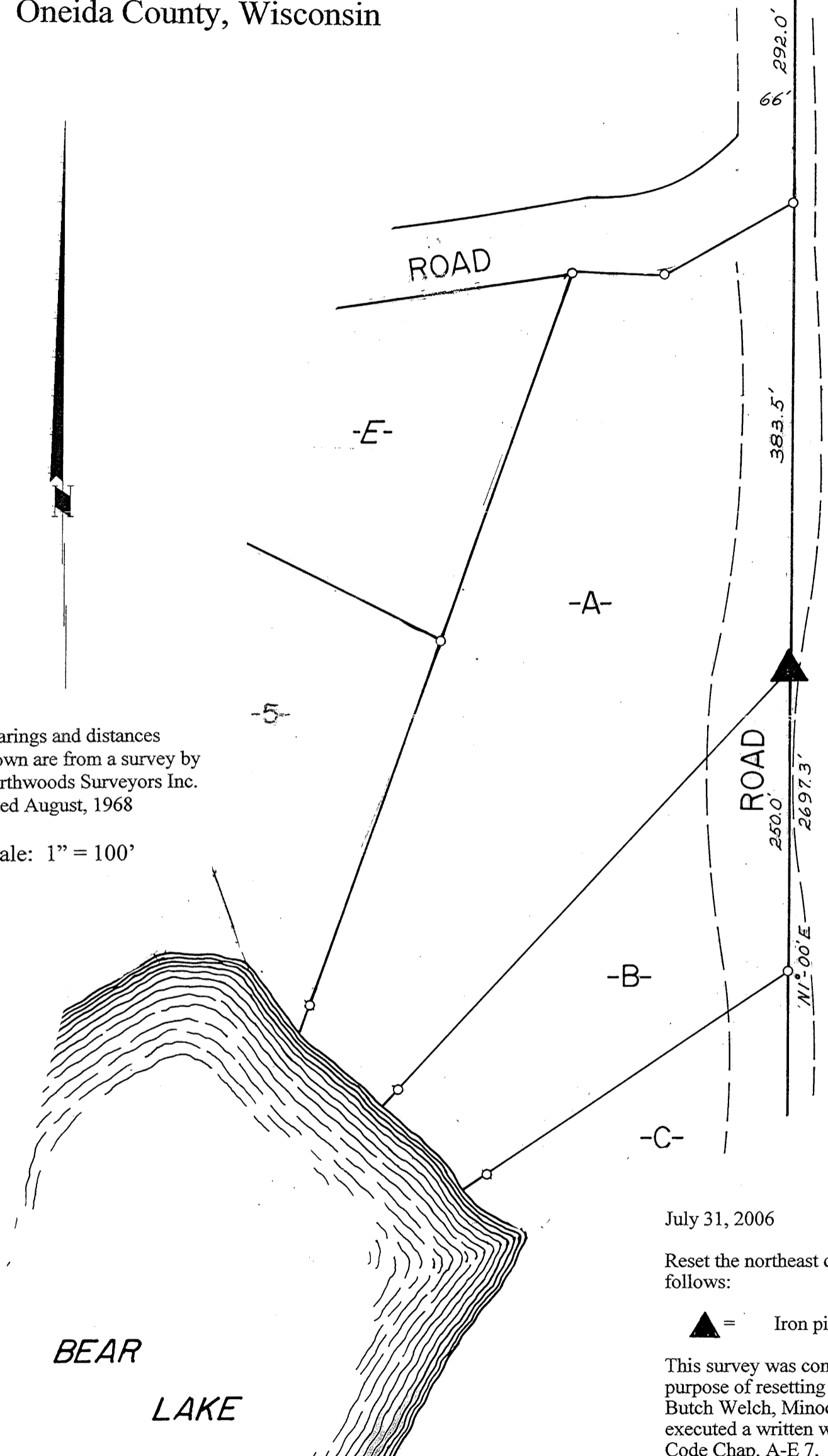
14" N. Pine N 79° E 64.9'
 6" N. Pine S 39° E 50.7'

MAP # **A1783**
 DATE FILED **AUG 23 2006**
 BY *[Signature]*
 DESCRIPTION FILED
 ONEIDA CO. SURVEYOR'S OFFICE

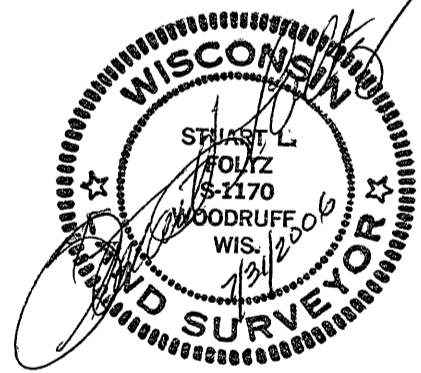


Bearings and distances shown are from a survey by Northwoods Surveyors Inc. dated August, 1968

Scale: 1" = 100'



BEAR LAKE



July 31, 2006

Reset the northeast corner of Lot B per record distances, as follows:

▲ = Iron pipe set

This survey was completed by Foltz and Associates, Inc. for the purpose of resetting the northeast corner of Lot B by order of Butch Welch, Minocqua Superintendent of Public Works, who has executed a written waiver for all other requirements of Wis. Adm. Code Chap. A-E 7. A closed traverse was not made and the minimum accuracy is 1 part in 100 and plus or minus 2°.