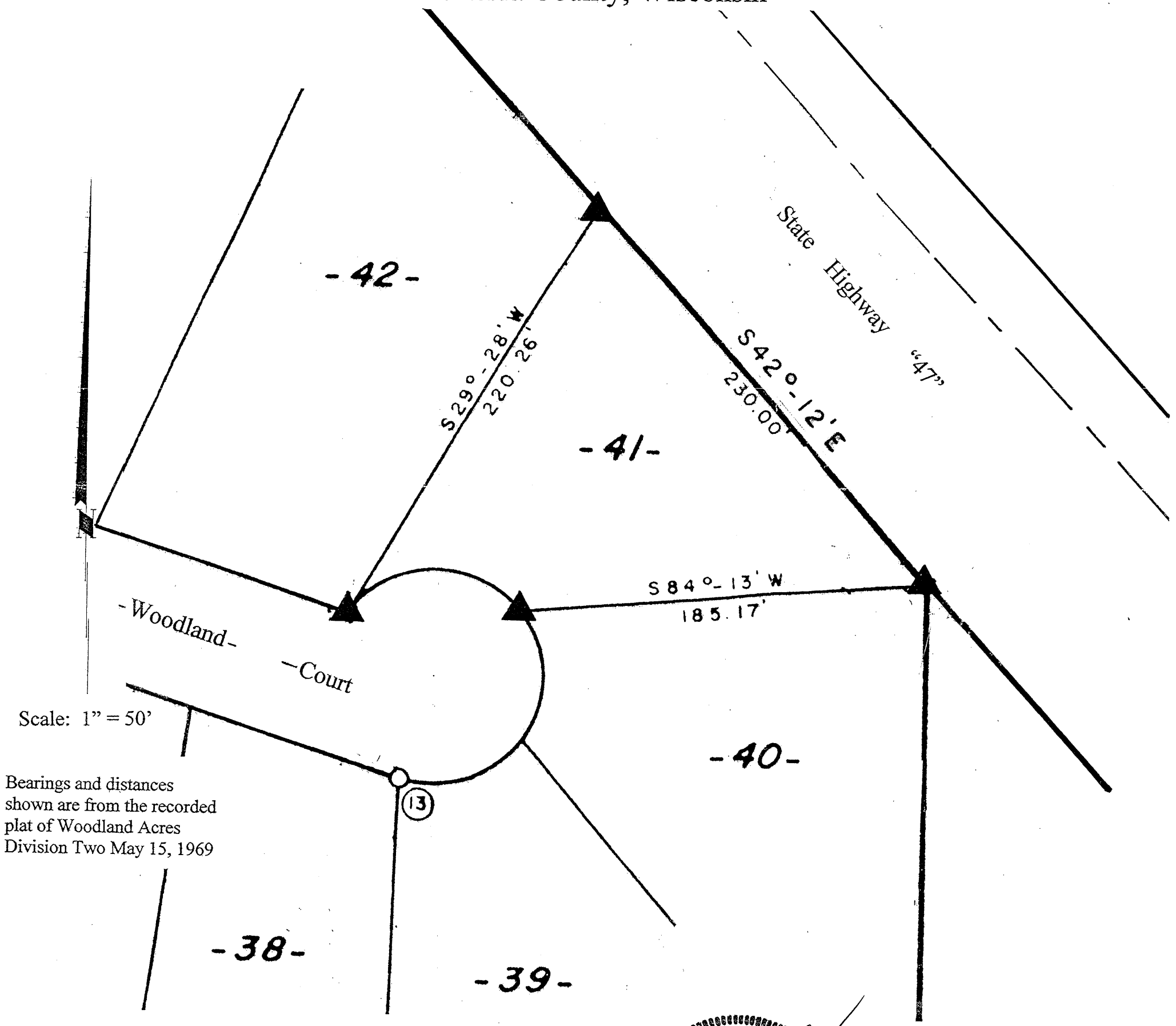


MAP # **A1784**
 DATE FILED **AUG 23 2006**
 BY *[Signature]*
 DESCRIPTION FILED
 ONEIDA CO. SURVEYOR'S OFFICE

Lot 41
 of
Woodland Acres Division Two
 in the
NE¹/₄ of the SE¹/₄
Section 29, T39N, R7E
 Town of Woodruff
 Oneida County, Wisconsin



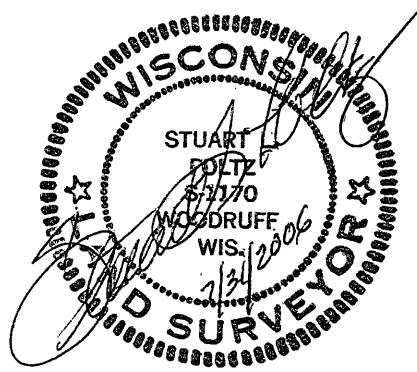
Bearings and distances shown are from the recorded plat of Woodland Acres Division Two May 15, 1969

July 31, 2006

Recovered, verified, and marked monuments at the corners of Lot 41 of Woodland Acres Division 2, as follows:

▲ = Iron monument found in place

This survey was completed by Foltz and Associates, Inc. for the purpose of locating existing lot corners of Lot 41 by the order of William J. Yeschek, who has executed a written waiver for all other requirements of Wis. Adm. Code Chap. A-E 7. A closed traverse was not made and the minimum accuracy is 1 part in 100 and plus or minus 2°.



Foltz and Associates, Inc.

Surveyors	Engineers
8612 Highway 51 North, Minocqua, Wisconsin 54548	
(715) 356-9485	fax (715) 356-1841