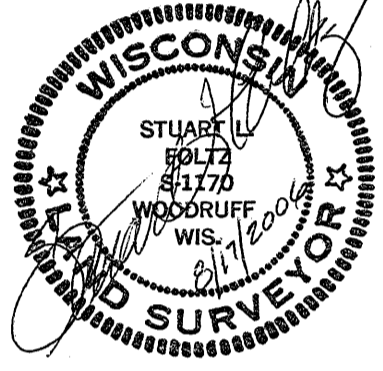
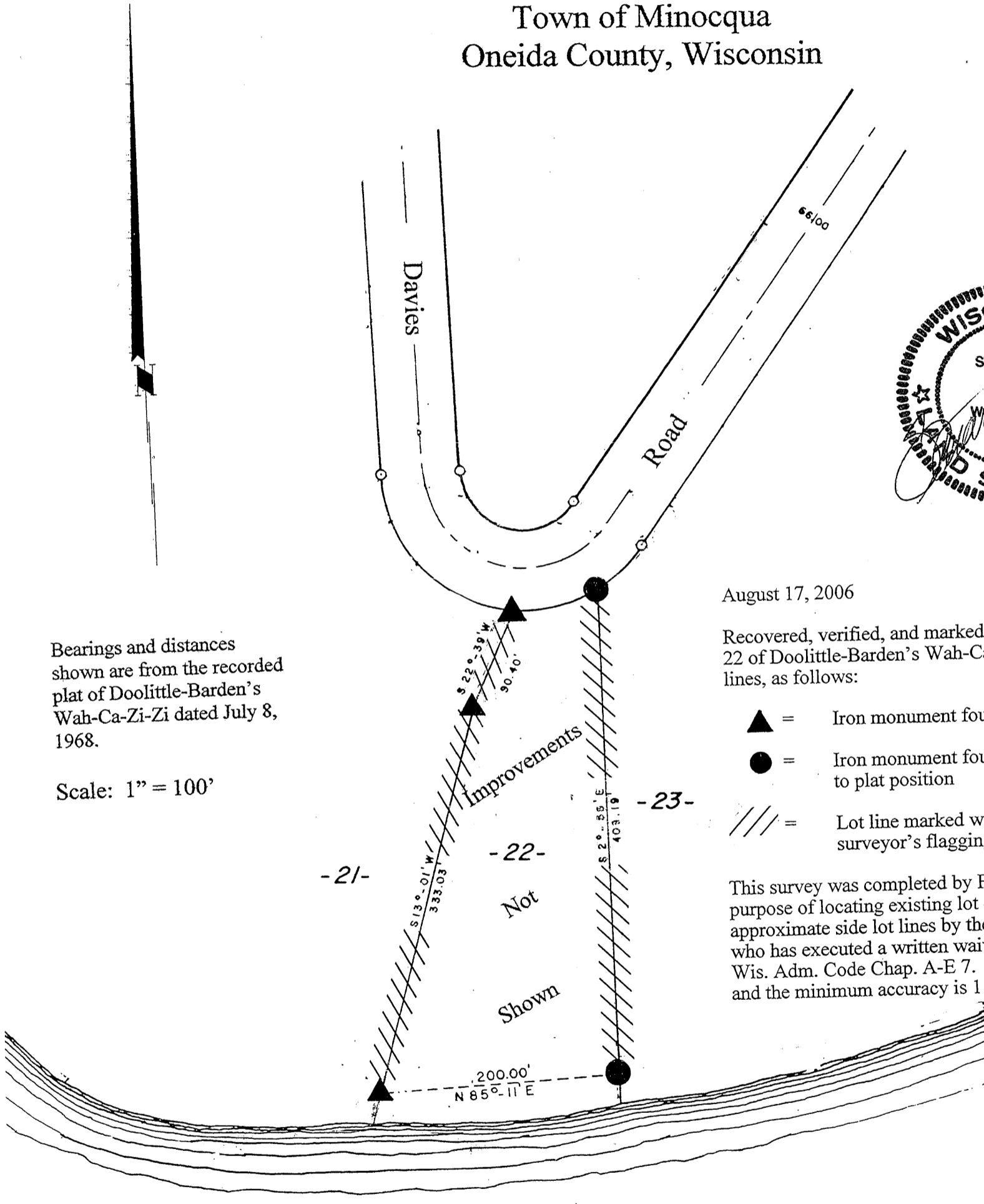


MAP # **A1785**
 DATE FILED **AUG 23 2006**
 BY *JL*
 DESCRIPTION FILED
 ONEIDA CO. SURVEYOR'S OFFICE

Lot 22
 of
Doolittle-Barden's
Wah-Ca-Zi-Zi
 in
Gov't. Lots 2 & 3
Section 25, T39N, R6E
 Town of Minocqua
 Oneida County, Wisconsin



August 17, 2006

Recovered, verified, and marked monuments at the corners of Lot 22 of Doolittle-Barden's Wah-Ca-Zi-Zi and marked the side lot lines, as follows:

- ▲ = Iron monument found in place
- = Iron monument found and corrected to plat position
- //// = Lot line marked with pink surveyor's flagging ribbon

This survey was completed by Foltz and Associates, Inc. for the purpose of locating existing lot corners of Lot 22 and marked the approximate side lot lines by the order of the Mrs. Dale Woodall, who has executed a written waiver for all other requirements of Wis. Adm. Code Chap. A-E 7. A closed traverse was not made and the minimum accuracy is 1 part in 100 and plus or minus 2°.

Bearings and distances shown are from the recorded plat of Doolittle-Barden's Wah-Ca-Zi-Zi dated July 8, 1968.

Scale: 1" = 100'

Tomahawk
Lake

Foltz and Associates, Inc.
 Surveyors Engineers
 8612 Highway 51 North, Minocqua, Wisconsin 54548
 (715) 356-9485 fax (715) 356-1841