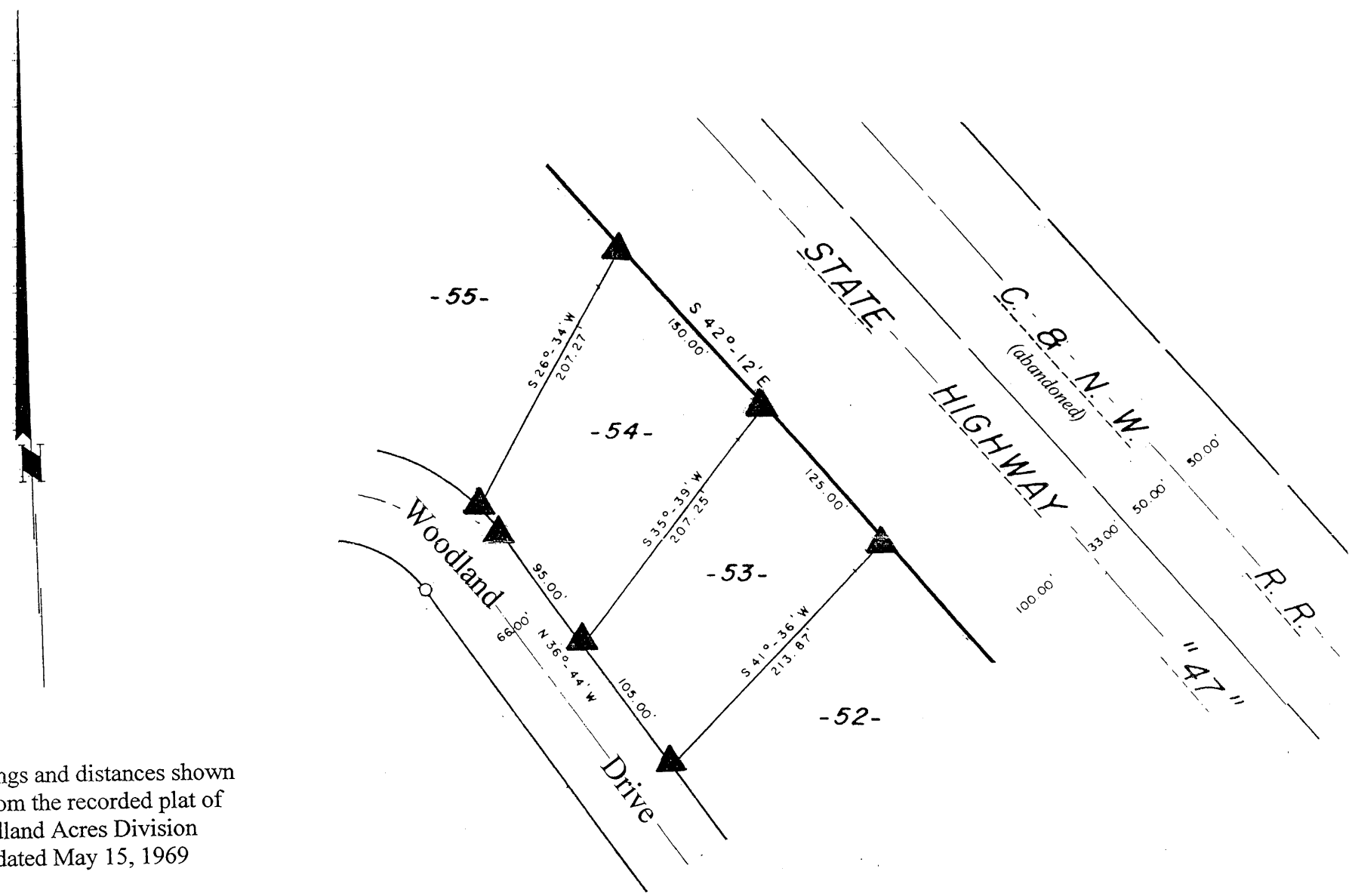


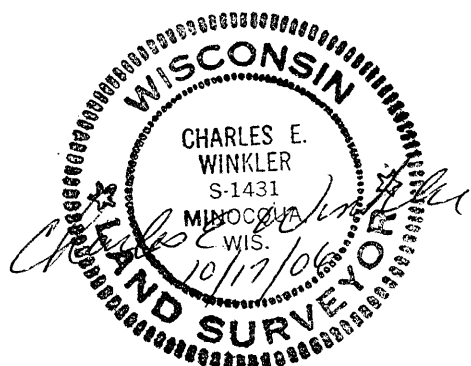
MAP # 1827
 DATE FILED NOV 17 2006
 BY *fl*
 DESCRIPTION FILED
 ONEIDA CO. SURVEYOR'S OFFICE

Lots 53 & 54
 of
Woodland Acres Division Two
 in the
SE¹/₄ of the NE¹/₄
Section 29, T39N, R7E
 Town of Woodruff
 Oneida County, Wisconsin



Bearings and distances shown are from the recorded plat of Woodland Acres Division Two dated May 15, 1969

Scale: 1" = 100'



October 17, 2006

Recovered, verified, and marked monuments at the corners of Lots 53 and 54 of Woodland Acres Division Two, as follows:

▲ = Iron monument found in place

This survey was completed by Foltz and Associates, Inc. for the purpose of locating existing lot corners of Lots 53 and 54 by the order of Bill Jensch, agent for Harry S. Anderson, who has executed a written waiver for all other requirements of Wis. Adm. Code Chap. A-E 7.

Foltz and Associates, Inc.

Surveyors	Engineers
8612 Highway 51 North, (715) 356-9485	Minocqua, Wisconsin 54548 fax (715) 356-1841