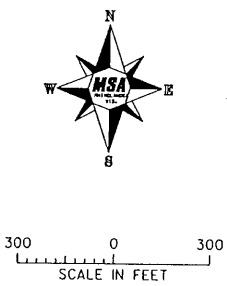
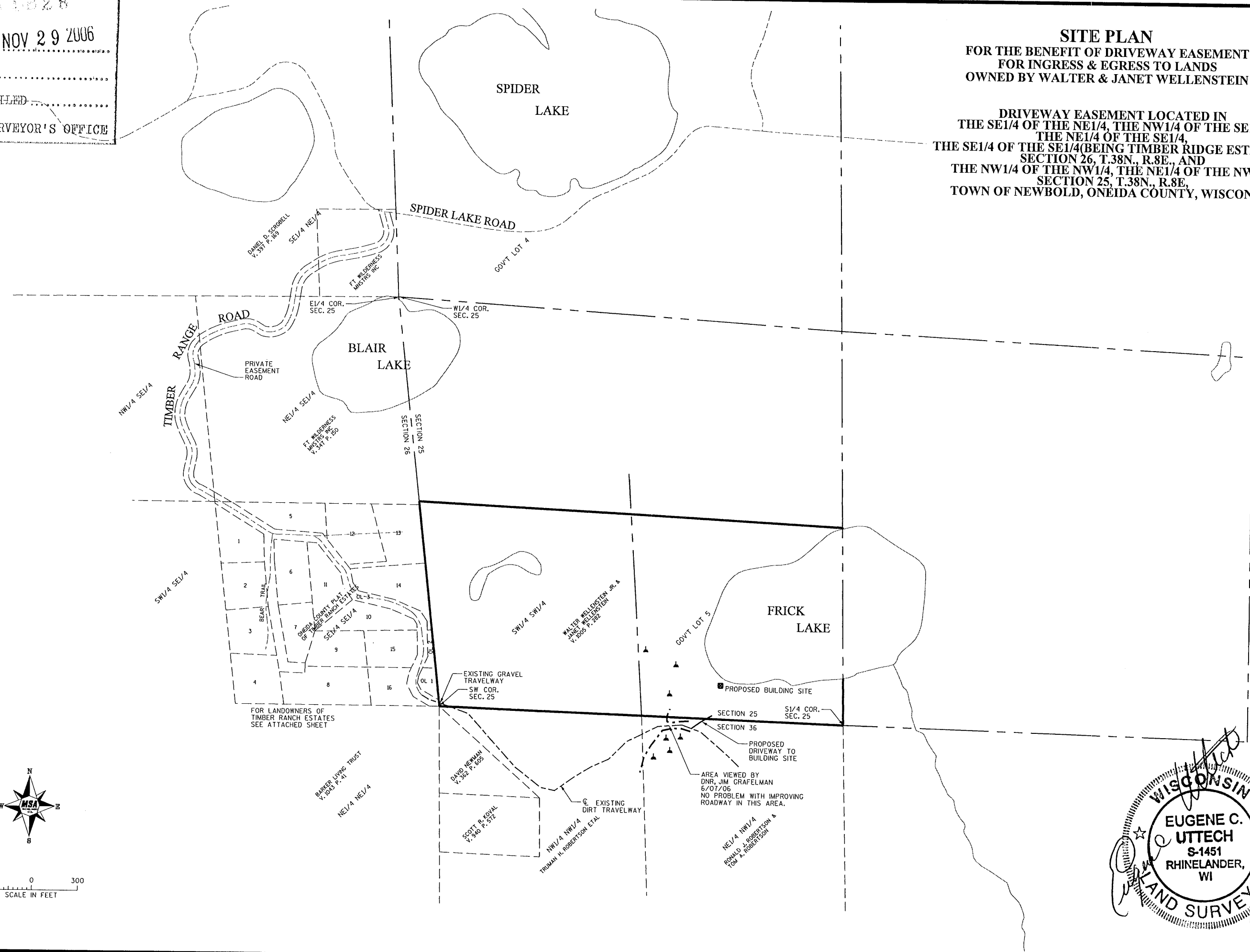


MAP
 DATE FILED NOV 29 2006
 BY
 DESCRIPTION FILED
 ONEIDA CO. SURVEYOR'S OFFICE

SITE PLAN
 FOR THE BENEFIT OF DRIVEWAY EASEMENT
 FOR INGRESS & EGRESS TO LANDS
 OWNED BY WALTER & JANET WELLENSTEIN

DRIVEWAY EASEMENT LOCATED IN
 THE SE1/4 OF THE NE1/4, THE NW1/4 OF THE SE1/4,
 THE NE1/4 OF THE SE1/4,
 THE SE1/4 OF THE SE1/4 (BEING TIMBER RIDGE ESTATES),
 SECTION 26, T.38N., R.8E., AND
 THE NW1/4 OF THE NW1/4, THE NE1/4 OF THE NW1/4,
 SECTION 25, T.38N., R.8E.,
 TOWN OF NEWBOLD, ONEIDA COUNTY, WISCONSIN



WISCONSIN
 EUGENE C. UTTECH
 S-1451
 RHINELANDER, WI
 LAND SURVEYOR
 8/4/06

TRANSPORTATION - MUNICIPAL	BY	REVISION	NO.	DATE
DEVELOPMENT - ENVIRONMENTAL				
1833 N. Stevens St. Rhinelanders, WI 53081				
715-502-3344 1-800-444-7854 Fax: 715-502-4116				
© MSA PROFESSIONAL SERVICES				
MSA				
PROFESSIONAL SERVICES				
FILE # LABBY'S	DATE	DATE	DATE	DATE
PROJECT NO. 980651	DATE 6/06	SCALE AS SHOWN		
FILED	DATE	DATE	DATE	DATE
DOWN BY: CAR				
CHECKED BY: ECU				
FILE NO. 980651				
SHEET 1				