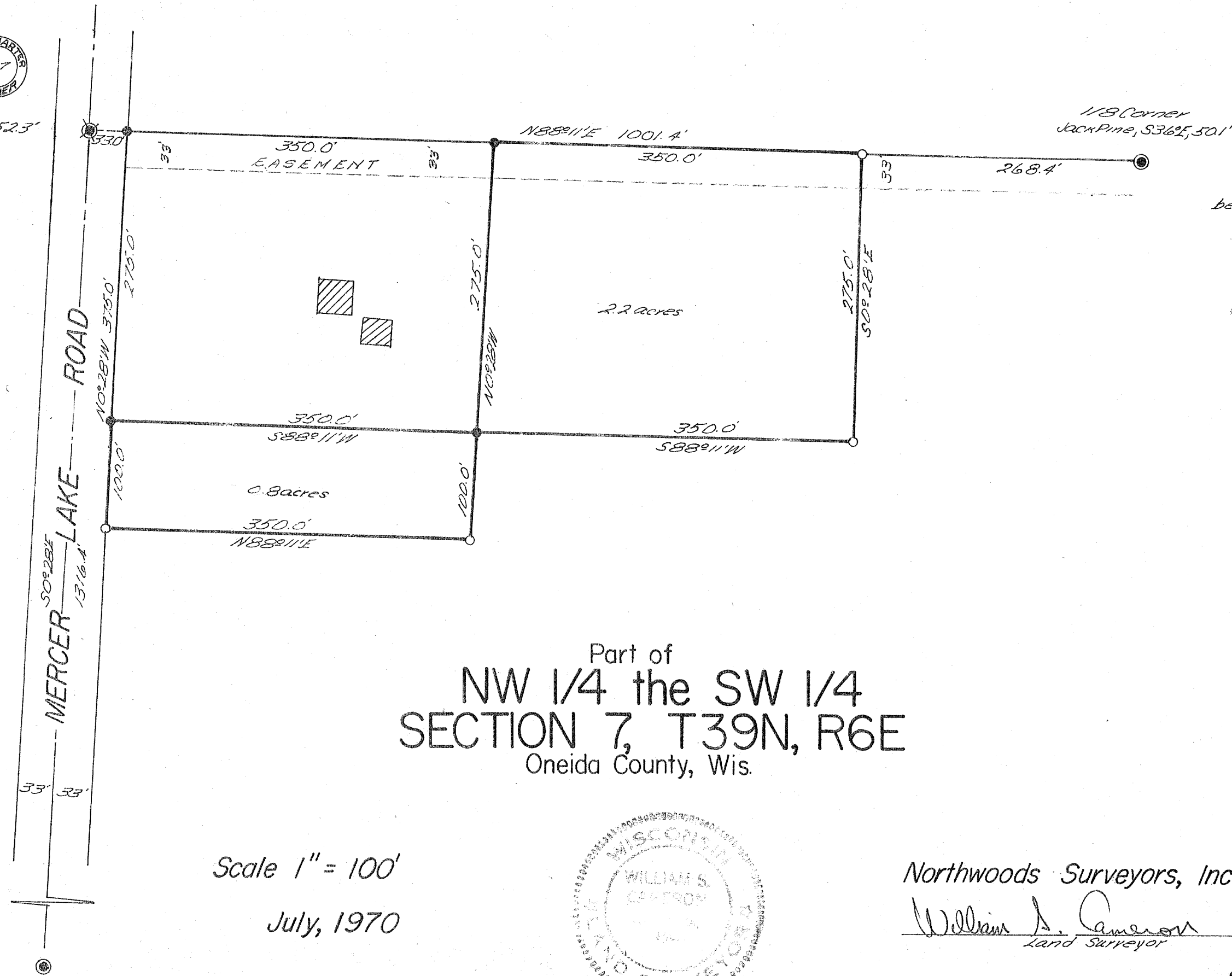


A184

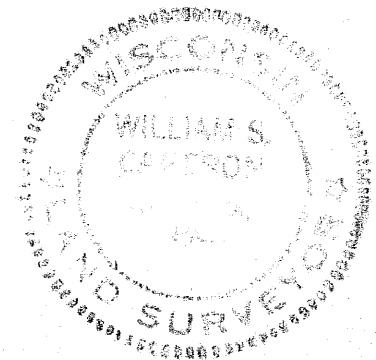


1/2" Jack Pine, S76°W, 52.3'



Part of
NW 1/4 the SW 1/4
SECTION 7, T39N, R6E
 Oneida County, Wis.

Scale 1" = 100'
 July, 1970



Northwoods Surveyors, Inc.
 William S. Cameron
 Land Surveyor

HERBERT MOORE
 County Surveyor
 Oneida County, Wisconsin
 Courthouse
 Rhinelander, Wisconsin 54501

RECEIVED & FILED # **A184**
 Oneida County Surveyor's Office
 Date: **FEB. 10 1986**
 By: **MTH**
 OCS Area #.....

- = iron pipe found in place
- = iron pipe set
- ✱ = cast iron plug found in place

APR 1 6 1973
 J. Laasch