

SURVEY OF ONEIDA LAKE BAY PLAT.

IN GOV. LOT 3, SECTION 5, TOWNSHIP 36 NORTH,
RANGE 7 EAST, ONEIDA COUNTY,
WISCONSIN.

MAP 8
DATE FILED
fe
DEC 21 2006

No. 159017

TO

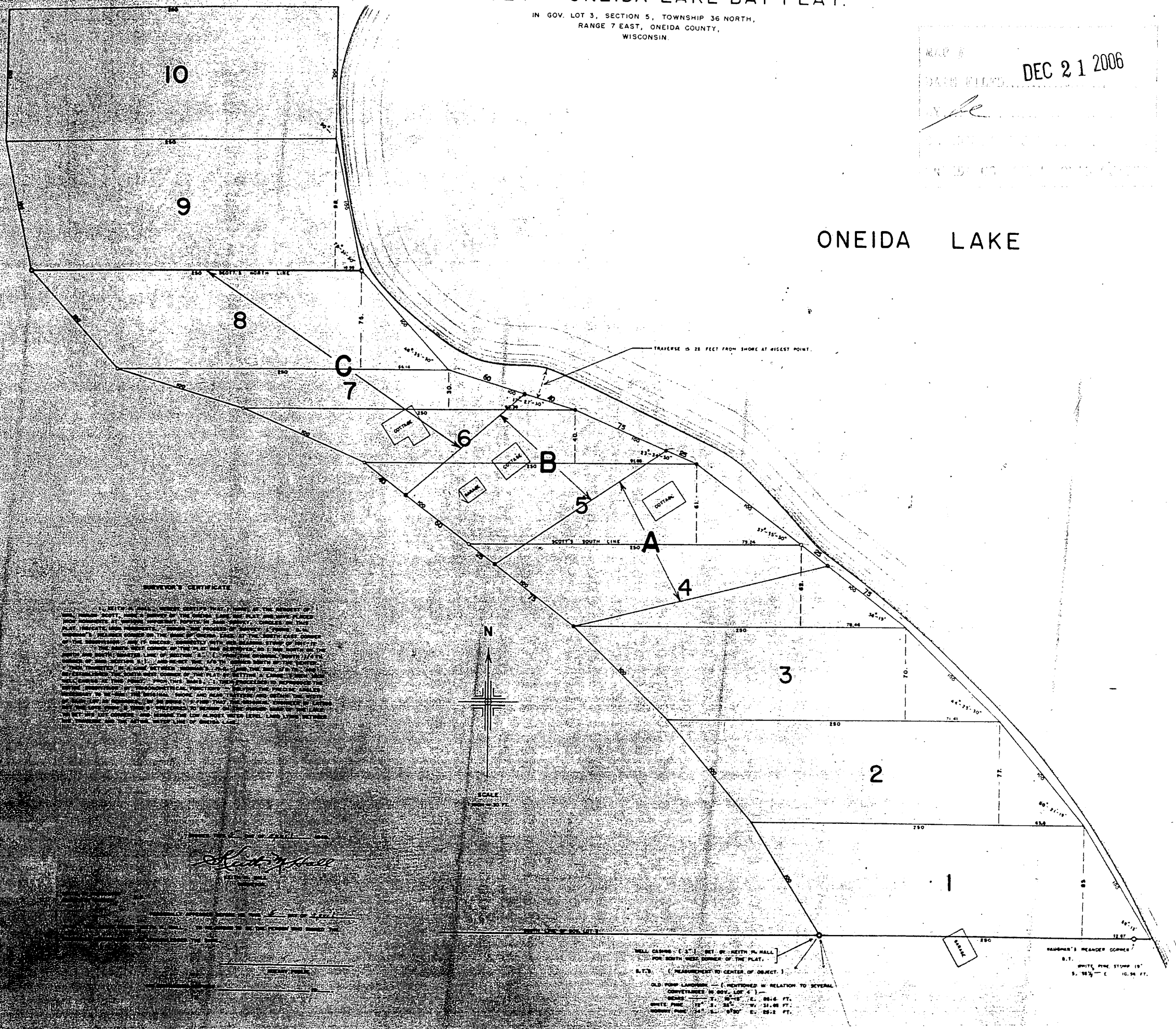
WARRANTY DEED

REGISTER'S OFFICE,
STATE OF WISCONSIN,
Oneida County.

Received for Record this 19th day of
July A. D., 1954,
at 3:45 o'clock P.M., and recorded in
Vol. 199 of Deeds on page 249

Agnes Verage
Register of Deeds

Pa-420
Geo. E. Anderson
Deputy



ONEIDA LAKE

SURVEYOR'S CERTIFICATE
I, REITH H. HALL, COUNTY CLERK, BEING OF THE COUNTY OF ONEIDA, STATE OF WISCONSIN, DO HEREBY CERTIFY THAT THE FOREGOING SURVEY WAS MADE AND PLACED ON FILE IN ACCORDANCE WITH THE STATUTES OF THIS STATE, AND THAT THE SAME IS CORRECT AND TRUE TO THE BEST OF MY KNOWLEDGE AND BELIEF.

WELL CORNER - (S. 1) - SET BY REITH H. HALL FOR NORTH BAY CORNER OF THE PLAT.
S.T. (MEASUREMENT TO CENTER OF OBJECT.)
OLD PUMP LANDING - (NOTICED IN RELATION TO SEVERAL CONVEYANCES IN GOV. LOT 4.)
BEARS: 1. 10'-10" E. 88.6 FT.
WHITE PINE: 12" x 25" W. 31.48 FT.
CORNER PINE: 12" x 25" E. 25.2 FT.
WANGNER'S MEANDER CORNER
S.T. WHITE PINE STUMP 18" x 18 1/2" - C 10.94 FT.