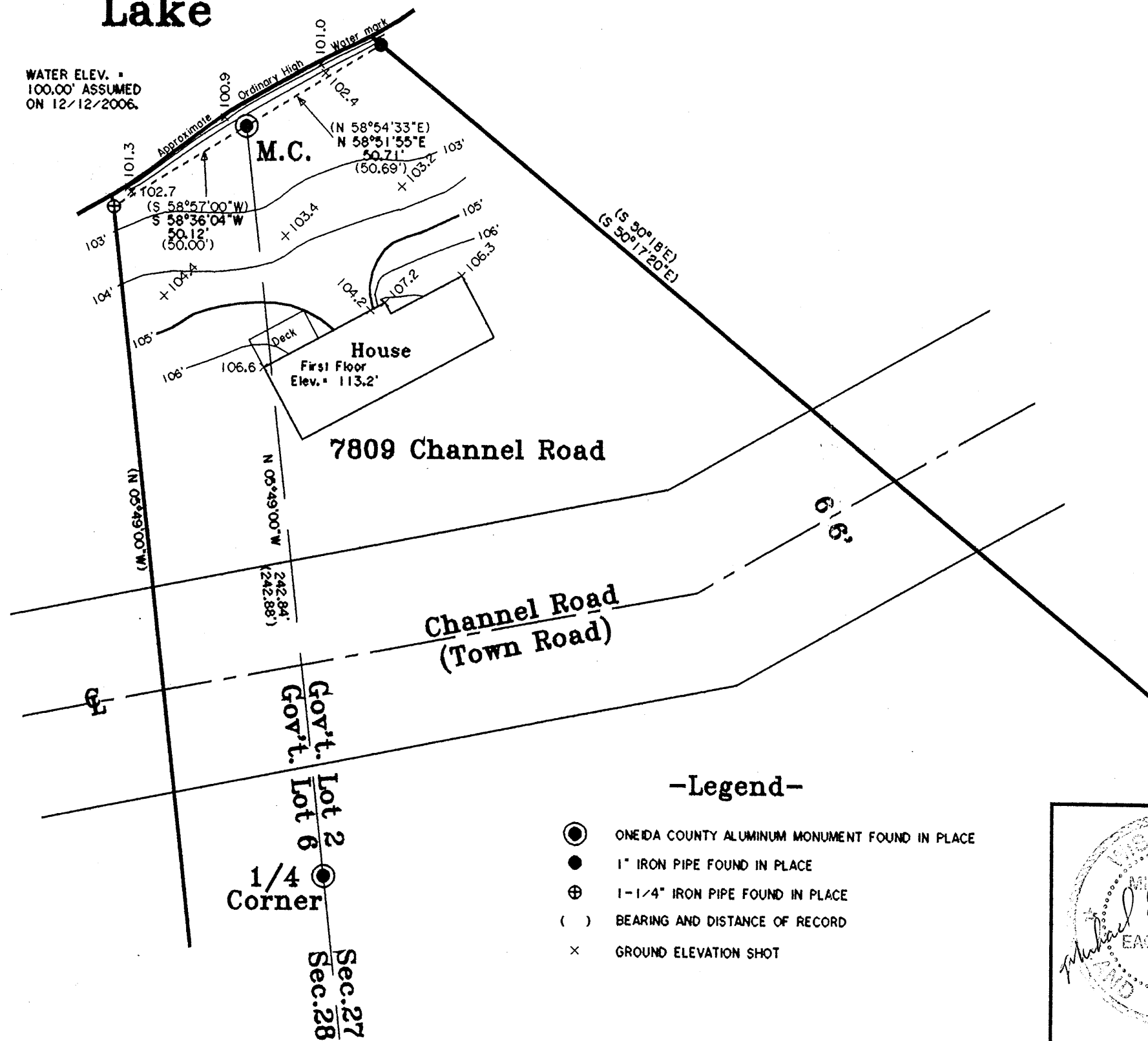


Chain Lake

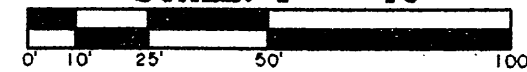
WATER ELEV. •
100.00' ASSUMED
ON 12/12/2006.



Being a Part of
Gov't. Lot 2
Section 27
 And Part of
Gov't. Lot 6
Section 28
T 39 N, R 9 E
 Township of Sugar Camp
 Oneida County, Wisconsin

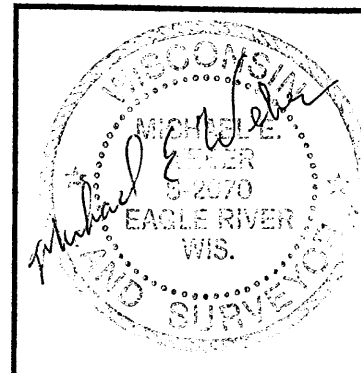
BEARINGS ARE BASED
 ON THE WEST LINE OF
 SECTION 27 WITH A
 BEARING OF S
 5°49'00"E FROM
 PREVIOUS SURVEY OF
 RECORD DONE BY EAGLE
 LANDMARK SURVEYING
 MAP HE9147-4.

SCALE: 1" = 40'



-Legend-

- ONEIDA COUNTY ALUMINUM MONUMENT FOUND IN PLACE
- 1" IRON PIPE FOUND IN PLACE
- ⊕ 1-1/4" IRON PIPE FOUND IN PLACE
- () BEARING AND DISTANCE OF RECORD
- × GROUND ELEVATION SHOT



F.E.M.A. Site Plan For
Kevin Olson
 7809 Channel Road
 Eagle River, WI 54521

SCALE 1" = 40' DATE 12-13-2006 DWN. BY. S.M.W.

Drawing No. **E3100**
Eagle Landmark Surveying, Inc.
 5035 Hwy. 70 West, Eagle River, WI 54521
 P & F (715)479-9610 eaglelandmark@verizon.net

MAP # **A 1853**
 DATE FILED **JAN 19 2007**
 BY *[Signature]*
 DESCRIPTION FILED
 ONEIDA CO. SURVEYOR'S OFFICE