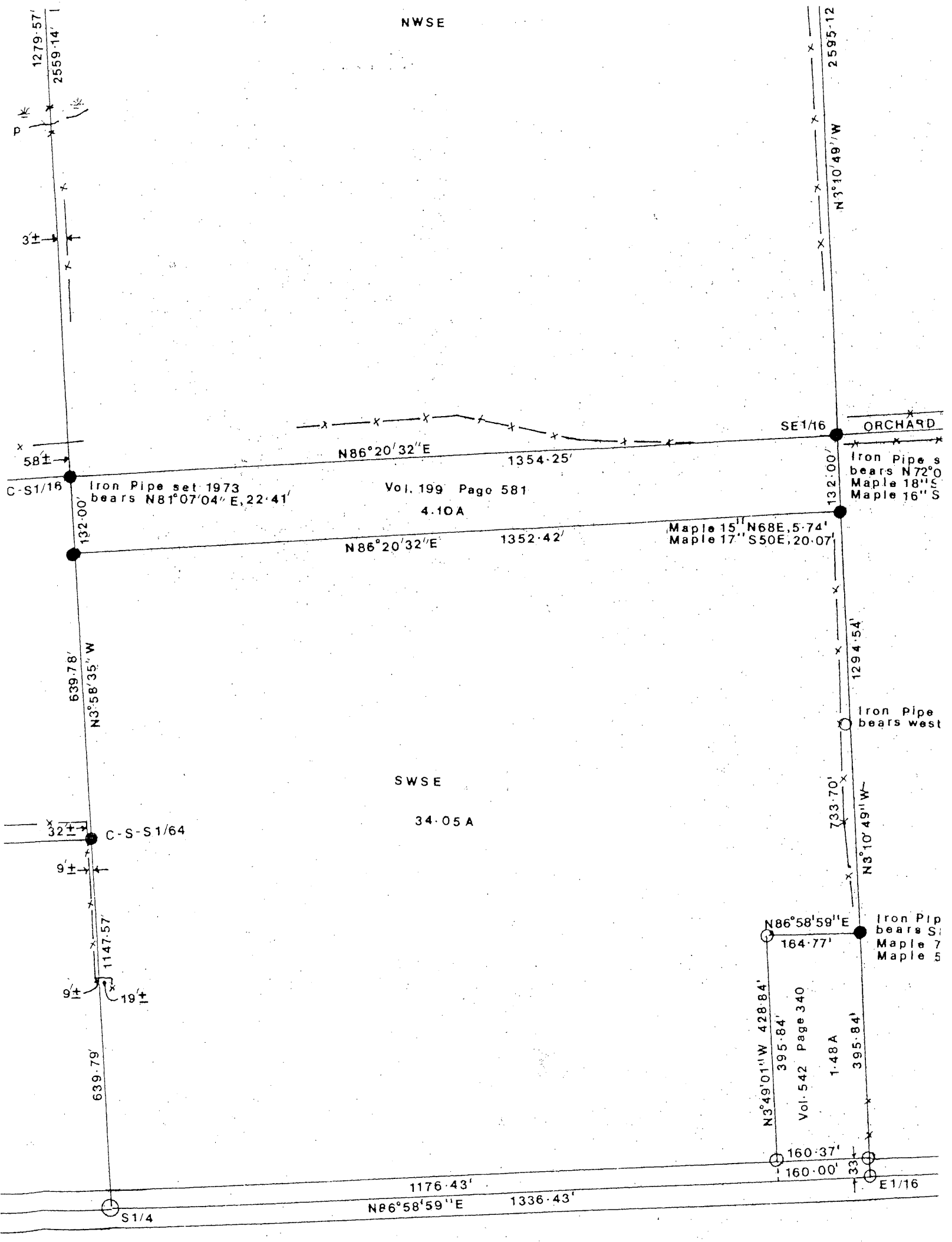


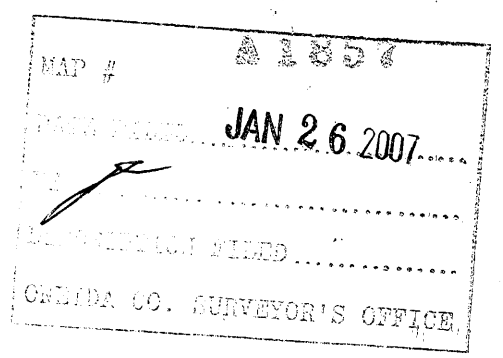
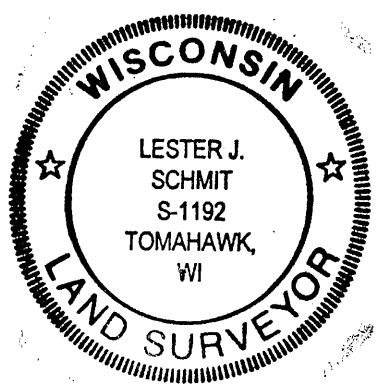
A 1857

A 1857



I ran a traverse between the East 1/4 corner and the South 1/4 corner of Section 11, Township 38 North, Range 9 East, tying in corners set to mark the Southeast and Southwest corners of the parcel described in Volume 199 on page 581. The field locations of these corners are the same as that called for on the Jean F. Resvick survey map dated December 1, 1988, filed as map # C595 in the Oneida County Surveyor's office. I placed steel T fence posts along the south line of the parcel described in Volume 199 on page 581 at random locations along said line. This work has been done at the direction of Ms. Diane Zabaly and is correct to the best of my knowledge and belief.

*Lester J. Schmit*  
 Lester J. Schmit R.L.S. S-1192  
 Dated this 16th day of May 2006



A 1857