

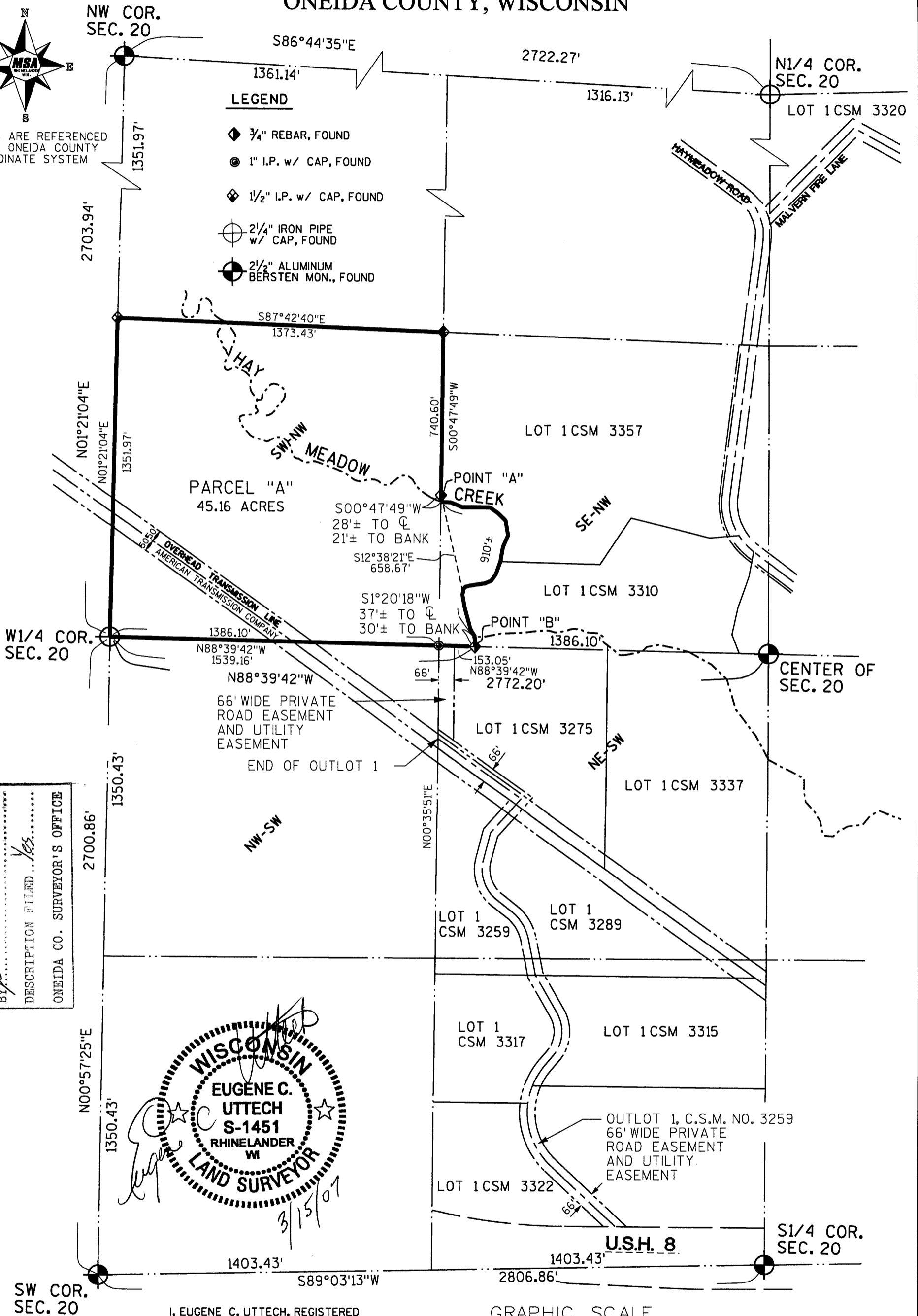
# LANDS BEING PART OF THE SW1/4 OF THE NW1/4, AND PART OF THE SE1/4 OF THE NW1/4, SECTION 20, T.36N., R.10E., TOWN OF PELICAN ONEIDA COUNTY, WISCONSIN



BEARINGS ARE REFERENCED TO THE ONEIDA COUNTY COORDINATE SYSTEM

### LEGEND

- ◆ 3/4" REBAR, FOUND
- 1" I.P. w/ CAP, FOUND
- ◆ 1/2" I.P. w/ CAP, FOUND
- ⊕ 2 1/4" IRON PIPE w/ CAP, FOUND
- ⊙ 2 1/2" ALUMINUM BERSTEN MON., FOUND



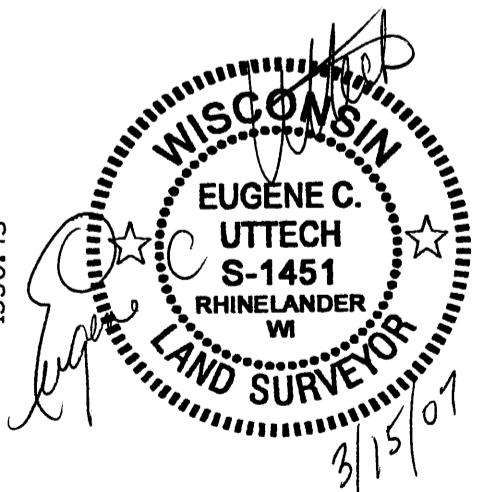
MAP # **1887**

DATE FILED **MAY 11 2007**

BY *[Signature]*

DESCRIPTION FILED *Yes*

ONEIDA CO. SURVEYOR'S OFFICE



I, EUGENE C. UTTECH, REGISTERED LAND SURVEYOR OF THE STATE OF WISCONSIN DO HEREBY CERTIFY THIS IS TRUE AND CORRECT TO THE BEST OF MY KNOWLEDGE AND BELIEF.

GRAPHIC SCALE



PLAT OF SURVEY	CADD SW-NW	F.B.I. _____	PROJECT NO.: 980607	NO.	DATE	REVISION	BY
OWNER: EVERGREEN LAND CO., INC.	PLOT \$DATES	DRAWN BY: SJZ	DATE: 3-14-07				
	PLOT \$TIMES	CHECKED BY: EUC	SCALE: 1"=400'				

**MSA** PROFESSIONAL SERVICES

TRANSPORTATION • MUNICIPAL DEVELOPMENT • ENVIRONMENTAL

1835 N. Stevens Street Rhinelanders, WI 54501  
715-362-3244 1-800-844-7854 Fax: 715-362-4116

© MSA PROFESSIONAL SERVICES