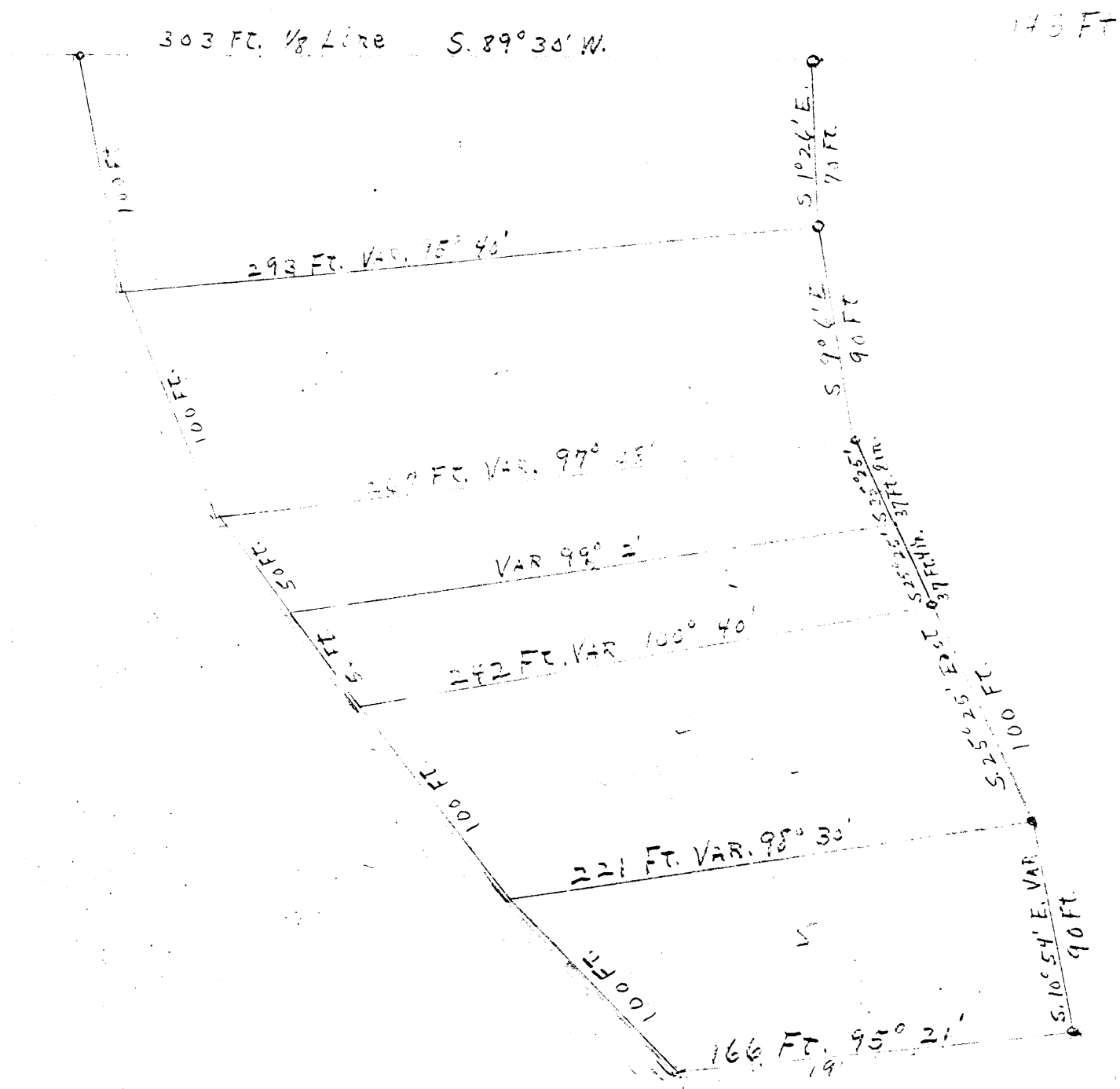


143 - No. 10 corner set by Laughlin in mid. between Govt. lots 4 & 5 and 303 ft. 3 in. from waters edge at post set.



PLAT OF J. P. WELLS

FIRST ADDITION OF GOVERNMENT

LOT FOUR - SECTION 36-7, 37 RANGE 8 ERSE.

OREIDA COUNTY

