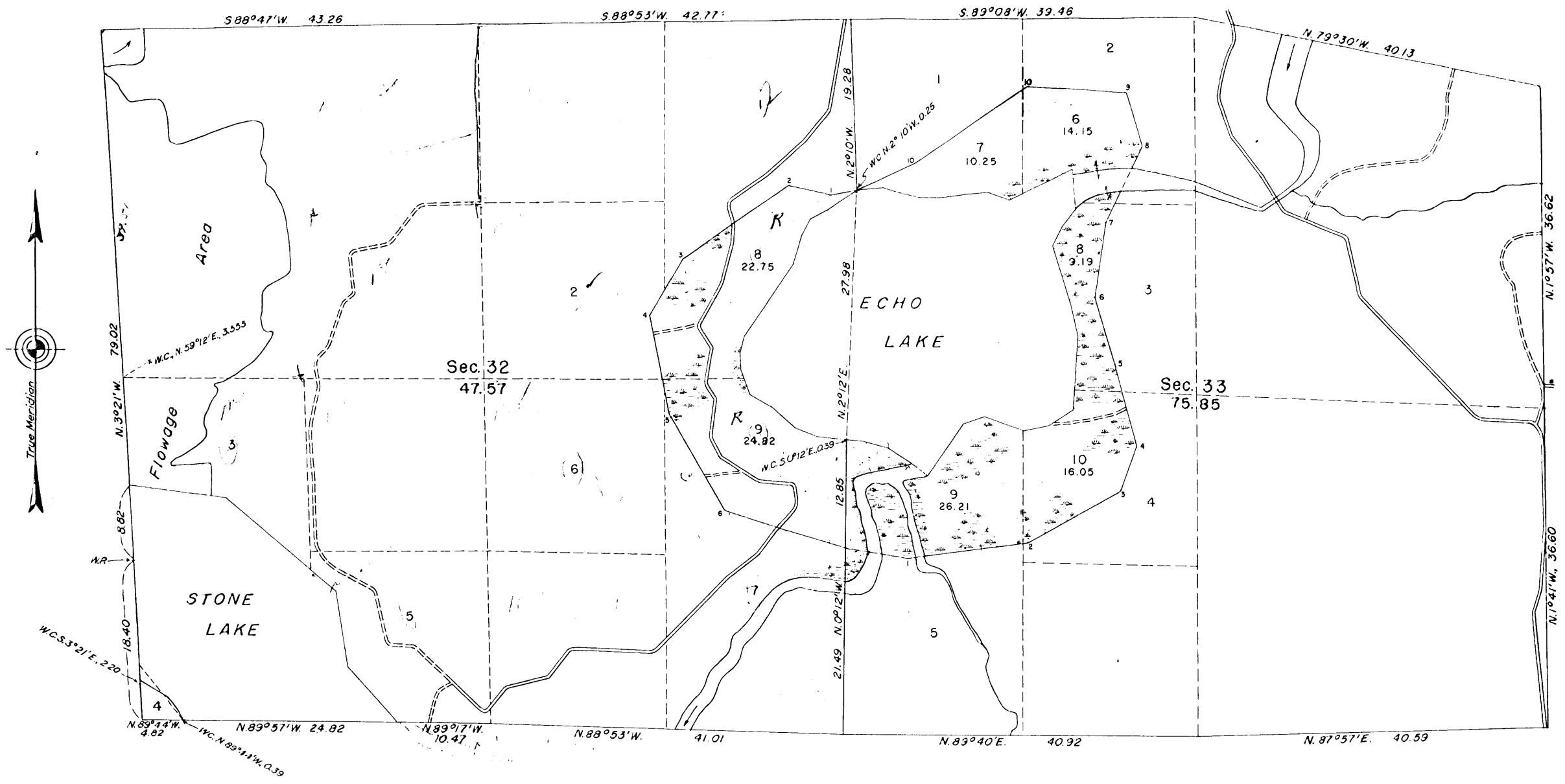


TOWNSHIP 39 NORTH, RANGE 9 EAST, OF THE FOURTH PRINCIPAL MERIDIAN, WISCONSIN
 OMITTED LANDS, SECTIONS 32 AND 33



This plat represents a retracement and reestablishment of the boundaries of secs. 32 and 33, designed to restore the corners in their original locations according to the best available evidence, and the survey of public lands which were erroneously omitted from the original survey and not shown upon the plat approved June 9, 1864.

The position of the original record meander courses of a lake in secs. 32 and 33 is shown by an irregular line with numbered angle points. This line as originally reported was grossly in error and therefore has been marked as a fixed boundary with the directions and lengths

UNITED STATES DEPARTMENT OF THE INTERIOR
 BUREAU OF LAND MANAGEMENT
 Washington, D. C., June 29, 1953

This plat is strictly conformable to the approved field notes, and the survey, having been correctly executed in accordance with the requirements of law and the