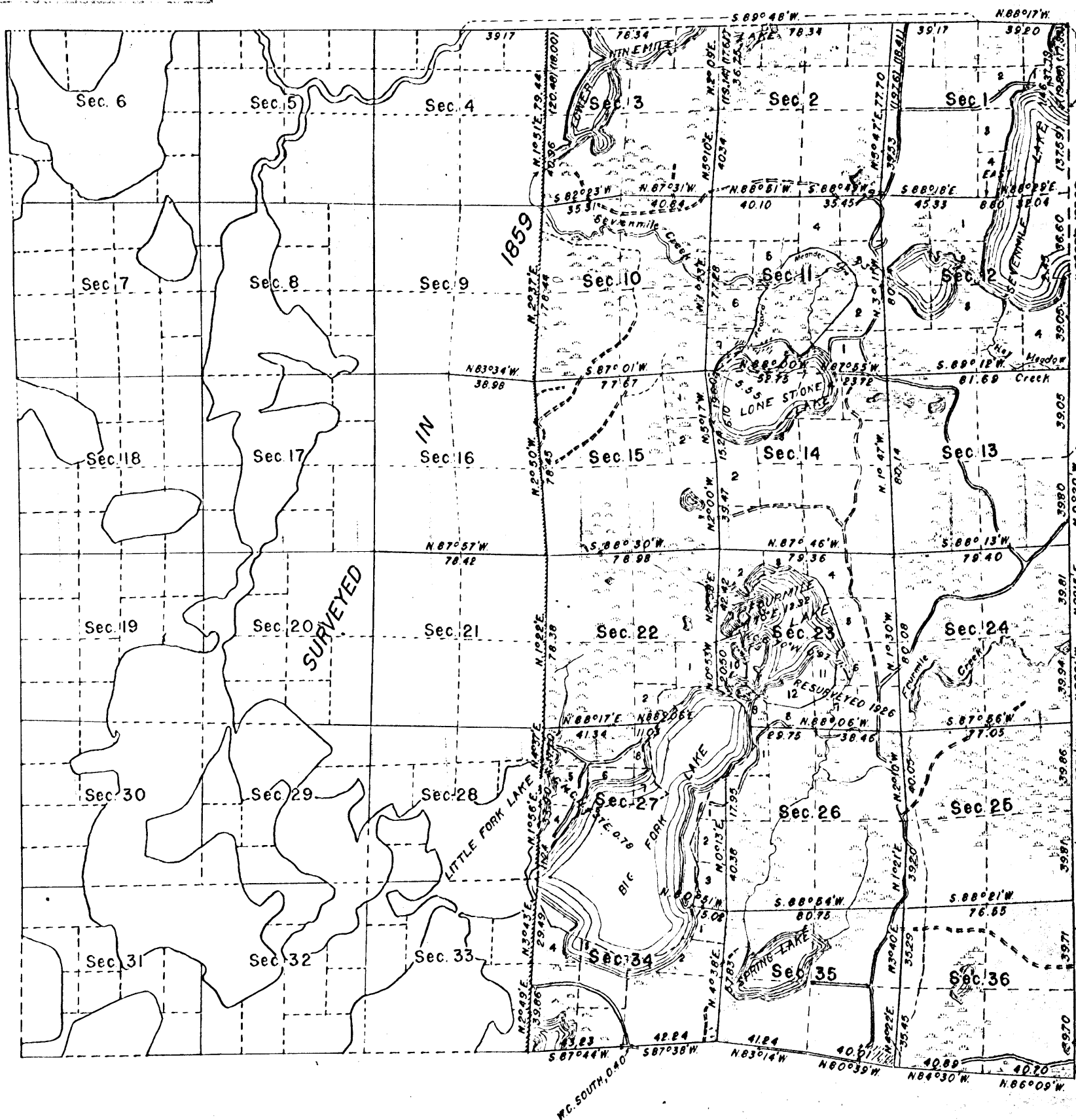


MAP # **A 1899**
 DATE FILED **MAY 25 2007**
 BY *[Signature]*
 DESCRIPTION FILED
 ONEIDA CO. SURVEYOR'S OFFICE



MEMORANDUM

THIS PLAT OF THE RESURVEY OF THE EAST HALF OF T. 39 N., R. 11 E., DELINEATES A RETRACEMENT AND REESTABLISHMENT OF THE LINES OF THE ORIGINAL SURVEY AS SHOWN UPON THE PLAT APPROVED FEBRUARY 4, 1860, IN THEIR TRUE ORIGINAL POSITIONS ACCORDING TO THE BEST AVAILABLE EVIDENCE OF THE POSITION OF THE ORIGINAL CORNERS. ALL DIFFERENCES BETWEEN THE MEASUREMENTS SHOWN ON THE ORIGINAL PLAT AND THOSE DERIVED IN THE RETRACEMENT HAVE BEEN DISTRIBUTED PROPORTIONALLY BETWEEN ACCEPTED CORNERS IN ACCORDANCE WITH SURVEYING RULES. REFERENCE WILL BE MADE TO THE ORIGINAL PLAT, AND TO THE PLAT APPROVED JULY 12, 1927, FOR THE SHOWING OF AREAS AND MORE DETAILED DESCRIPTIONS OF THE VARIOUS SMALLER SUBDIVISIONS.

IN GENERAL, THE TOWNSHIP SUPPORTS A FAIR STAND OF YOUNG NORWAY, WHITE AND JACK PINE, HEMLOCK, BIRCH, MAPLE AND POPLAR TIMBER, WITH SPRUCE, TAMARACK AND CEDAR IN THE SWAMPS.

THE RESURVEY WAS EXECUTED PURSUANT TO AUTHORITY CONTAINED IN GENERAL LAND OFFICE LETTER 1856603 "E" DATED MARCH 21, 1941.

ORIGINAL
 Received with letter
 Oct. 1, 1945
 from Supervisor
 [Signature]
 Dated to Div. of
 Vol. 72 - 1
 Plat officially filed
 May 23, 1945
 Miscellaneous 185

LATITUDE 45° 45' 35" N.
 LONGITUDE 89° 02' 51" W.

UNITED STATES DEPARTMENT OF THE INTERIOR
 GENERAL LAND OFFICE

Mean Magnetic Declination, 2° 45' E. Scale 40 Chains to an inch Area Resurveyed 9788.42 Acres.

DENVER, COLORADO, OCTOBER 1, 1943.

WASHINGTON, D.C., NOVEMBER 8, 1943.
 THE SURVEY REPRESENTED BY THIS PLAT HAVING