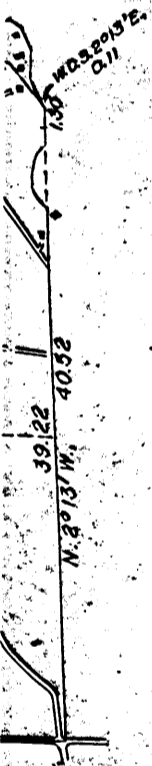
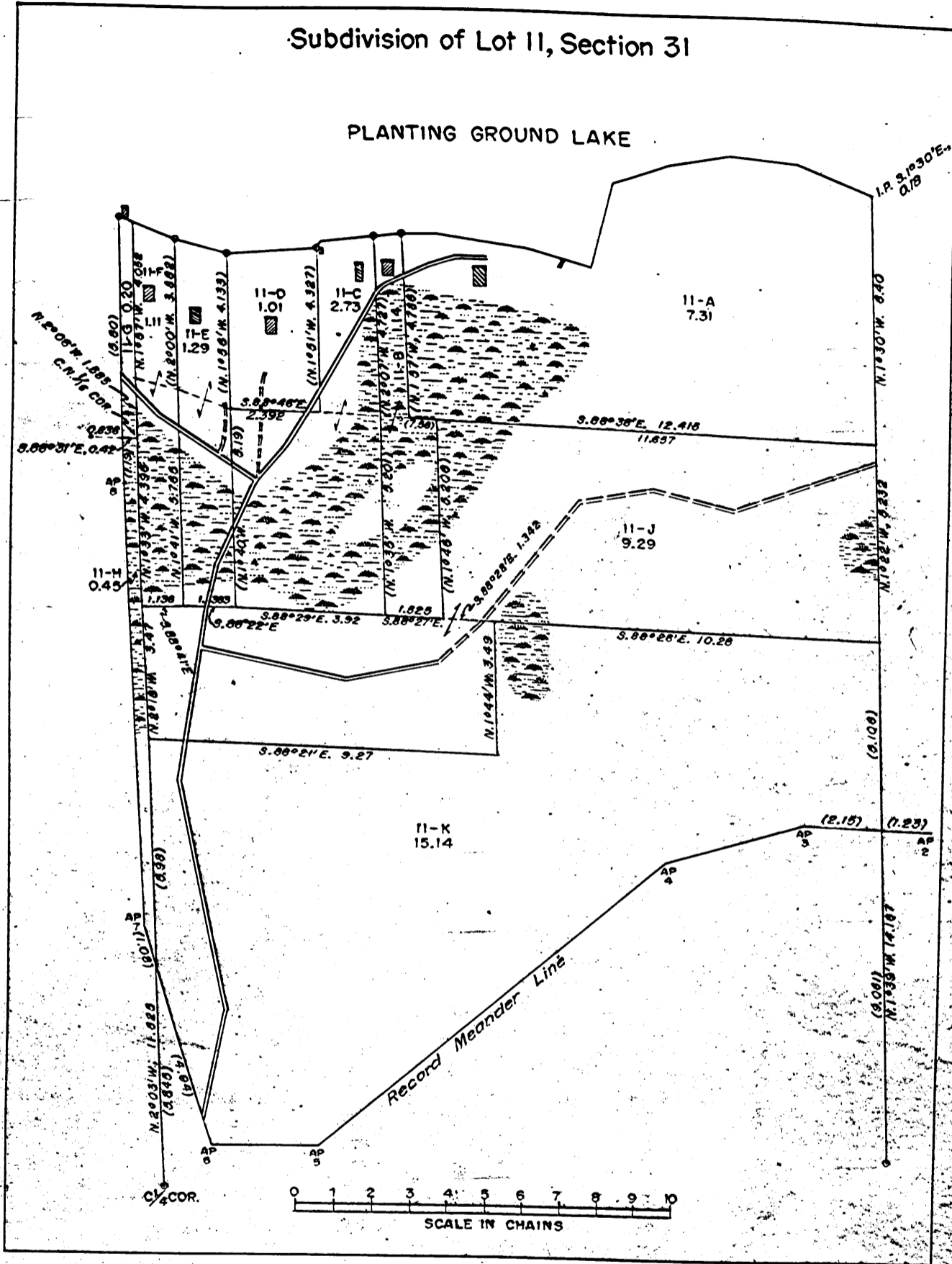


OF THE FOURTH PRINCIPAL MERIDIAN, WISCONSIN  
COMMITTED LANDS, SECTION 31



MAP # A 1900  
 DATE FILED MAY 25 2007  
 BY *[Signature]*  
 DESCRIPTION FILED  
 ONEIDA CO. SURVEYOR'S OFFICE

UNITED STATES DEPARTMENT OF THE INTERIOR  
 BUREAU OF LAND MANAGEMENT  
 Washington, D. C., November 16, 1953

This plat is strictly conformable to the approved field notes, and the survey, having been correctly executed in accordance with the requirements of law and the regulations of this Bureau, is hereby accepted.

For the Director  
*[Signature]*  
 Assistant Chief, Division of  
 Cadastral Engineering

37-39-11