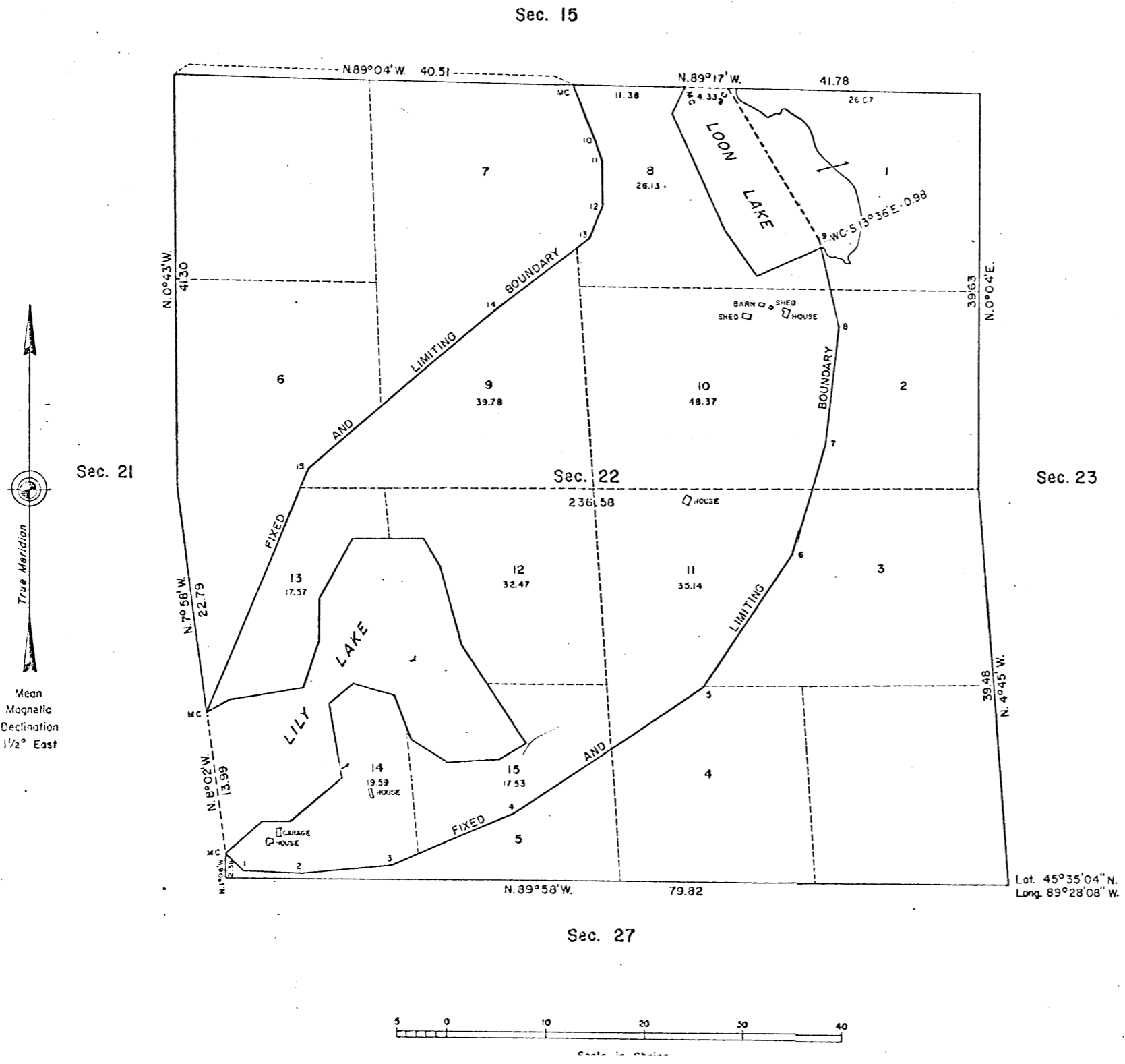


MAP # **A 1901**  
 DATE FILED **MAY 25 2007**  
 BY *[Signature]*  
 DESCRIPTION FILED .....  
 ONEIDA CO. SURVEYOR'S OFFICE

TOWNSHIP 36 NORTH, RANGE 8 EAST, OF THE FOURTH PRINCIPAL MERIDIAN, WISCONSIN  
 DEPENDENT RESURVEY AND SURVEY



A history of surveys is contained in the field notes.

This plat represents a dependent resurvey of a portion of the subdivisional lines, and original meander lines, designed to restore the corners in their true original locations according to the best available evidence, and the survey of the present meander lines of Lily Lake and Loon Lake in section 22, T. 36 N., R. 8 E., Fourth Principal Meridian, Wisconsin.

The new lottings and acreages shown in section 22 are the result of lands omitted from the original survey. They encompass the areas between the original meander lines, which are recognized now as fixed boundary lines, and the present meander lines of Lily Lake and Loon Lake.

Except as shown hereon, the areas are as shown on the plat approved March 18, 1864.

Survey executed by Ronald J. Eberle, Cadastral Surveyor, from May 6 to June 7, 1974, pursuant to Special Instructions dated May 1, 1974 for Group No. 100, Wisconsin.

UNITED STATES DEPARTMENT OF THE INTERIOR  
 BUREAU OF LAND MANAGEMENT  
 Washington, D.C. December 10, 1975

This plat is strictly conformable to the approved field notes, and the survey, having been correctly executed in accordance with the requirements of law and the regulations of this Bureau, is hereby accepted.

For the Director

*[Signature]*

1901

1901