

**SPOT ELEVATION MAP FOR DRIVEWAY
LOCATION FOR LANDS LOCATED IN
GOV'T. LOT 6, SEC. 19, T. 36 N., R. 10 E.,
TOWN OF PELICAN, ONEIDA COUNTY, WI.**

SPOT ELEVATION MAP
FOR
JAMES BECKER

observed water elevation
May, 7, 2007 el. 1550.47'

100 year highwater el. 1555.0

Bench mark location
19+00 spike in power pole
32' left el. 1560.79'
Dot. State project #9877-1-70

LEGEND

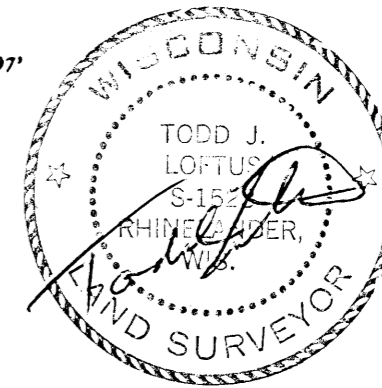
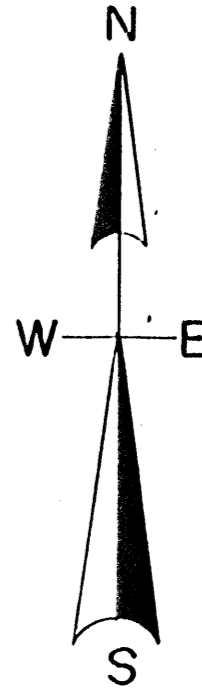
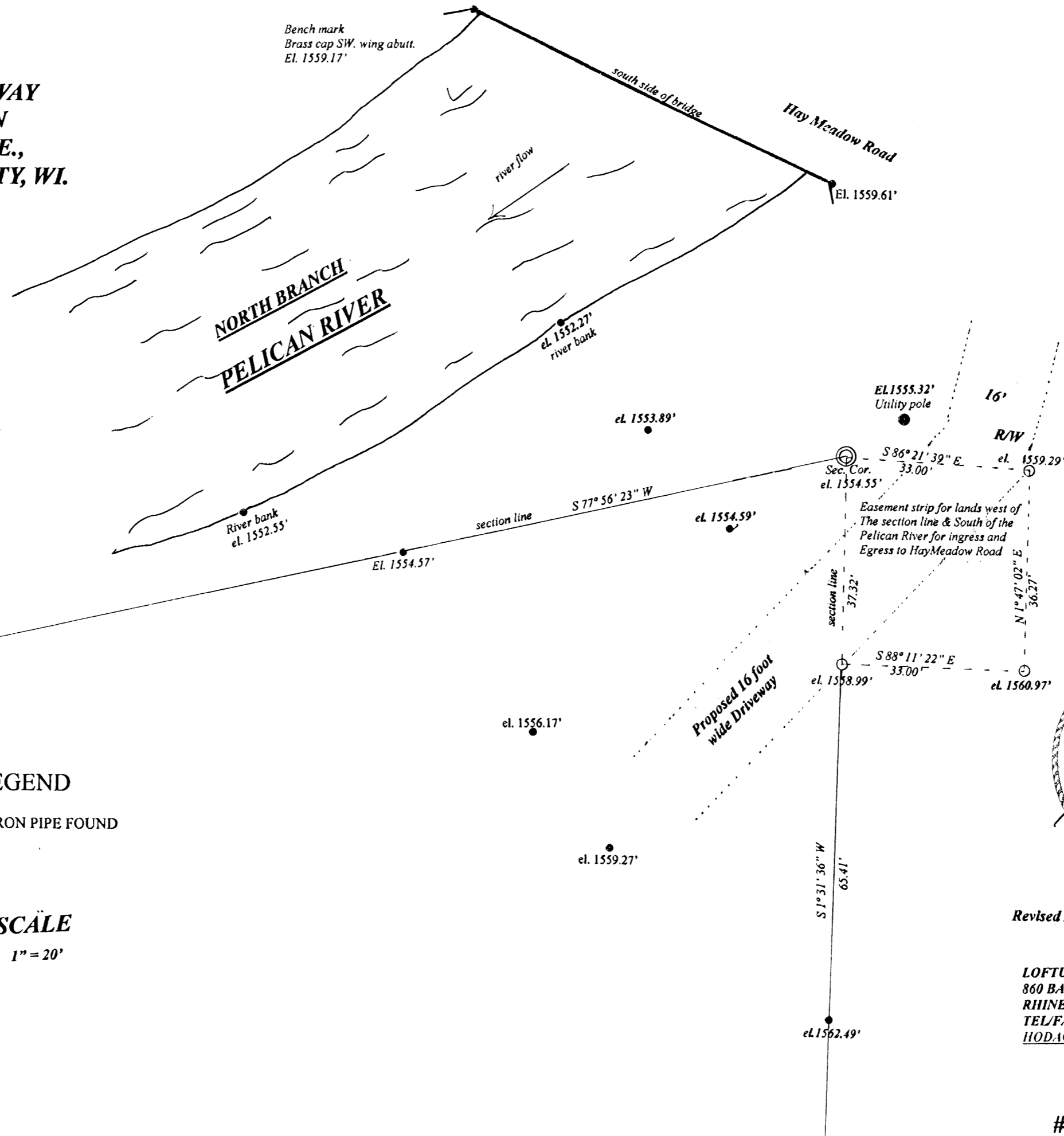
⊙ IRON PIPE FOUND

SCALE

1" = 20'

MAP #	A 1928
DATE FILED	AUG 15 2007
BY	<i>[Signature]</i>
DESCRIPTION FILED
ONEIDA CO. SURVEYOR'S OFFICE	

**I, Todd Loftus, Registered Land Surveyor,
Hereby certify that the spot elevations taken
Are correct to the best of my knowledge & belief.**



Revised August 5th, 2007

LOFTUS SURVEYING
860 BALSAM STREET
RHINELANDER, WI. 54501
TEL/FAX 715-369-1142
HODAG28@HOTMAIL.COM

#1529B5