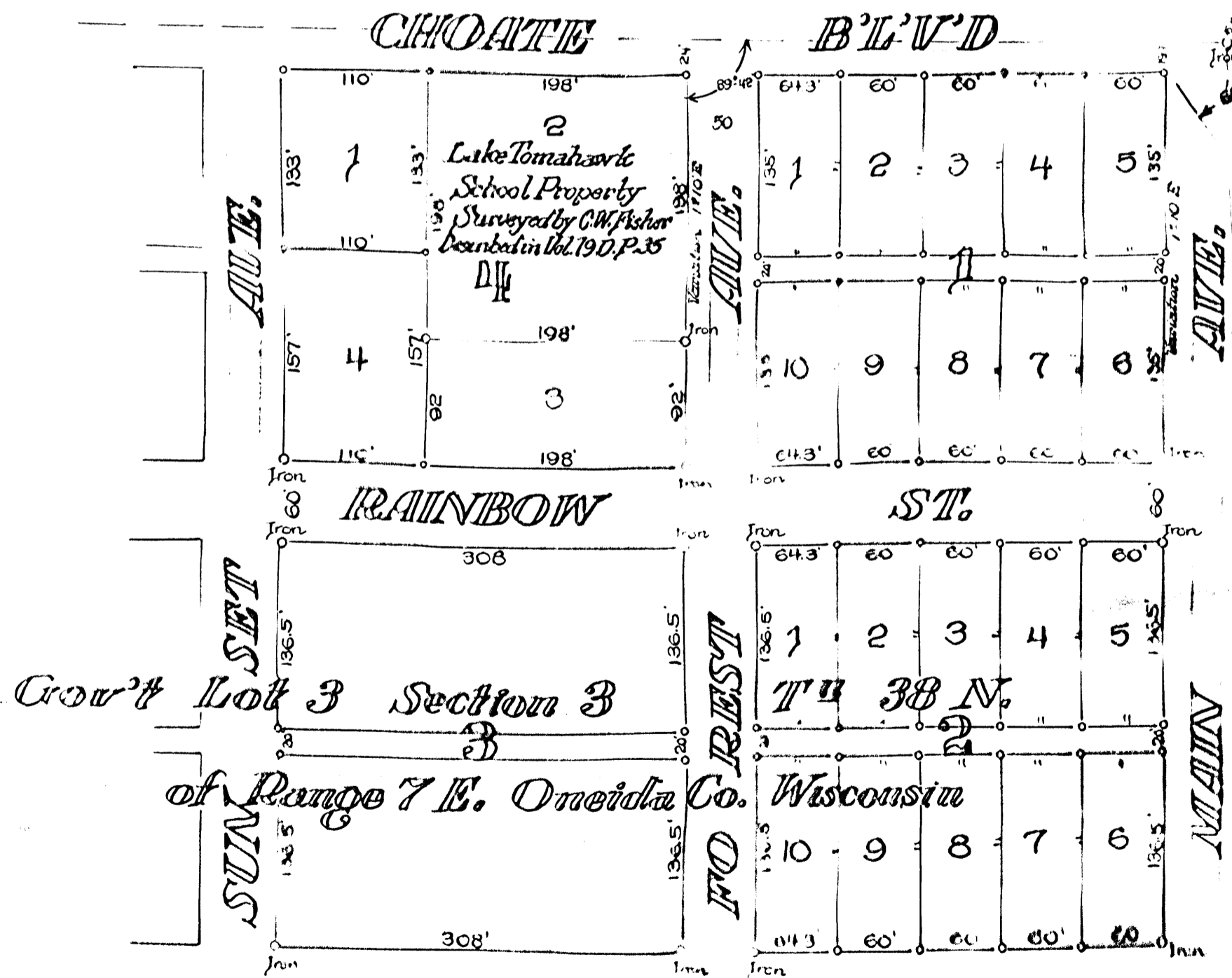
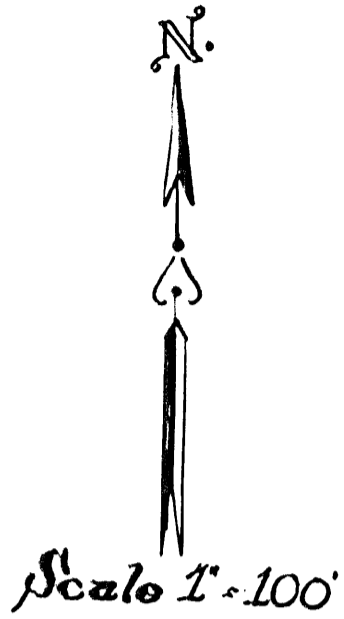


MAP # A1942
 DATE FILED SEP 19 1909
 BY
 DESCRIPTION FILED
 ONEIDA COUNTY CLERK'S OFFICE

Mrs. M. A. LEBERT'S ~~partition~~ *partition* to the
 VILLAGE OF LAKE TOMAHAWK

1942



8

1942

1942