

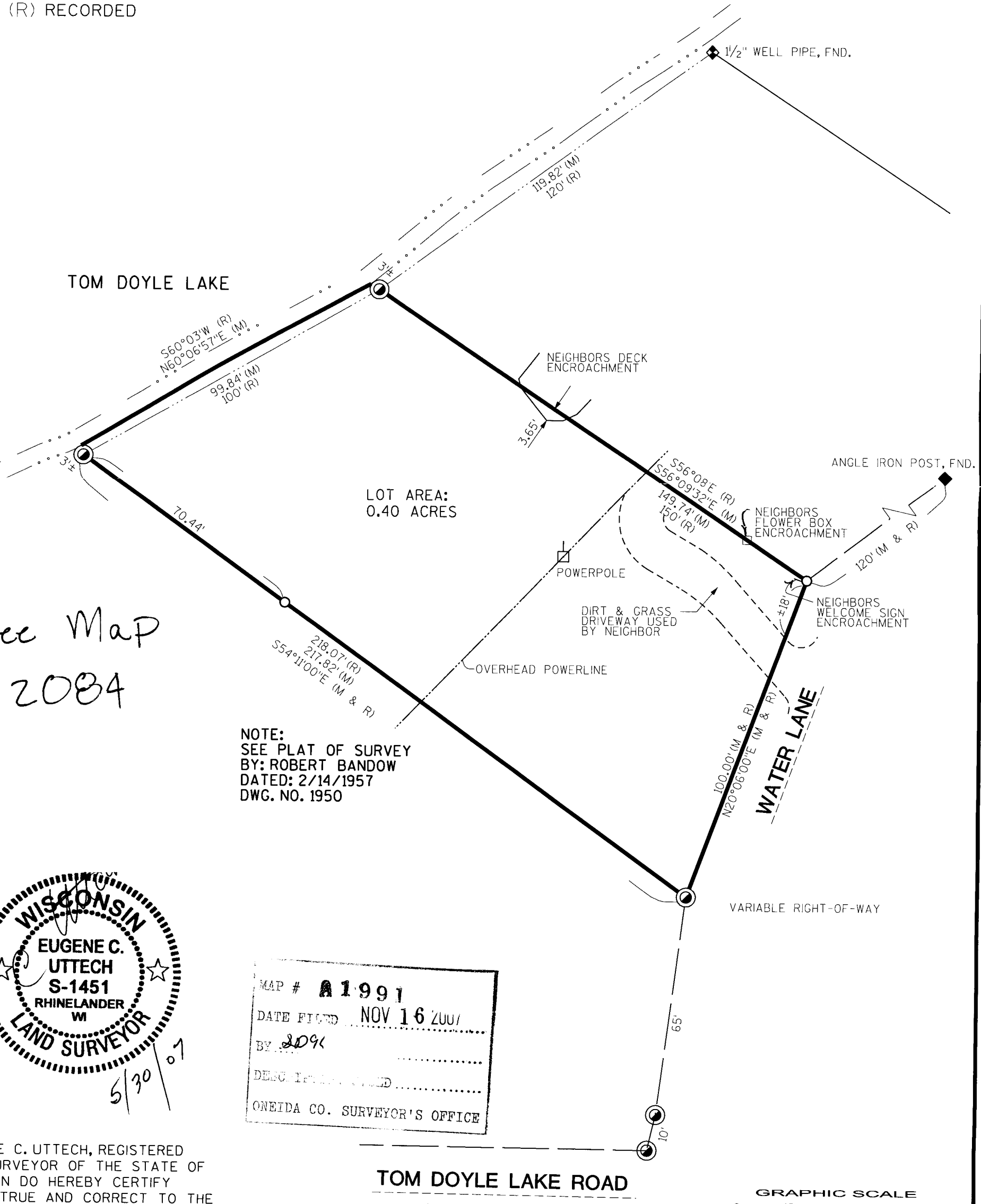
LANDS BEING LOCATED IN GOV'T LOT 2, SECTION 19, T.39N., R.5E., TOWN OF MINOCQUA, ONEIDA COUNTY, WI

OWNERS:
JOSEF KRAUS & GUNDIKRAUS
DESCRIBED IN DOC. NO. 639311
IN ONEIDA COUNTY REGISTER OF DEEDS



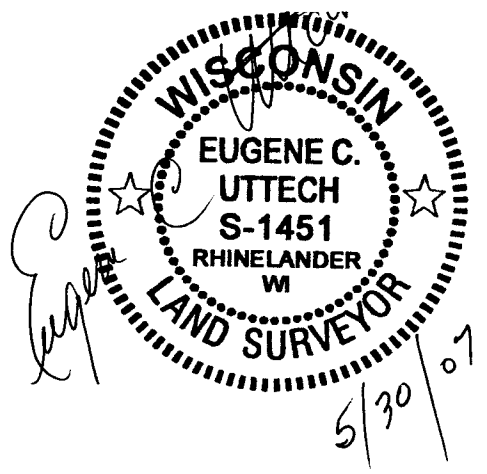
LEGEND

- ⊙ 1" IRON PIPE, FOUND
- 3/4" x 18" REBAR WEIGHING 1.5lbs./LINEAL FT., SET
- (M) MEASURED
- (R) RECORDED



See Map
A2084

NOTE:
SEE PLAT OF SURVEY
BY: ROBERT BANDOW
DATED: 2/14/1957
DWG. NO. 1950



MAP # **A1991**
 DATE FILED **NOV 16 2007**
 BY **SJZ**
 CHECKED BY **ECU**
 ONEIDA CO. SURVEYOR'S OFFICE

I, EUGENE C. UTTECH, REGISTERED LAND SURVEYOR OF THE STATE OF WISCONSIN DO HEREBY CERTIFY THIS IS TRUE AND CORRECT TO THE BEST OF MY KNOWLEDGE AND BELIEF.



OWNER: JOSEF & GUNDI KRAUS WISCONSIN	FILE: \$FILE\$ABBREVS	F.B.:	PROJECT NO: 980792	NO.	DATE	REVISION	BY
	PLOT DATE: \$DATES	DRAWN BY: SJZ	DATE: 05/31/2007				
	PLOT TIME: \$TIMES	CHECKED BY: ECU	SCALE: AS SHOWN				

MSA
PROFESSIONAL SERVICES

TRANSPORTATION • MUNICIPAL
DEVELOPMENT • ENVIRONMENTAL
1835 N. Stevens St. Rhineland, WI 54981
715-362-3044 1-800-844-7854 Fax: 715-362-4116
© MSA PROFESSIONAL SERVICES