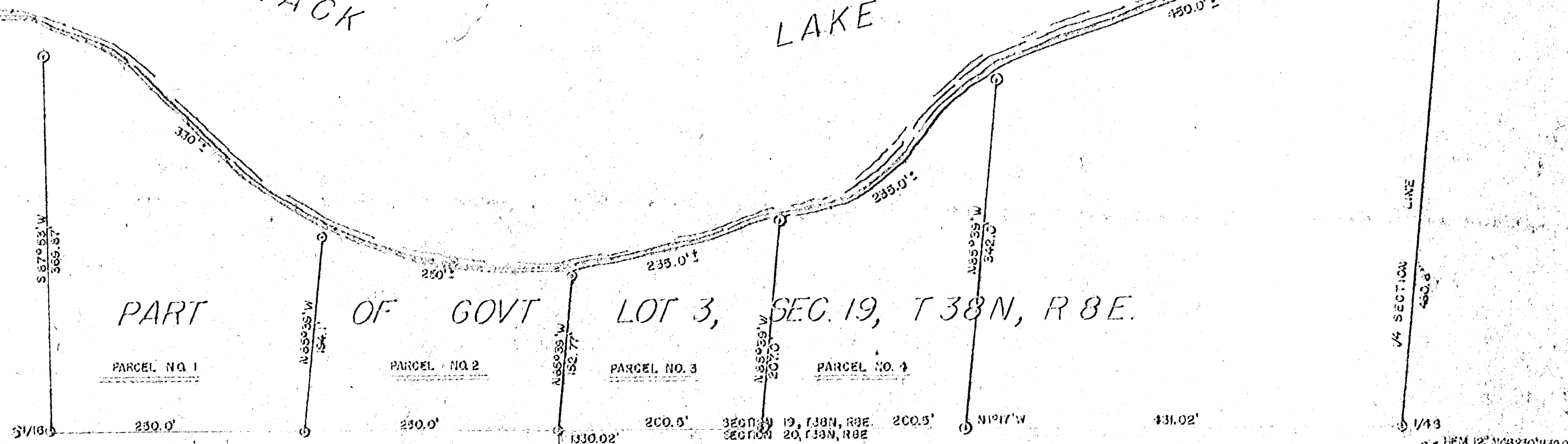


2003

2003

BLACK LAKE

PART OF GOVT LOT 3, SEC. 19, T38N, R8E.



MAP # 2003
 DATE FILED NOV 21 2007
 BY SDK
 DESCRIPTION FILED
 ONEIDA CO. SURVEYOR'S OFFICE

GENISOT & ASSOCIATES, INC.
 RHINELANDER, WIS.

REVISIONS			SURVEY FOR		
NO.	DATE	BY	GLAUDE E. SENSKA		
1	20 JULY 93	N.K.	McNAUGHTON WISCONSIN DRAWN BY N.K. SCALE 1" = 100' CHECKED DATE DRAWING NO. TRACED APP'D 2375-1		
2	3 JULY 94	N.K.			
3					
4					
5					

2003

2003