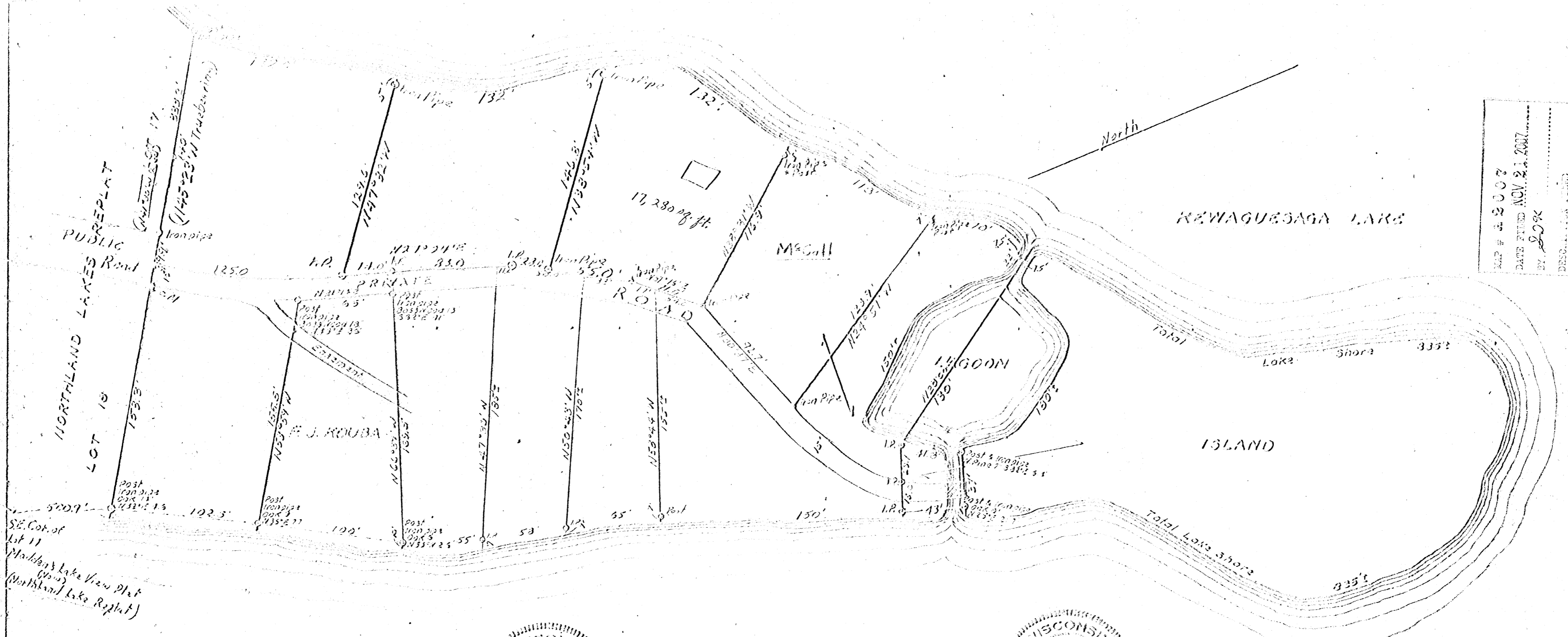


20007

20007

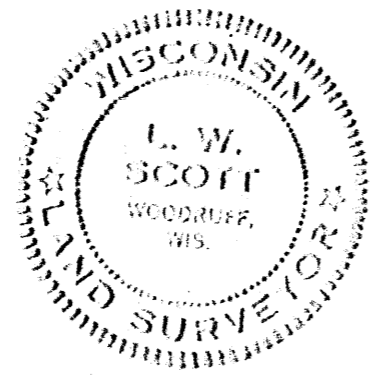
20007

20007



MAP # 20007
 DATE FILED NOV. 21, 1963
 BY: [Signature]
 DESCR. FOR RECORD
 ONEIDA CO. SURVEYOR'S OFFICE

Scale: 1 inch = 50 feet
 Revised: June 19, 1962
 July 21, 1962
 Nov. 20, 1963
 Oct 19, 1966



GOV'T. LOT 5
 SECTION 16, T39N-R6E
 ONEIDA COUNTY, WIS.
 October 21, 1963
 S. J. Kowalek
 Surveyor



KEWAGUESAGA LAKE

5-3-62