

# TOMAHAWK LAKE

## ONEIDA COUNTY, WIS.

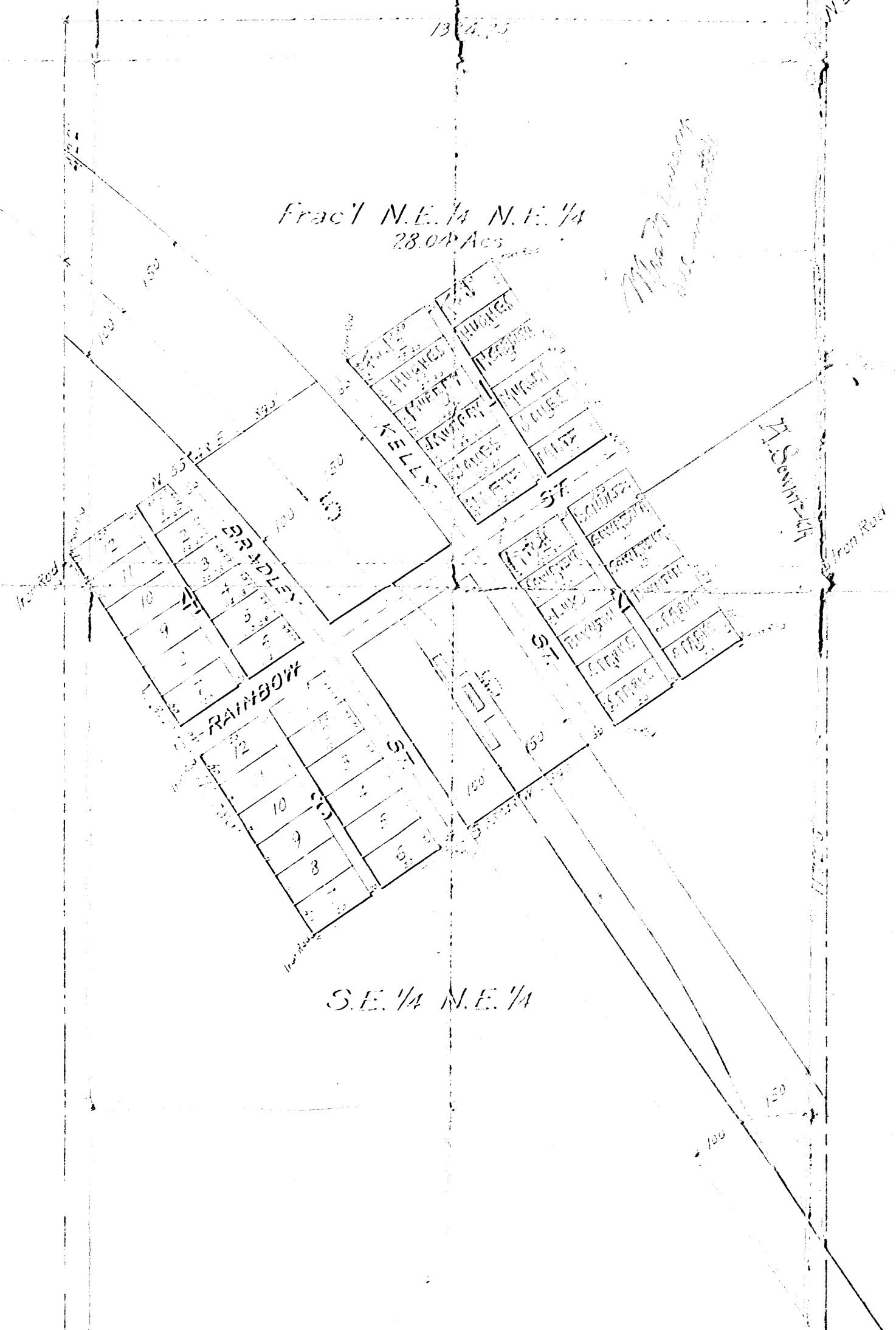
E. 1/2 N.E. frac. 1/4 Sec. 3. 38.7

200' = 1"

1374.75

N.E. COR. SEC. 3. 38.7 E.

Frac' N.E. 1/4 N.E. 1/4  
28.04 Acs



S.E. 1/4 N.E. 1/4

Key. 3. 15. 1904

NOV 21 1907

3096