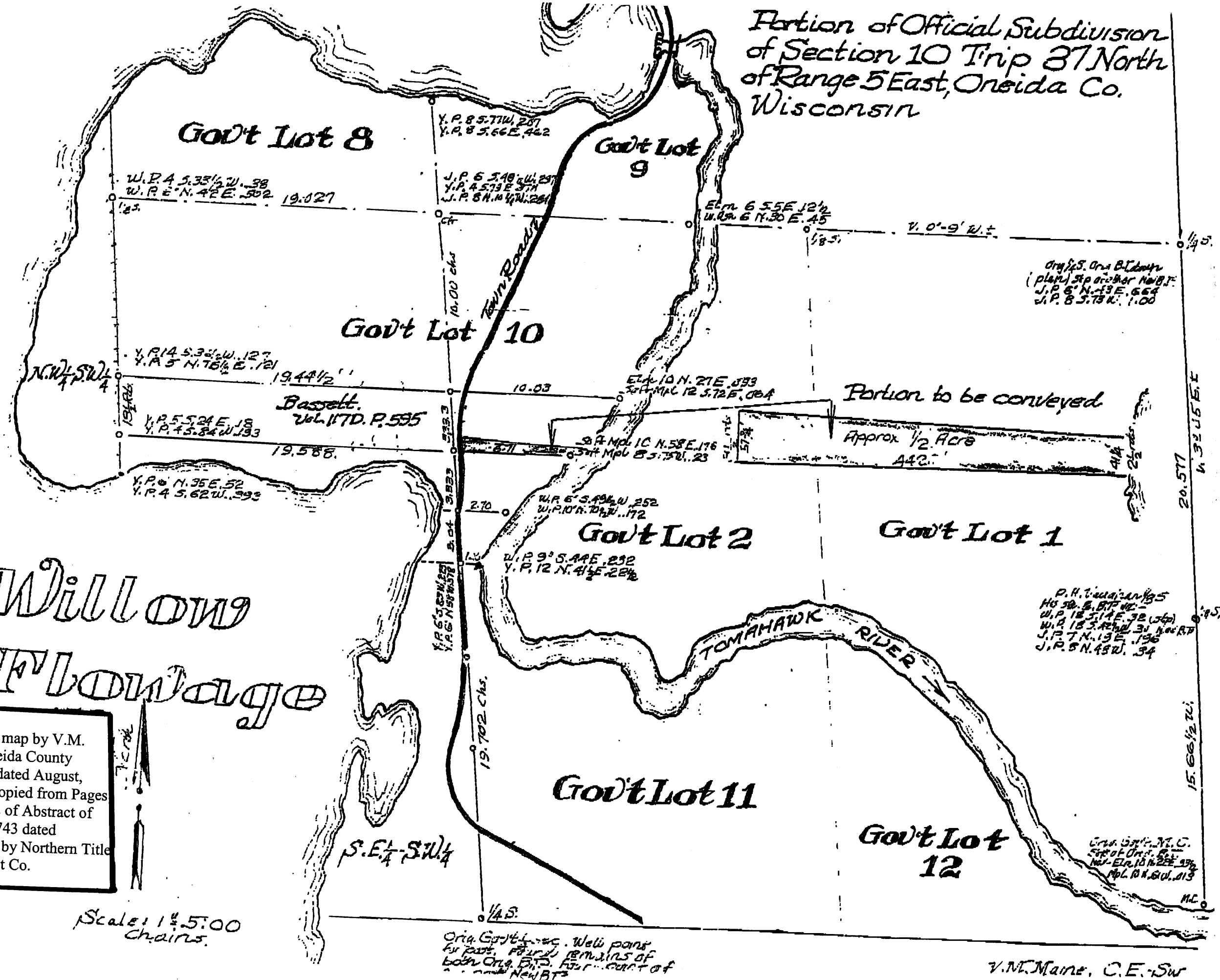


Portion of Official Subdivision
of Section 10 Trip 37 North
of Range 5 East, Oneida Co.
Wisconsin

MAP # A 2027
DATE FILED JAN 18 2008
BY *SOX*
DESCRIPTION FILED
ONEIDA CO. SURVEYOR'S OFFICE



Note: This map by V.M. Maine, Oneida County Surveyor dated August, 1938 was copied from Pages 28-a and 32 of Abstract of Title No. 2743 dated 10/26/1961 by Northern Title and Abstract Co.

Scale: 1" = 500
Chains.

Orig. Gov't. sec. Well point
for part. Found remains of
both Orig. Div. and part of
New BT

V.M. Maine, C.E. - Sw