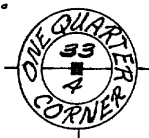
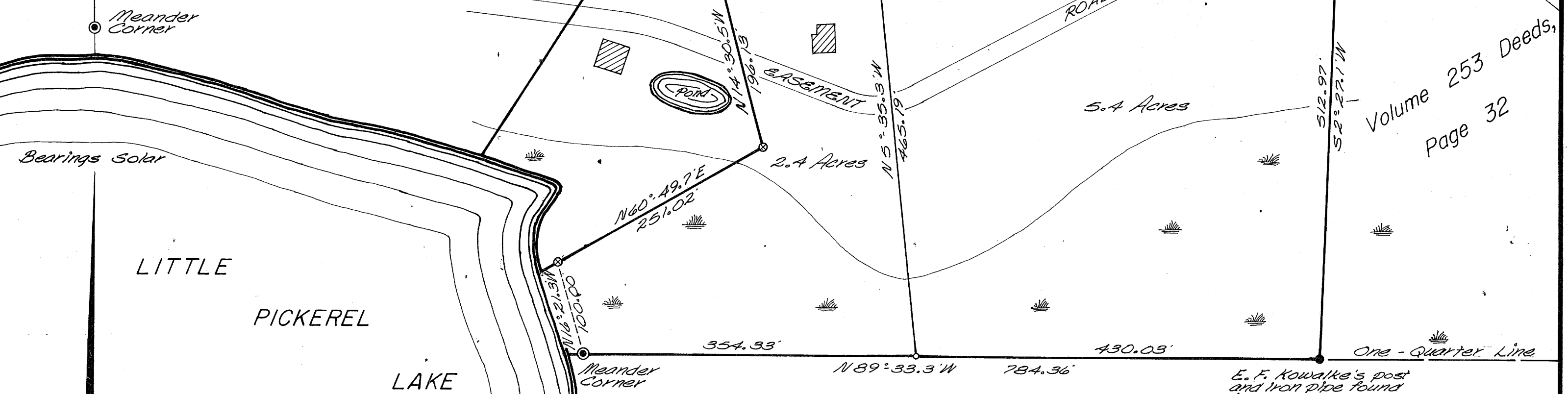


Vilas County brass capped concrete monument found in place.



RECEIVED & FILED # **A 204**
Oneida County Surveyor's Office
Date **FEB 10 1986**
By **M. J. H.**
OCS Area #

1/8 Corner E. F. Kowalke's post and iron pipe found in place. Erroneous 1/8 corner (well point) bears N26°11'W, 0.68.



Volume 253 Deeds,
Page 32

Bearings Solar

LITTLE PICKEREL LAKE

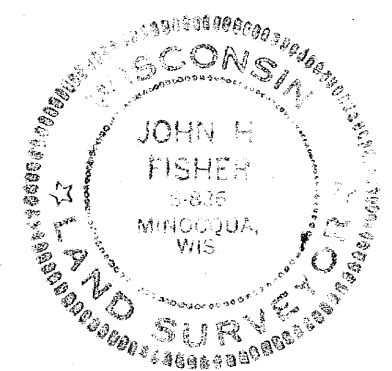
Part of the
NE FRACTIONAL 1/4 SECTION 4, T39N, R8E

Newbold Township
Oneida County, Wis.

- ⊙ = Well point found in place.
- = Concrete monument found in place.
- ⊙ = Iron pipe found in place.
- = Iron pipe set.
- ⊗ = Iron rod set.

Scale 1" = 100'

August, 1974



Northwoods Surveyors Inc.

John H. Fisher
Land Surveyor

~~JUN 10 1974~~
HERBERT MOORE
County Surveyor
Oneida County, Wisconsin
Courthouse
Rhinelander, Wisconsin 54501
182-4-398

A204