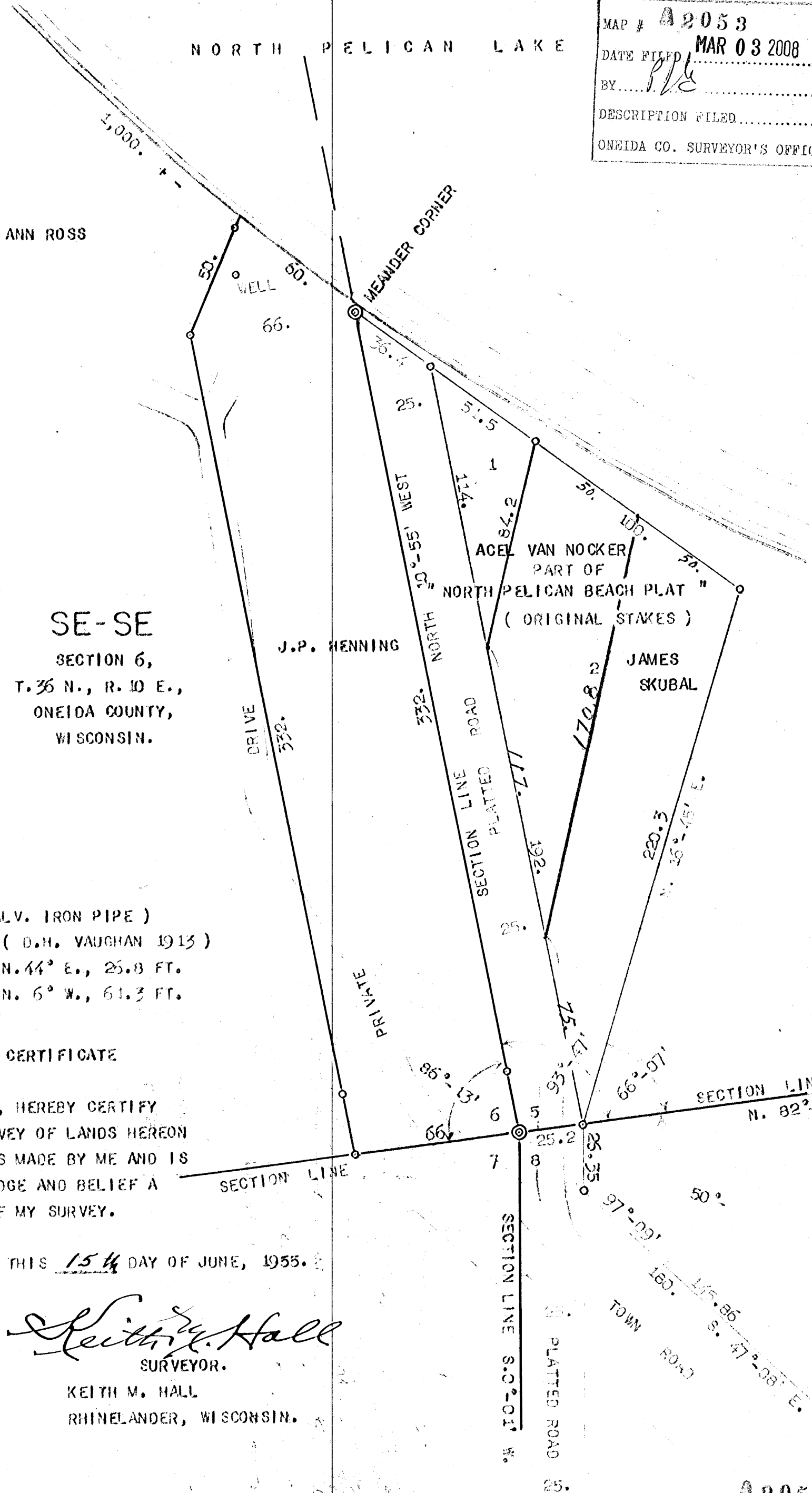


SCALE
1 INCH = 40. FT.

MAP #	A2053
DATE FILED	MAR 03 2008
BY	<i>PLC</i>
DESCRIPTION FILED	
ONEIDA CO. SURVEYOR'S OFFICE	



SE-SE
 SECTION 6,
 T. 36 N., R. 10 E.,
 ONEIDA COUNTY,
 WISCONSIN.

SECTION CORNER (GALV. IRON PIPE)
 BEARING TREES; (D.H. VAUGHAN 1913)
 MAPLE 8 INCH N. 44° E., 25.8 FT.
 MAPLE 9 INCH N. 6° W., 61.3 FT.

SURVEYOR'S CERTIFICATE

I, KEITH M. HALL, HEREBY CERTIFY
 THAT I HAVE MADE THE SURVEY OF LANDS HEREON
 SHOWN; THAT THIS MAP WAS MADE BY ME AND IS
 TO THE BEST OF MY KNOWLEDGE AND BELIEF A
 CORRECT REPRESENTATION OF MY SURVEY.

SIGNED THIS 15th DAY OF JUNE, 1955.

Keith M. Hall
SURVEYOR.

KEITH M. HALL
RHINELANDER, WISCONSIN.