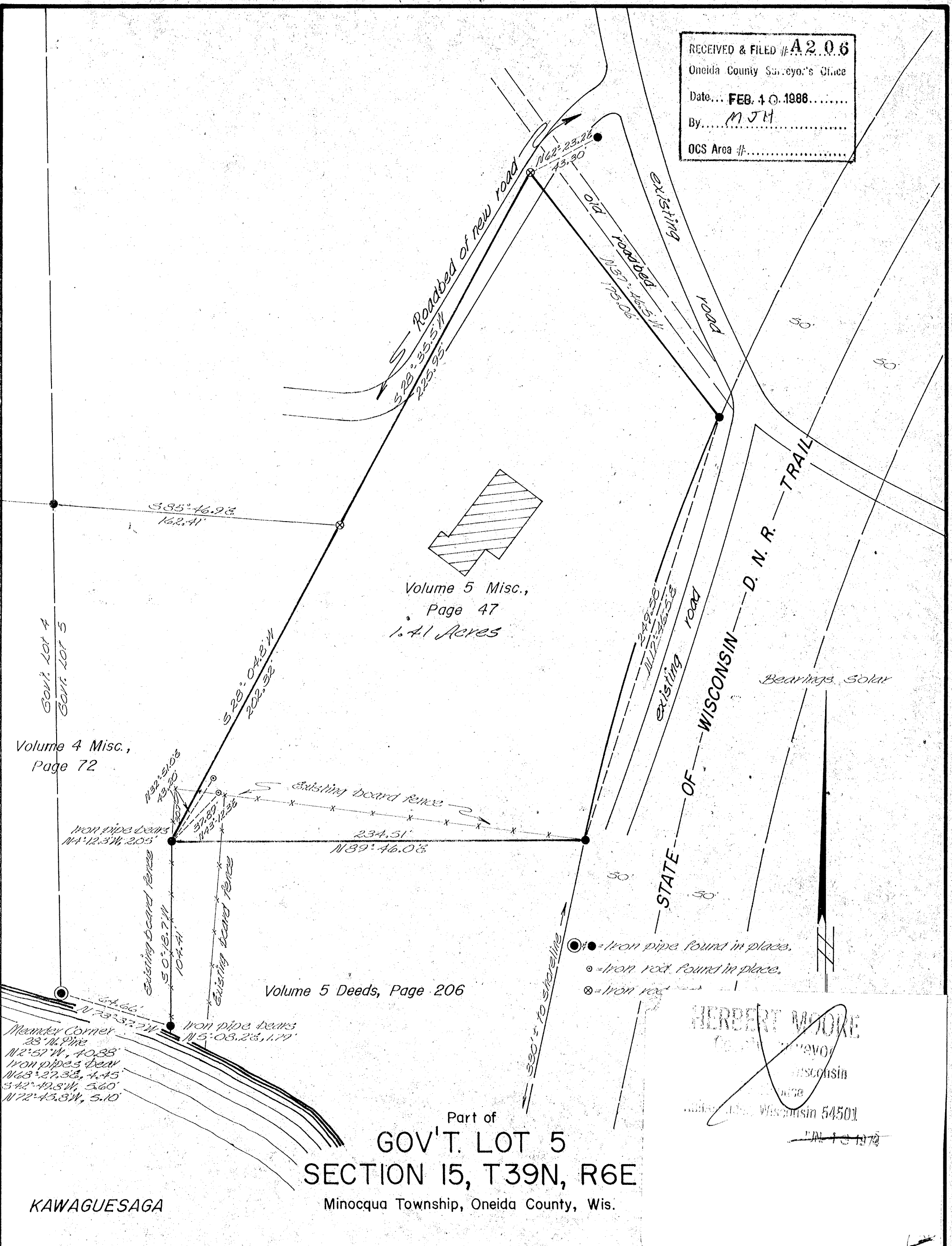


RECEIVED & FILED # **A 206**  
 Oneida County Surveyor's Office  
 Date... **FEB. 4 0. 1988**.....  
 By... **M J H**.....  
 OCS Area #.....



Gov't Lot 4  
 Gov't Lot 5  
 Volume 4 Misc.,  
 Page 72

Volume 5 Misc.,  
 Page 47  
 1.41 Acres

Volume 5 Deeds, Page 206

Meander Corner  
 23' 14.8" Pine  
 N 12° 57' W, 40.38'  
 Iron pipe & beam  
 N 68° 27' 38" W, 4.45'  
 S 42° 49' 8" W, 5.60'  
 N 72° 45' 8" W, 5.10'

Part of  
**GOV'T. LOT 5**  
**SECTION 15, T39N, R6E**  
 Minocqua Township, Oneida County, Wis.

**KAWAGUESAGA**  
**LAKE**

**HERBERT MOORE**  
 Surveyor  
 Wisconsin  
 License No. 54501  
 JAN 13 1978

Scale 1"=50'

October, 1974



Northwoods Surveyors Inc.

*John H. Fisher*  
 Land Surveyor

1903V

8-15-596