

A 2061

A 2061

A 2061



Wis Highway No 63

Arthur Steiner

Carl Steiner

230' to Iron Pipe
237' Water

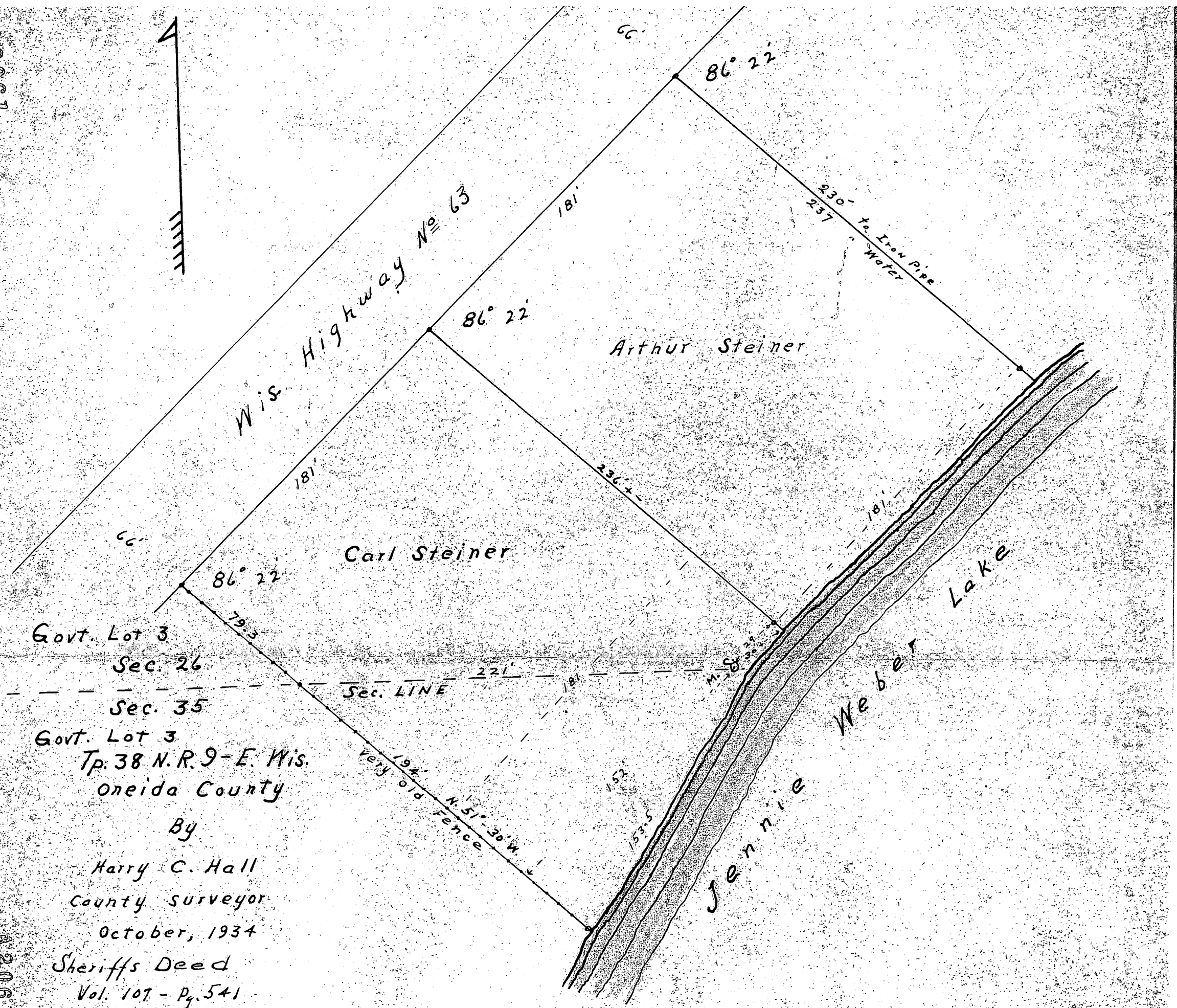
Jennie Weber Lake

Govt. Lot 3
Sec. 26
Sec. 35
Govt. Lot 3
Tp. 38 N. R. 9 - E. Wis.
Oneida County

By

Harry C. Hall
County Surveyor
October, 1934

Sheriff's Deed
Vol. 107 - Pg. 541



MAP #	A 2061
DATE FILED	MAR 18 2008
BY	[Signature]
DESCRIPTION FILED
ONEIDA CO. SURVEYOR'S OFFICE