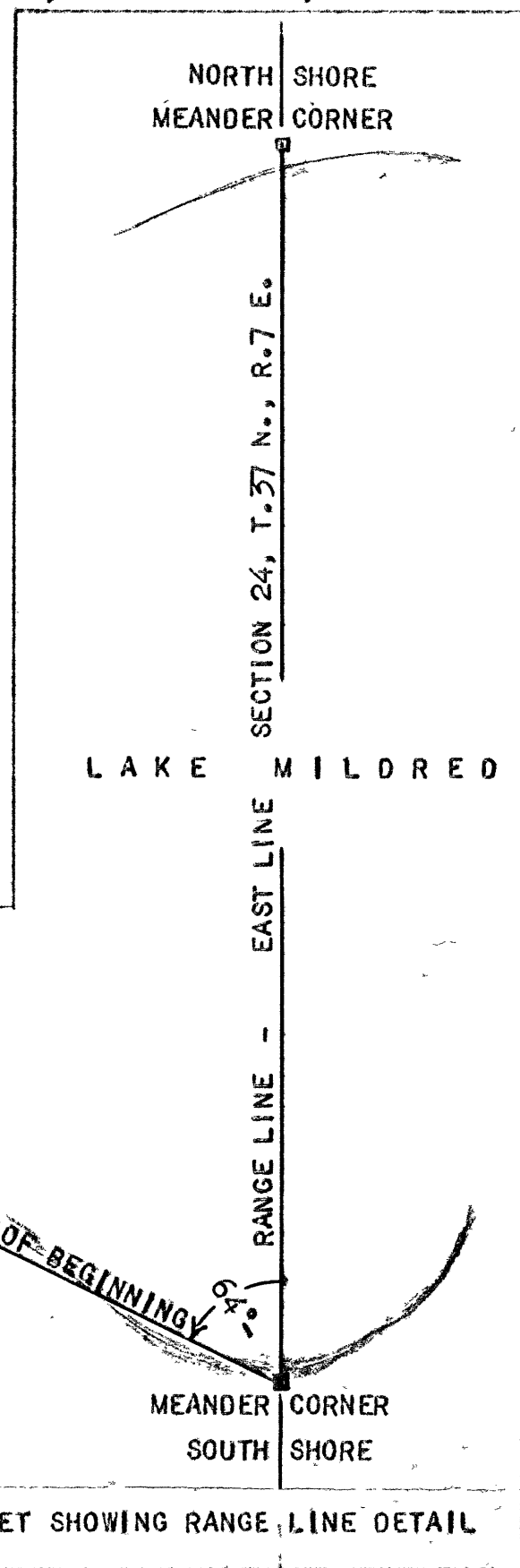
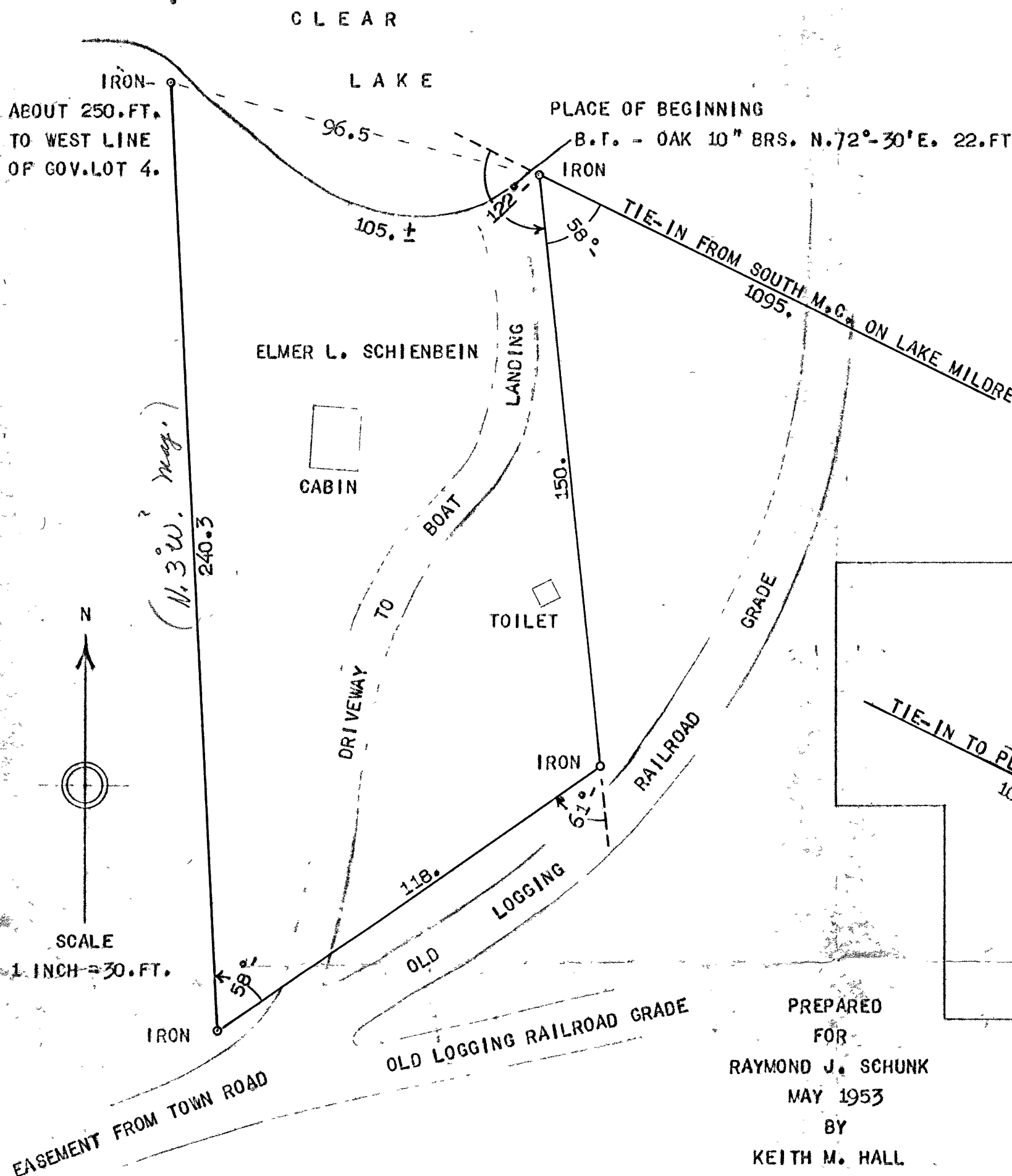


SURVEY OF A PARCEL OF LAND IN GOV. LOT 4, SECTION 24, TOWNSHIP 37 NORTH, RANGE 7 EAST, ONEIDA COUNTY, WISCONSIN.



SCALE  
1 INCH = 30 FT.

EASEMENT FROM TOWN ROAD

PREPARED FOR  
 RAYMOND J. SCHUNK  
 MAY 1953  
 BY  
 KEITH M. HALL  
 SURVEYOR  
 RHINELANDER, WISCONSIN.

APPROX. SOUTH LINE OF GOV. LOT 4, SECTION 24, T. 37 N., R. 7 E.

MAP # A2072  
 DATE FILED APR 03 2008  
 BY PLS  
 DESCRIPTION FILED  
 ONEIDA CO. SURVEYOR'S OFFICE