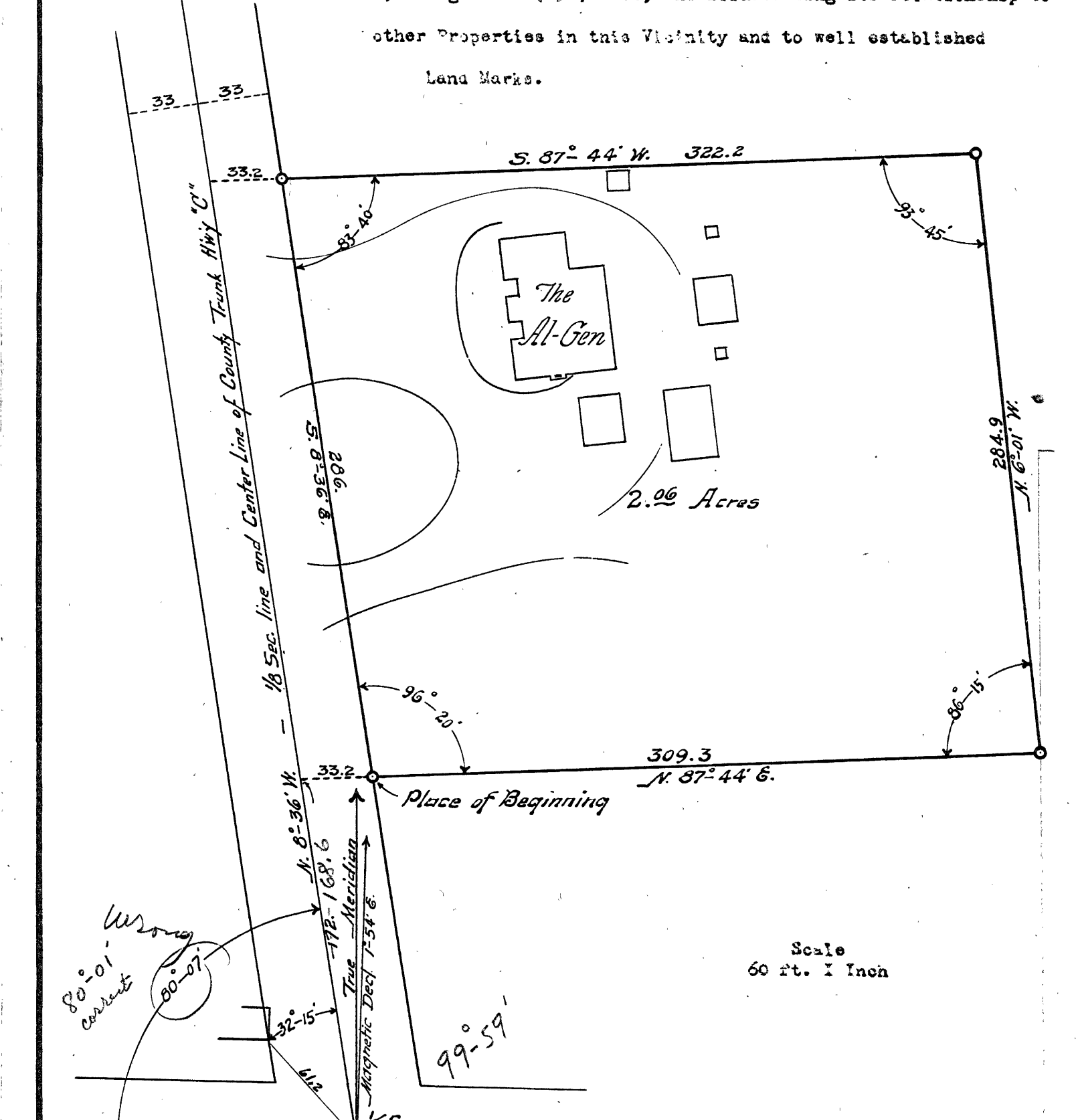


Plat of Survey of the Jenny E. Nelson Property known as the "AL-Gen",  
 on County Trunk Highway "C" two miles East of Rhinelander, in Oneida  
 County, Wisconsin, Showing its position in the Southeast Quarter of the  
 Southeast Quarter of Section Four (4), Township Thirty-Six (36)  
 North, Range Nine (9) East, and illustrating its relationship to  
 other Properties in this Vicinity and to well established  
 Land Marks.



**Surveyor's Certificate**

This one parcel was created to replace and consolidate four previously deeded parcels having imperfect and ill-fitting descriptions and to give maximum protection thru greater precision, and to cover and conform with present occupation - where desirable and agreeable - and to include an additional strip of land to compensate for acreage given in an adjustment on the rear and for acreage forfeited for road purposes in the front.

I hereby Certify that I, Keith M. Hall have Surveyed the above property. That all Courses shown are True Courses ( derived from an observation on Polaris ) and that the lines staked on the premises and hereon drawn are a true representation of the boundaries of this land.

MAP # A 2075  
 DATE FILED APR 03 1940  
 BY P Ls  
 DESCRIPTION FILED  
 ONEIDA CO. SURVEYOR'S OFFICE

Signed, May 20, 1940  
 Keith M. Hall  
 Surveyor.