

Quarter Line of Section 5, T. 36 N., R. 9 E.

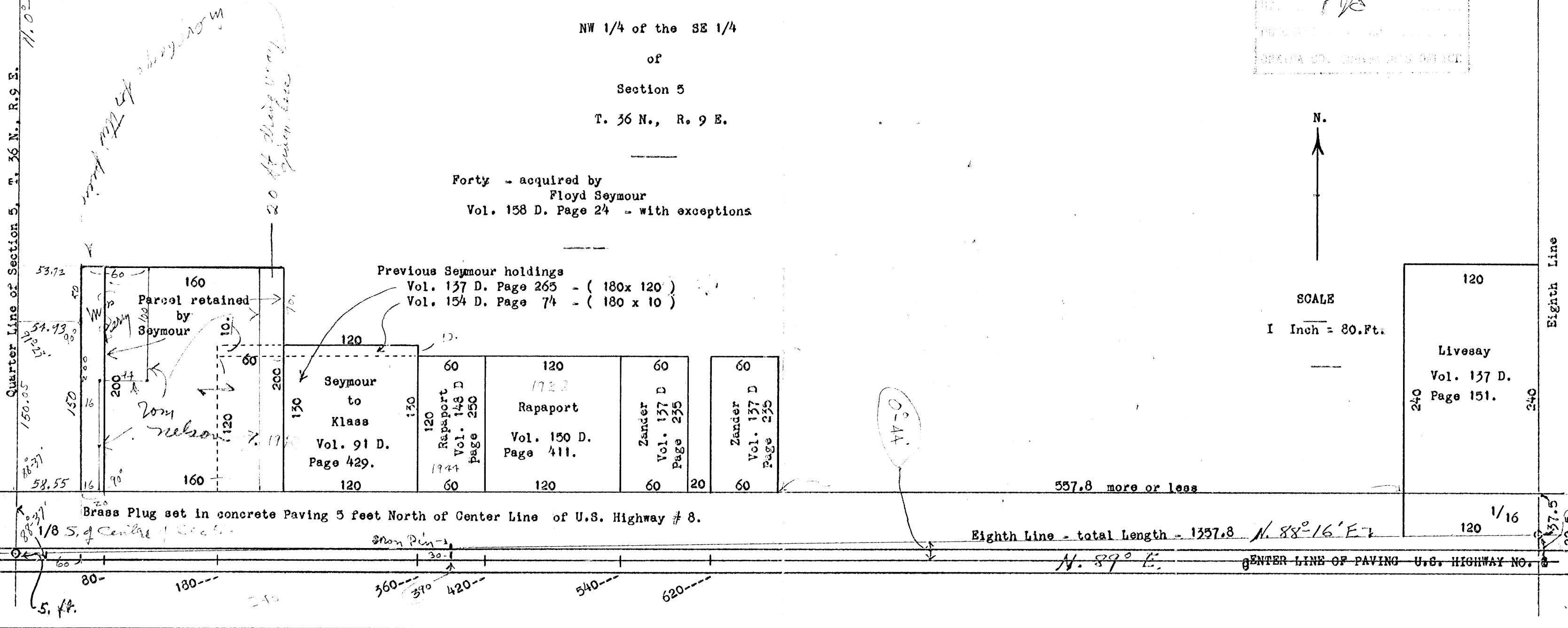
11.0°-23' E.

A 2078

APR 03 2008
 PLS
 SHELBA CO. COMMISSIONER'S OFFICE

NW 1/4 of the SE 1/4
 of
 Section 5
 T. 36 N., R. 9 E.

Forty - acquired by
 Floyd Seymour
 Vol. 158 D. Page 24 - with exceptions



A 2008

A 2078