

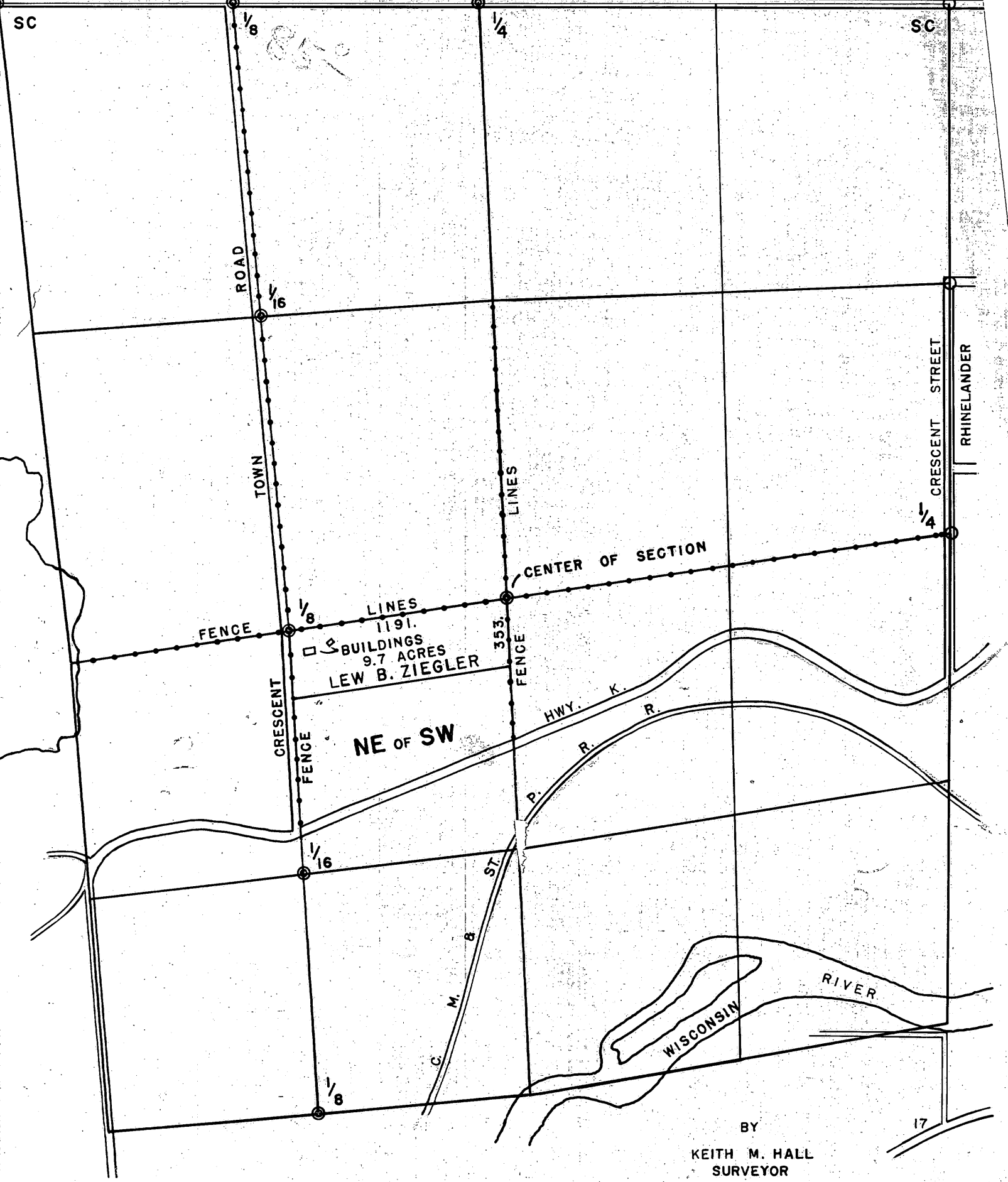
02086

2086

FILED APR 11 2008
JAB
DESCRIPTION FILED
DA CO. SURVEYOR'S OFFICE

SECTION I, T. 36 N., R. 8 E. ONEIDA COUNTY, WIS.

HWY. 8 AND 47



BY
KEITH M. HALL
SURVEYOR
RHINELANDER, WISCONSIN

086

02086