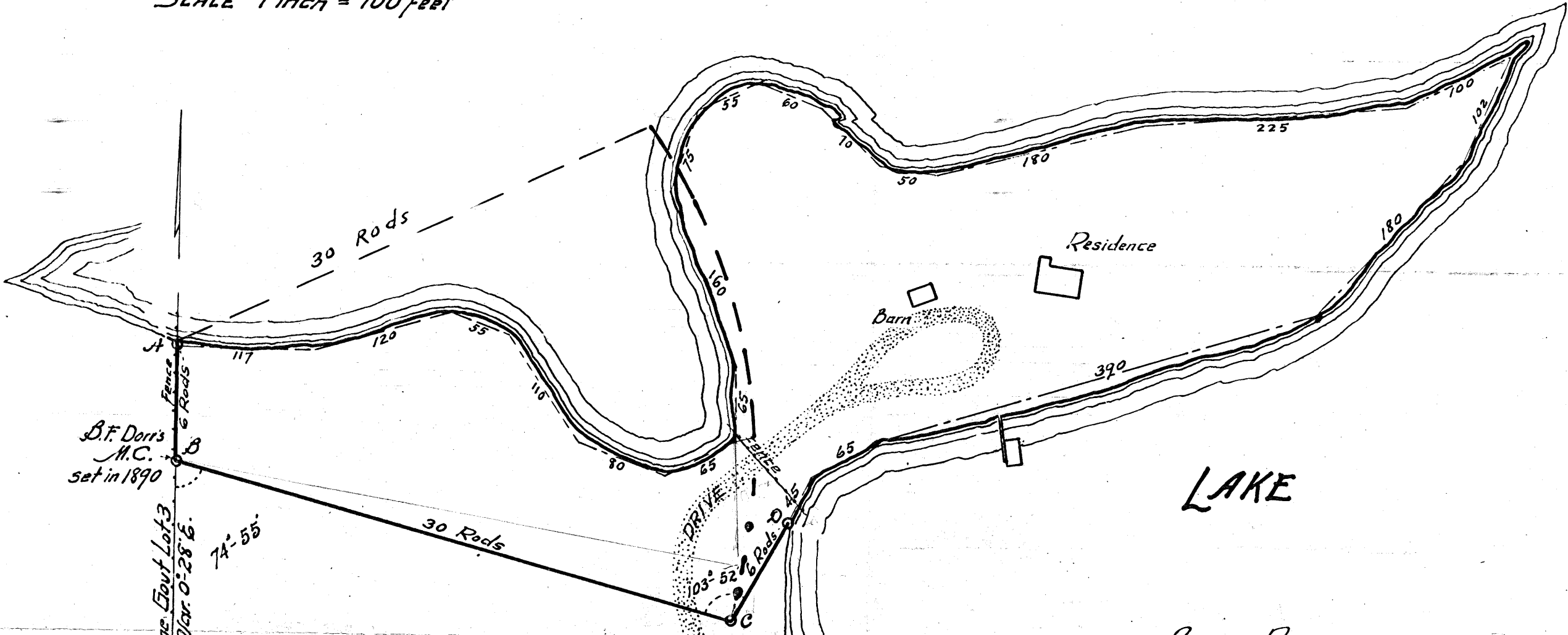


Plat of Survey
of
The DAVIS POINT
in Govt. Lot 3, Sec. 20, Tp. 36 N. R. 8 E.
Oneida County, Wis.

MAP # A2088
DATE FILED APR 11 2006
BY SAB
DESCRIPTION FILED
SURVEYOR'S OFFICE

SCALE 1 inch = 100 feet

CRESCENT



Courses (from A)

South	99 ft.	to B.
S 74° 55' E.	495	to C.
N 28° 57' E.	99	to D.
N 26° 25' E.	45	
N 60° 20' E.	65	
N 73° - E.	390	
N 42° 35' E.	180	
N 24° - E.	102	to extremity of point
S 63° 12' W.	100	
S 85° - W.	225	
S 75° 35' W.	180	
N 82° - W.	50	
N 47° - W.	70	
N 69° - W.	60	
S 64° 10' W.	55	
S 18° - W.	75	
S 21° 10' E.	160	
S 0° 10' W.	65	
S 62° 45' W.	65	
N 69° 45' W.	80	
N 34° 30' W.	110	
N 71° - W.	55	
S 73° 15' W.	120	
S 89° 55' W.	117	To A (Point of Beginning)

Containing A. 817 Acres.

Corner References

A.	Y. Pine 11" dia. bears S 21 1/2° E.	65.3 ft.
B.	Y. " 11" " " " N 32 1/4° E	44.9
	Dorr's stump " " " " " S 66° W.	20.5
C.	W. Birch 8" dia. " " " " " N 50° W.	16.95
	Tamarac 6" " " " " East	23.7
	Shore " " " " " "	47.
	E Road " " " " " West	35.
D.	Tamarac 5' " " " " " N 50° W.	31.4
	Shore " " " " " East	3.

(Iron Pipes at corners)

Surveyor's Certificate

I, Harry C. Hall, do hereby certify that in October and November, 1931, at the request of Mrs. Lucy G. N. Davis, I surveyed the above tract of land located in the north west corner of Govt. Lot Three (3) Sec. 20, Tp. 36 North, Range 8 East, Wis. That the above plat is a correct description of my survey.

Rhineland, Wis.
Nov. 5th 1931

Harry C. Hall
County Surveyor, Oneida County

RHINELANDER, WIS.
OFFICE OF COUNTY SURVEYOR
ONEIDA COUNTY

Placed on file this Nov 9th day of
November A. D. 1931.

Harry C. Hall
County Surveyor.