

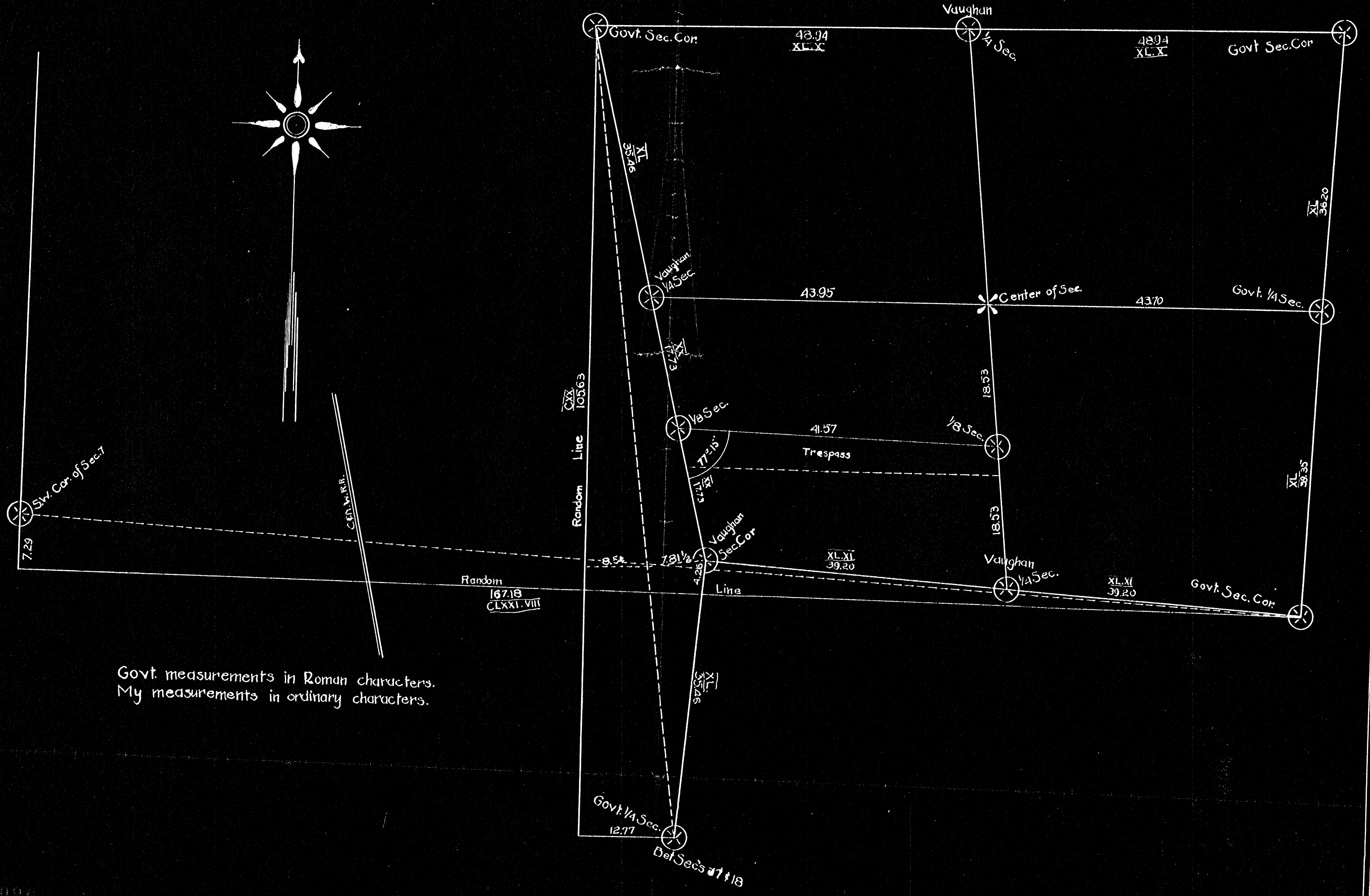
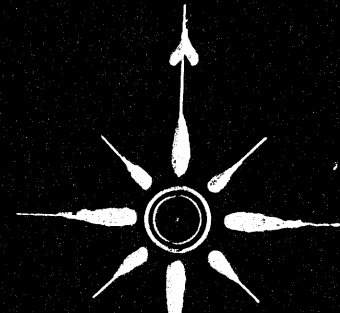
1896
 APR 22 2008
 500
 DISTRICT OF COLUMBIA
 OFFICE OF THE SURVEYOR GENERAL

1896

MAP

OF

SECTION 8 TOWNSHIP 35 NORTH RANGE 11 EAST



Govt. measurements in Roman characters.
 My measurements in ordinary characters.

1896