

A 2127A

A 2127A

PROJECT ID: 9407-03-70

COUNTY: ONEIDA

ORDER OF SHEETS

Section No. 1	Title
Section No. 2	Typical Sections and Details
Section No. 3	Estimate of Quantities
Section No. 3	Miscellaneous Quantities
Section No. 4	Right of Way Plot
Section No. 5	Plan and Profile
Section No. 6	Standard Detail Drawings
Section No. 7	Sign Plates
Section No. 8	Structure Plans
Section No. 9	Computer Earthwork Data
Section No. 9	Cross Sections

TOTAL SHEETS =



DESIGN DESIGNATION

A.A.D.T. (2006)	=	14,900	7,700
A.A.D.T. (2026)	=	30288	15,600
D.H.V.	=	4240	2184
D.D.	=	50/50	
T.	=	6	
DESIGN SPEED	=	30 M.P.H.	
ESALS	=	2,715,600	1,394,300

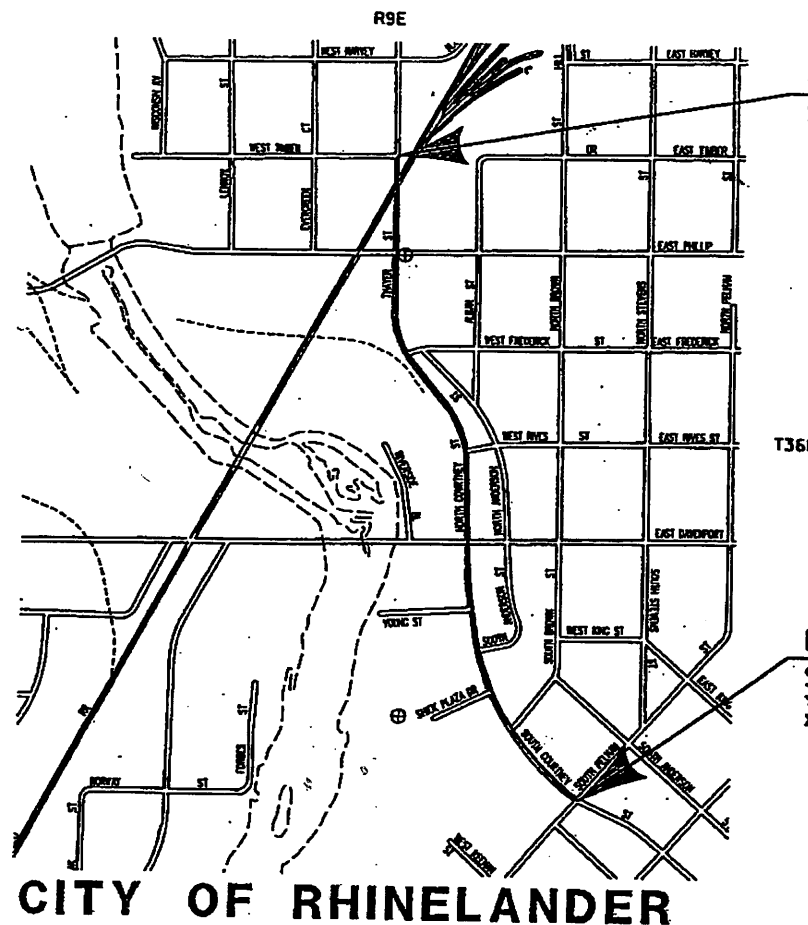
CONVENTIONAL SYMBOLS

PLAN		PROFILE	
CORPORATE LIMITS		GRADE LINE	
PROPERTY LINE		ORIGINAL GROUND	
LOT LINE		MARSH OR ROCK PROFILE (To be noted as such)	
LIMITED HIGHWAY EASEMENT		SPECIAL DITCH	
EXISTING RIGHT OF WAY		GRADE ELEVATION	
PROPOSED OR NEW R/W LINE		CULVERT (Profile View)	
SLOPE INTERCEPT		UTILITIES	
REFERENCE LINE		ELECTRIC	
EXISTING CULVERT		FIBER OPTIC	
PROPOSED CULVERT (Box or Pipe)		GAS	
COMBUSTIBLE FLUIDS		SANTARY SEWER	
MARSH AREA		STORM SEWER	
WOODED OR SHRUB AREA		TELEPHONE	
		WATER	
		UTILITY PEDESTAL	
		POWER POLE	
		TELEPHONE POLE	

STATE OF WISCONSIN DEPARTMENT OF TRANSPORTATION

PLAN OF PROPOSED IMPROVEMENT CITY OF RHINELANDER PELHAM STREET - TIMBER DRIVE COURTNEY STREET/THAYER STREET LOCAL STREET ONEIDA COUNTY

STATE PROJECT NUMBER 9407-03-70



END PROJECT 9407-03-70

STA. 40+80 Y = 166468.21 X = 262961.30

BEGIN PROJECT 9407-03-70

STA. 10+15 Y = 163645.84 X = 263756.18

LAYOUT SCALE 0 .08 MI.

TOTAL NET LENGTH OF CENTERLINE = 0.580 MI.

Coordinates on this plan are referenced to the Wisconsin County Coordinate System (WCCS), 'ONEIDA' County.

STATE PROJECT		FEDERAL PROJECT	
9407-03-70		PROJECT	CONTRACT

MAP # A 2127A DATE FILED JUN. 30. 2008 BY JAB DESCRIPTION FILED ONEIDA CO. SURVEYOR'S OFFICE

ACCEPTED FOR

CITY OF RHINELANDER

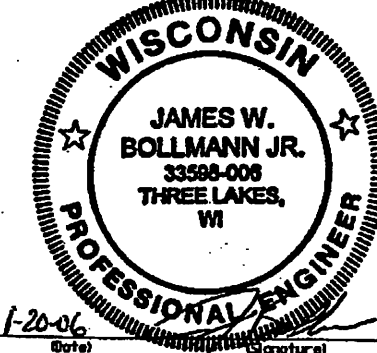
1-9-06 Richard Johnson (Signature) 1-9-06 Nancy Kain (Signature)

ORIGINAL PLANS PREPARED BY

MSA

PROFESSIONAL SERVICES

1815 E. Stevens St., Rhinelander, WI 54981 715-342-3244 1-800-844-7854 Fax: 715-342-4116



STATE OF WISCONSIN DEPARTMENT OF TRANSPORTATION

PREPARED BY: Surveyor MSA PROFESSIONAL SERVICES, Designer MSA PROFESSIONAL SERVICES, Project Manager, District Examiner, District Supervisor, C.O. Examiner

APPROVED FOR DISTRICT OFFICE

DATE: (Signature)

E

A 2127A

A 2127A

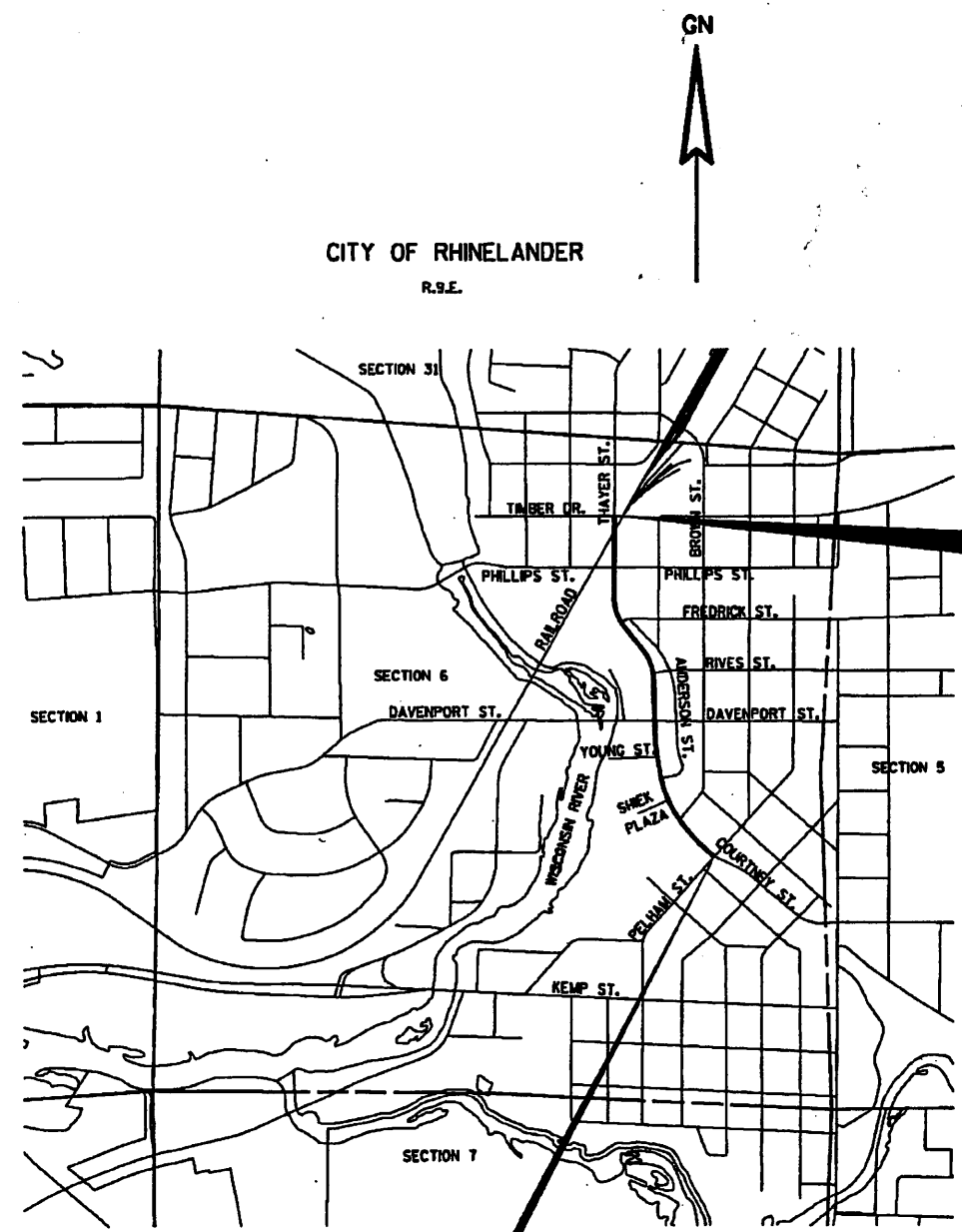
2127B

2127B

CONVENTIONAL SIGNS AND ABBREVIATIONS

**CONVENTIONAL SYMBOLS AND ABBREVIATIONS**

STATE, COUNTY, OF TOWN LINE	-----	ACCESS POINT	AP
SECTION LINE	=====	ACCESS RIGHTS	AR
QUARTER LINE	-----	ACRES	AC.
SIXTEENTH LINE	-----	AND OTHERS	ET AL.
PROPOSED REFERENCE LINE	-----	CENTERLINE	C/L
PROPOSED R/W LINE	-----	CERTIFIED SURVEY MAP DOCUMENT	CSM DOC.
EXISTING H.E. LINE	-----	HIGHWAY EASEMENT	H.E.
PROPERTY LINE	-----	LAND CONTRACT	LC
EASEMENT LINE	-----	MONUMENT	MON.
CORPORATE LIMITS	-----	PAGE	P.
EXISTING CENTERLINE	-----	PROPERTY LINE	PL
LOT & TIE LINES	-----	PERMANENT LIMITED EASEMENT	P.L.E.
UTILITIES	-----	RECORDED AS	RD001
(TELEPHONE, GAS, ELECTRIC, CABLE TV, FIBER OPTIC)	-----	REFERENCE LINE	R/L
ACCESS RESTRICTED BY PREVIOUS PROJECT/CONTROL	-----	REMAINING	REM.
NO ACCESS (BY ACQUISITION)	-----	RIGHT-OF-WAY	R/W
NO ACCESS (BY STATUTORY AUTHORITY)	-----	SECTION	SEC.
FEE (ATCH VARIES)	-----	SQUARE FEET	SQ. FT.
TEMPORARY LIMITED EASEMENT	-----	STATION	STA.
PERMANENT LIMITED EASEMENT	-----	TEMPORARY LIMITED EASEMENT	T.L.E.
PARCEL NUMBER	-----	VOLUME	V.
STON NUMBER (BY PERMITS)	-----		
BUILDING	-----		
FOUND IRON PIPE/PIN	-----		
R/W MONUMENT	-----		
R/W STANDARD	-----		
SIGN	-----		



R/W PROJECT NUMBER 9407-03-70	SHEET NUMBER 41	TOTAL SHEETS 09
FEDERAL PROJECT NUMBER		
PLAT OF RIGHT-OF-WAY REQUIRED FOR PELHAM STREET - TIMBER DRIVE		
COURTNEY-THAYER		ONEIDA CO.
CONSTRUCTION PROJECT NUMBER 9407-03-70		

**END RELOCATION ORDER**  
**STA. 41+00**  
 448.35' S. OF AND 1822.17' W. OF THE  
 NE 1/4 COR. OF SEC. 6 T36N, R9E

ACCEPTED FOR  
 CITY of RHINELANDER  
 3/3/06 Richard John  
 Date Signature

ORIGINAL PLANS PREPARED BY  
**MSA**  
 1125 N. River St. Rhinelander, WI 54228  
 715-324-3244 FAX 715-324-4116  
 © MSA PROFESSIONAL SERVICES

**WISCONSIN**  
 JEFFREY L. DEMUTH  
 8-2858  
 RHINELANDER, WI  
**LAND SURVEYOR**  
 02/20/2006  
 Date Signature

REVISION DATE  
 02/16/06

STATE OF WISCONSIN  
 DEPARTMENT OF TRANSPORTATION  
 APPROVED FOR DISTRICT OFFICE  
 DATE: \_\_\_\_\_  
 Signature: \_\_\_\_\_

**NOTES**

COORDINATES AND BEARINGS ON THIS PLAT ARE ORIENTED TO THE WISCONSIN COUNTY COORDINATE SYSTEM, ONEIDA COUNTY ZONE, NAD 83 (1983) ADJUSTMENT. THE COORDINATES SHOWN ARE GRID COORDINATES AND ARE TO BE USED AS GRID OR GROUND VALUES ON THIS PLAT.

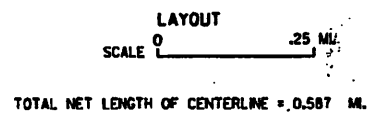
RIGHT-OF-WAY MONUMENTS WILL BE PLACED PRIOR TO THE COMPLETION OF THE PROJECT.

RIGHT-OF-WAY BOUNDARIES ARE DEFINED WITH COURSES OF THE PERIMETER OF THE HIGHWAY LANDS REFERENCED TO THE U.S. PUBLIC LAND SURVEY SYSTEM OR OTHER SURVEYS OF PUBLIC RECORD.

EXISTING STREET RIGHT-OF-WAY SHOWN HEREIN IS BASED ON THE ORIGINAL PLAT OF THE VILLAGE OF RHINELANDER, EXISTING PROPERTY IRONS AND CERTIFIED SURVEY MAPS OF RECORD

DISTANCES TO BUILDINGS ARE APPROXIMATE

**BEGIN RELOCATION ORDER**  
**STA. 10+00**  
 374.16' S. OF AND 4523.71' E. OF THE  
 NW 1/4 COR. OF SEC. 6 T36N, R9E



MAP # **2127B**  
 DATE FILED **JUN 30 2008**  
 BY **JAB**  
 DESCRIPTION FILED  
 ONEIDA CO. SURVEYOR'S OFFICE

2127B

A 2127C

A 2127C

# SCHEDULE OF LANDS & INTERESTS REQUIRED

AREAS SHOWN IN THE TOTAL ACRES COLUMN MAY BE APPROXIMATE AND ARE DERIVED FROM TAX ROLLS OR OTHER AVAILABLE SOURCES AND MAY NOT INCLUDE LANDS OF THE OWNER WHICH ARE NOT CONTIGUOUS TO THE AREA TO BE ACQUIRED.

PARCEL NUMBER	SHEET NUMBER	OWNER'S NAME	TAX NUMBER	INTEREST REQUIRED	TOTAL ACRES	R/W NEW	R/W REQUIRED TOTAL	TOTAL REMAINING ACRES	T.L.E. SQUARE FEET
1	4.04	GERALD AND JULIE SHIDELL	RH 296,RH 295	T.L.E.	0.59 AC			0.59AC	213 SQ.FT.
2	4.04	NORTHERN LAKES PUBLISHING CO.	RH 329-2	FEE & T.L.E.	0.73 AC	192 SQ.FT.	192 SQ.FT.	0.73AC	1374 SQ.FT.
3	4.04	TRYGVE A. AND TULA T. SOLBERG	RH 1308, RH 329-7	FEE & T.L.E.	11.51 AC	753 SQ.FT.	753 SQ.FT.	11.49AC	452 SQ.FT.
4	4.04,4.05	SACRED HEART-ST. MARY'S HOSPITALS, INC.	RH329	FEE	0.73 AC	162 SQ.FT.	162 SQ.FT.	0.73AC	
6	4.04,4.05	RANDALL L. AND PATRICA A. NATROP	RH 9106-0410	FEE & T.L.E.	1.08 AC	30 SQ.FT.	30 SQ.FT.	1.08AC	562 SQ.FT.
7	4.04	DEBYLE'S INC.	RH 9106-1306	FEE & T.L.E.	0.88 AC	99 SQ.FT.	99 SQ.FT.	0.88AC	460 SQ.FT.
8	4.04	FAMILY VIDEO MOVIE CLUB INC.	RH 9106-1312	FEE & T.L.E.	0.57 AC	49 SQ.FT.	49 SQ.FT.	0.57AC	263 SQ.FT.
9	4.05	PARK CITY CREDIT UNION	RH 9106-04090	T.L.E.	1.08 AC				197 SQ.FT.
11	4.05	GEORGE H. HEGEWALD	RH 221	T.L.E.	0.25 AC				262 SQ.FT.
12	4.05	NORTHWOODS MEDICAL ASSOCIATES S.C.	RH 329-6	T.L.E.	0.93 AC				16 SQ.FT.
13	4.05	GEORGE A. FAIT	RH 329-1	FEE & T.L.E.	1.42 AC	154 SQ.FT.	154 SQ.FT.	1.42AC	393 SQ.FT.
14	4.06	THOMAS AND NANETTE MORTIZ	RH 166	FEE & T.L.E.	0.79 AC	745 SQ.FT.	745 SQ.FT.	0.77AC	1242 SQ.FT.
16	4.06	MERCHANTS STATE BANK	RH 158	FEE	1.09 AC	30 SQ.FT.	30 SQ.FT.	1.09AC	
17	4.06	RAYMOND G. WEBER	RH 9106-0401	T.L.E.	0.25 AC				552 SQ.FT.
18	4.07	PEGGY J. DIBBLES N/K/A PEGGY J. COLBURN	RH 69	FEE & T.L.E.	0.59 AC	47 SQ.FT.	47 SQ.FT.	0.25AC	194 SQ.FT.
19	4.07	KUCZMARSKI REVOCABLE TRUST	RH 71-1	T.L.E.	0.12 AC				218 SQ.FT.
21	4.08	CITY OF RHINELANDER HOUSING AUTHORITY	RH 54-1	FEE	2.16 AC	5252 SQ.FT.	5252 SQ.FT.	2.04AC	
22	4.08	STEVEN ZASTROW	RH 55-1	FEE & T.L.E.	0.19 AC	103 SQ.FT.	103 SQ.FT.	0.19AC	201 SQ.FT.
23	4.08	JOHN P. AND JENNIFER U. TURZENSKI	RH 56, RH 57	T.L.E.	0.21 AC				364 SQ.FT.
24	4.08	BRUNETTE CITY CLEANERS AND LAUNDRY, INC.	RH 58, RH 57-1	T.L.E.	0.26 AC				393 SQ.FT.
26	4.08	FARVIEW MANAGEMENT, LLC	RH 59, RH59-1	T.L.E.	0.26 AC				477 SQ.FT.
27	4.08	DUSTY'S FIRESIDE INN, INC.	RH 60	T.L.E.	0.09 AC				198 SQ.FT.
28	4.08	PALM ELECTRIC SERVICE, INC.	RH 60-1	T.L.E.	0.12 AC				276 SQ.FT.
29	4.09	RONALD J. PALM	RH 34	T.L.E.	0.15 AC				365 SQ.FT.
31	4.09	MARVIN F. AND SEGUNDA SIVERTSEN	RH 34-2	T.L.E.	0.05 AC				156 SQ.FT.
32	4.09	LYNDA D. ROSNER	RH 35,RH 36, RH 36-1, RH 37	T.L.E.	0.62 AC				1555 SQ.FT.
33	4.09	SETTLE IN SERVICES, INC.	RH 38-1,RH 39-1	T.L.E.	0.21 AC				243 SQ.FT.
34	4.09	SOO LINE RAILROAD	RH 38	T.L.E.					900 SQ.FT.
36	4.09	RHINELANDER DISPOSAL SERVICE, INC.	RH-52-1	FEE	0.17 AC	2969 SQ.FT.	2969 SQ.FT.	0.10AC	
37	4.09	WISCONSIN CENTRAL LTD.	RH-54-2	T.L.E.					96 SQ.FT.
40	4.05	WISCONSIN PUBLIC SERVICE		RELEASE OF RIGHTS					
41	4.05	DONALD MANGERSON		RELEASE OF RIGHTS					
42	4.09	RHINELANDER TRANSFER & STORAGE, INC.		RELEASE OF RIGHTS					
37	4.09	WISCONSIN CENTRAL LTD.		RELEASE OF RIGHTS					

4

4

MAP # **A 2127C**  
 DATE FILED: **JUN 30 2008**  
 BY: **JAB**  
 DESCRIPTION FILED.....  
 ONEIDA CO. SURVEYOR'S OFFICE

REVISION DATE 02/16/06	DATE	SCALE, FEET 0 N/A	HWY: COURTNEY ST. COUNTY: ONEIDA	STATE R/W PROJECT NUMBER 9407-03-70 CONSTRUCTION PROJECT NUMBER	PLAT SHEET NO: 4.02 PS&E SHEET	E
---------------------------	------	----------------------	-------------------------------------	--	-----------------------------------	---

FILE NAME : K:\prway\040102\_rw.dgn

PLOT DATE : 02/21/2006

PLOT BY : MSA-PS

PLOT NAME :

PLOT SCALE : AS SHOWN

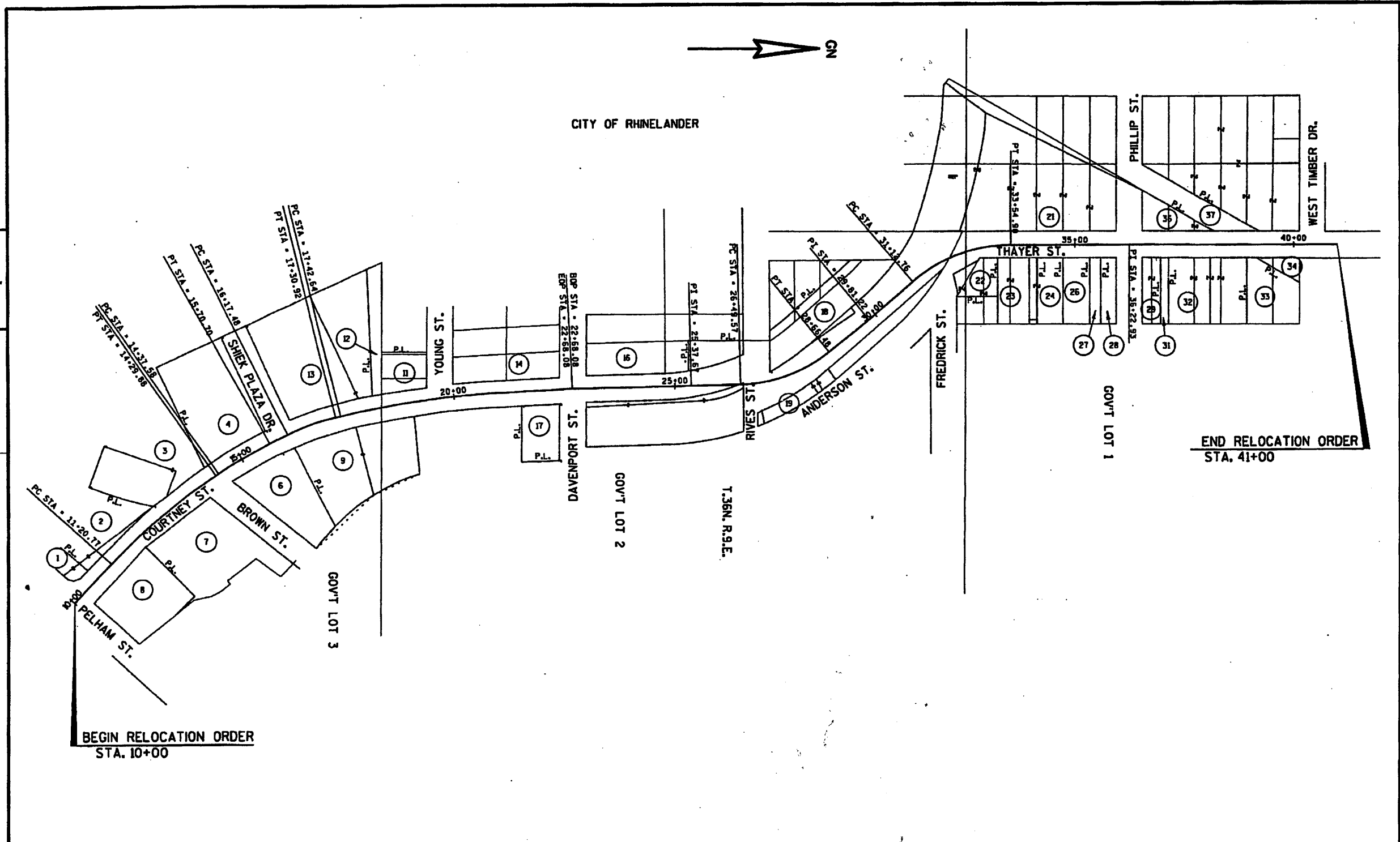
WISDOT/CADDS SHEET 60

A 2127C

A 2127C

A2127D

A2127D



4

4

REVISION DATE 02/16/06	DATE	NOT TO SCALE	HWY: COURTNEY ST. COUNTY: ONEIDA	STATE R/W PROJECT NUMBER 9407-03-70 CONSTRUCTION PROJECT NUMBER	PLAT SHEET NO: 4.03 PS&E SHEET	E
---------------------------	------	--------------	-------------------------------------	--	-----------------------------------	---

FILE NAME : K:\prow\040103\_rw.dgn

PLOT DATE : 02/21/2006

PLOT BY : MSA-PS

PLOT NAME :

PLOT SCALE : AS SHOWN

WISDOT/CADD'S SHEET TO

MAP # **A2127D**  
 DATE FILED **JUN 30 2008**  
 BY **JAB**  
 DESCRIPTION FILED  
 ONEIDA CO. SURVEYOR'S OFFICE

A2127D

82127E

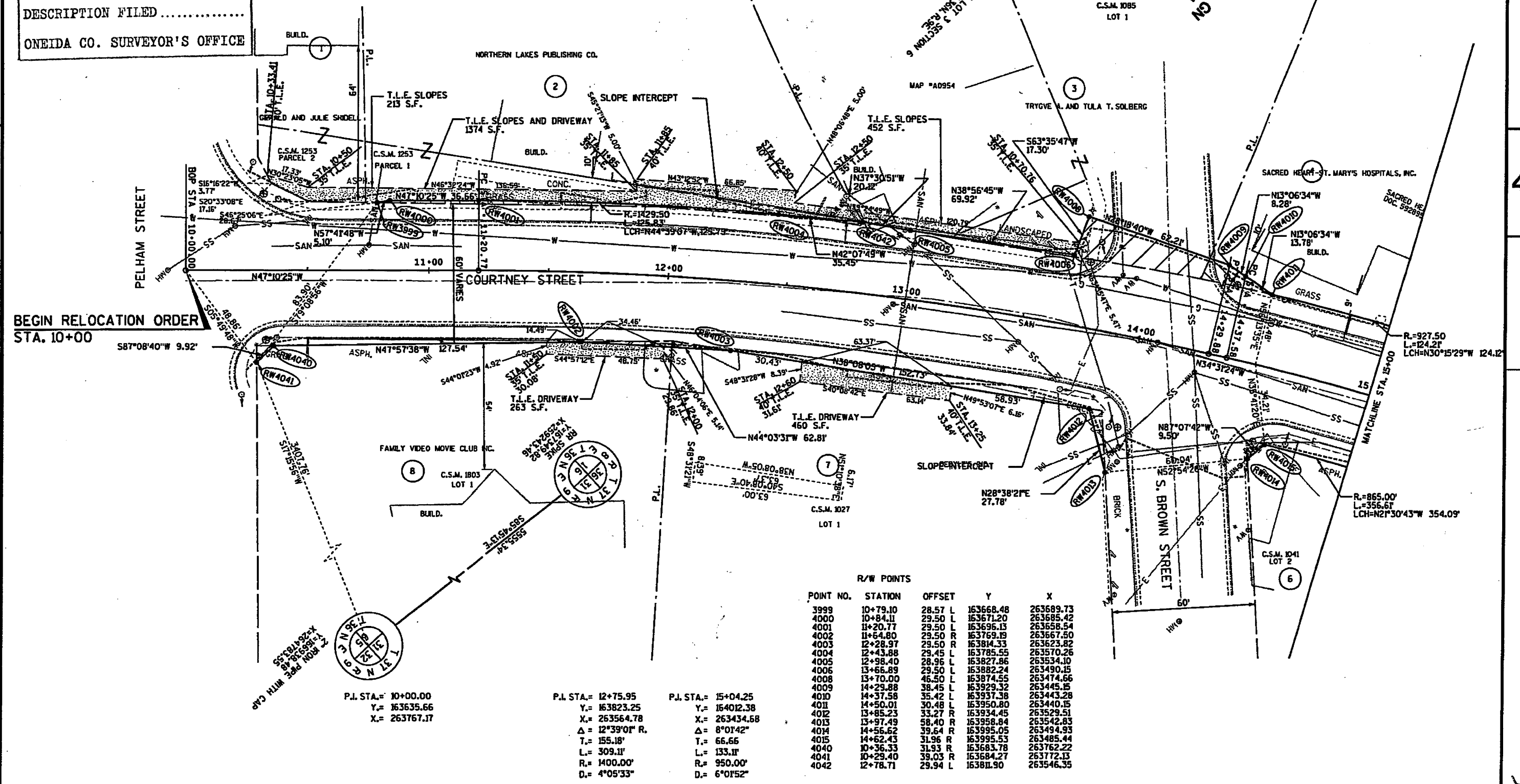
82127E

MAP # **82127E**  
 DATE FILED.....  
 BY.....  
 DESCRIPTION FILED.....  
 ONEIDA CO. SURVEYOR'S OFFICE

ORIGINAL R/W FROM  
 C.S.M. 1253  
 MAP#A0954  
 C.S.M. 1027  
 C.S.M. 1803  
 C.S.M. 1041

**CITY OF RHINELANDER**

FIRST ADDITION TO RHINELANDER



BEGIN RELOCATION ORDER  
 STA. 10+00

POINT NO.	STATION	OFFSET	Y	X
3999	10+79.10	28.57 L	163668.48	263689.73
4000	10+84.11	29.50 L	163671.20	263685.42
4001	11+20.77	29.50 L	163696.13	263658.54
4002	11+64.80	29.50 R	163769.19	263667.50
4003	12+28.97	29.50 R	163814.33	263623.82
4004	12+43.88	29.45 L	163785.55	263570.26
4005	12+98.40	28.96 L	163827.86	263534.10
4006	13+66.89	29.50 L	163882.24	263490.15
4008	13+70.00	46.50 L	163874.55	263445.56
4009	14+29.88	38.45 L	163929.32	263445.15
4010	14+37.58	35.42 L	163937.38	263445.28
4011	14+50.01	30.48 L	163950.80	263440.15
4012	13+85.23	33.27 R	163934.45	263529.51
4013	13+97.49	39.40 R	163958.84	263542.83
4014	14+56.62	39.64 R	163995.05	263494.93
4015	14+62.43	31.96 R	163995.53	263485.44
4040	10+36.33	31.93 R	163683.78	263762.22
4041	10+29.40	39.03 R	163684.27	263772.13
4042	12+78.71	29.94 L	163811.90	263546.35

P.I. STA. = 10+00.00  
 Y = 163635.66  
 X = 263767.17

P.I. STA. = 12+75.95  
 Y = 163823.25  
 X = 263564.78  
 Δ = 12°39'00" R.  
 T = 155.18'  
 L = 309.11'  
 R = 1400.00'  
 D = 4°05'33"

P.I. STA. = 15+04.25  
 Y = 164012.38  
 X = 263434.68  
 Δ = 8°01'42"  
 T = 66.66'  
 L = 133.11'  
 R = 950.00'  
 D = 6°01'52"

REVISION DATE 02/16/06	DATE	SCALE, FEET 0 20 40	HWY: COURTNEY ST.	STATE R/W PROJECT NUMBER 9407-03-70	PLAT SHEET NO: 4.04
GRID FACTOR			COUNTY: ONEIDA	CONSTRUCTION PROJECT NUMBER 9407-03-70	PS&E SHEET

FILE NAME : K:\prway\040104\_rw.dgn

PLOT DATE : 02/21/2006

PLOT BY : MSA-PS

PLOT NAME :

PLOT SCALE : AS SHOWN

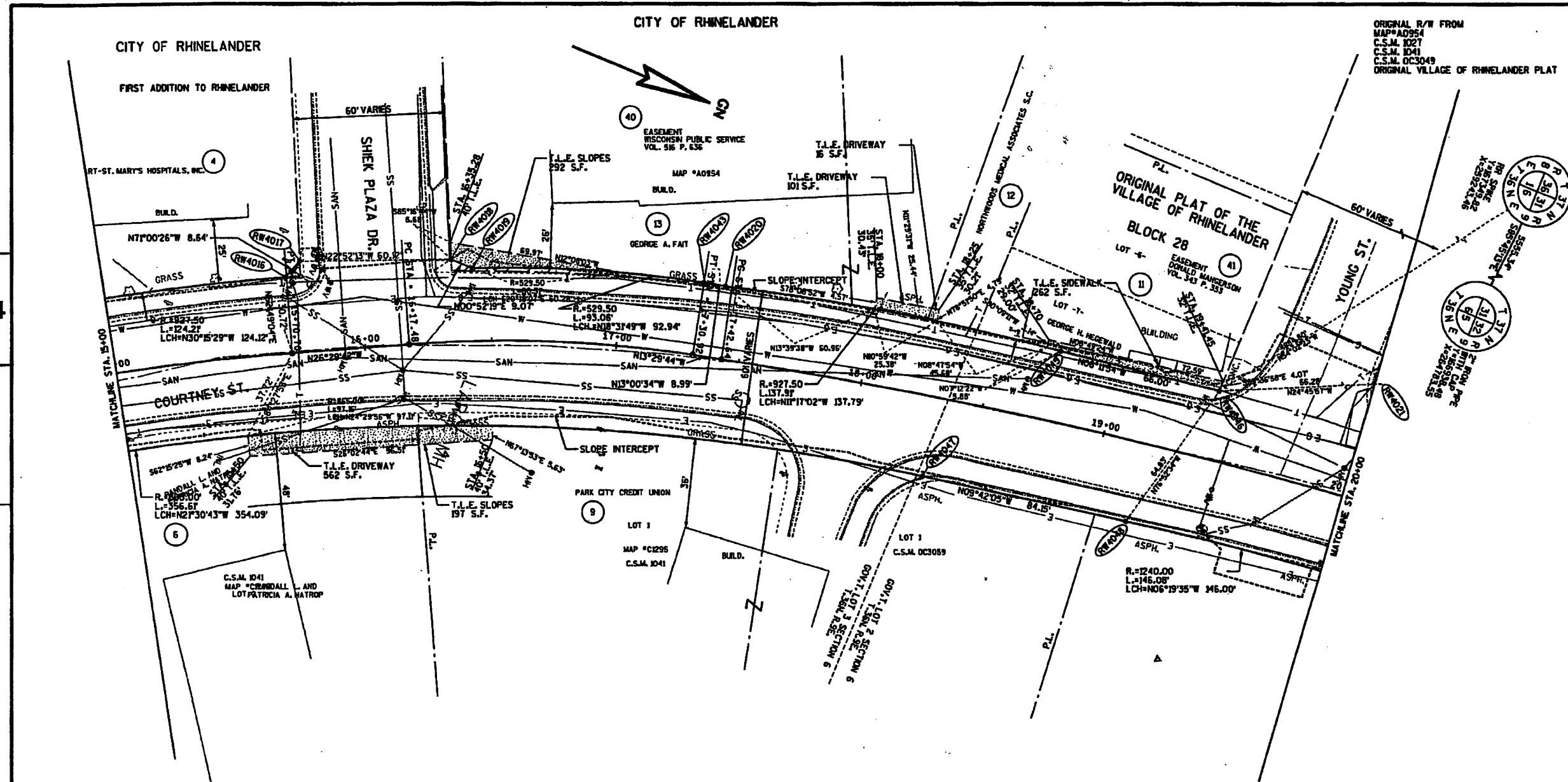
WISDOT/CADD SHEET 75

82127E

82127E

82127F

MAP # **82127F**  
 DATE FILED **JUN 30 2008**  
 BY **JAB**  
 DESCRIPTION FILED  
 ONEIDA CO. SURVEYOR'S OFFICE



R/W POINTS							
POINT NO.	STATION	OFFSET	Y	X	P.L. STA. =	P.L. STA. =	P.L. STA. =
4016	15+70.34	30.72 L	164058.01	263377.61	15+04.25	16+74.45	19+25.23
4017	15+76.49	36.78 L	164060.82	263369.44	Y = 16402.38	Y = 164164.90	Y = 164409.23
4018	16+35.31	33.32 L	164106.22	263346.07	X = 263434.68	X = 263358.65	X = 263300.01
4019	16+43.05	29.50 L	164125.79	263346.21	Δ = 8°07'42"	Δ = 12°59'58"	Δ = 10°25'58"
4020	17+39.91	29.42 L	164222.16	263334.65	T = 66.66'	T = 56.97'	T = 102.59'
4021	20+02.80	48.27 L	164482.01	263250.51	L = 133.11'	L = 133.44'	L = 364.11'
4043	17+30.32	29.50 L	164213.41	263316.67	R = 950.00'	R = 900.00'	R = 2000.00'
4045	18+75.80	26.60 L	164357.29	263287.89	D = 6°07'52"	D = 1°27'53"	D = 2°57'53"
4046	19+40.88	27.97 L	164422.62	263278.28			
4047	19+31.76	32.45 R	164324.95	263355.60			
4048	19+17.32	32.45 R	164407.90	263341.42			

REVISION DATE 02/16/06	DATE	SCALE, FEET 0 20 40	HWY: COURTNEY ST.	STATE R/W PROJECT NUMBER 9407-03-70	PLAT SHEET NO: 4.05
GRID FACTOR			COUNTY: ONEIDA	CONSTRUCTION PROJECT NUMBER 9407-03-70	PS&E SHEET <b>E</b>

FILE NAME : K:\p\way\040105\_rv.dgn PLOT DATE : 02/21/2006 PLOT BY : MSA-PS PLOT NAME : PLOT SCALE : AS SHOWN WISDOT/CADDIS SHEET 78

82127F

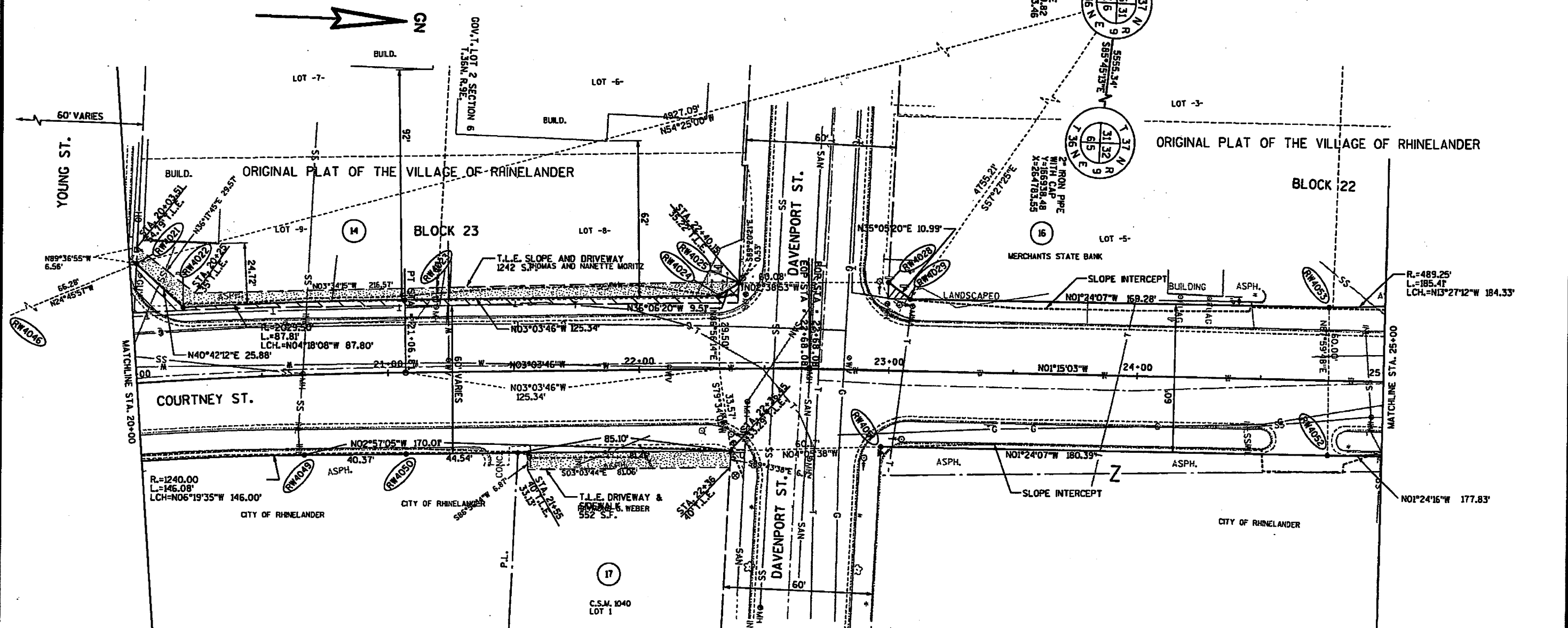
82127F

021276

021276

CITY OF RHINELANDER

ORIGINAL R/W FROM MAP#AD954 C.S.M. 1040 ORIGINAL VILLAGE OF RHINELANDER PLAT



R/W POINTS

POINT NO.	STATION	OFFSET	Y	X
4021	20+02.80	48.27 L	164482.81	263250.51
4022	20+20.28	29.50 L	164502.43	263267.39
4023	21+06.81	29.50 L	164589.98	263260.80
4024	22+32.14	29.50 L	164715.14	263254.10
4025	22+40.12	34.69 L	164722.83	263248.50
4028	22+99.11	35.52 L	164782.85	263245.72
4029	23+07.57	29.01 L	164791.84	263252.04
4046	19+40.88	27.97 L	164422.62	263278.28
4049	20+65.77	32.55 R	164553.01	263325.33
4050	21+06.81	33.04 R	164593.32	263323.25
4051	22+97.63	31.02 R	164782.82	263312.28
4052	24+78.01	30.54 R	164963.15	263307.86
4053	24+77.25	29.45 L	164961.08	263247.90

MAP # 021276  
 DATE FILED JUN 30 2006  
 BY SAB  
 DESCRIPTION FILED  
 ONEIDA CO. SURVEYOR'S OFFICE

P.L. STA.	EOP	BOP	P.L. STA.
19+25.23	22+68.08	22+68.08	25+37.67
Y.= 164409.23	Y.= 164752.60	Y.= 164752.60	Y.= 165022.13
X.= 263300.01	X.= 263281.64	X.= 263281.91	X.= 263276.03
Δ.= 10°25'58"			
T.= 182.59'			
L.= 364.17'			
R.= 2000.00'			
D.= 2°51'53"			

REVISION DATE 02/15/06	DATE	SCALE. FEET 0 20 40	HWY: COURTNEY ST.	STATE R/W PROJECT NUMBER 9407-03-70	PLAT SHEET NO: 4.06
GRID FACTOR			COUNTY: ONEIDA	CONSTRUCTION PROJECT NUMBER 9407-03-70	PS&E SHEET

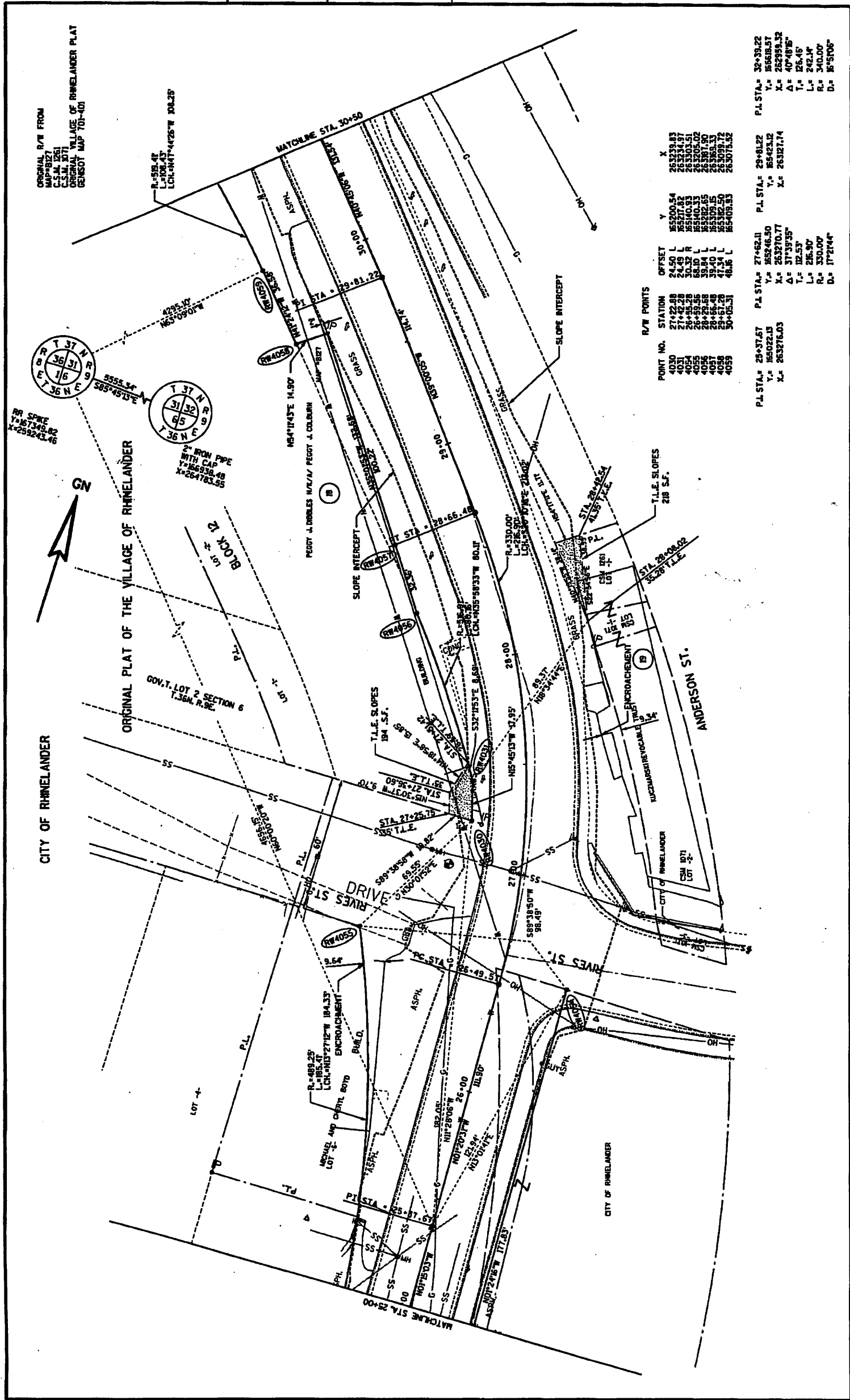
021276

021276



2127H

MAP # 2127H  
 DATE FILED JUN 30 2008  
 BY J.A.B.  
 DESCRIPTION FILED .....  
 ONEIDA CO. SURVEYOR'S OFFICE



REVISION DATE 02/16/06	DATE	SCALE, FEET 0 20 40	HWY: COURTNEY ST.	STATE R/W PROJECT NUMBER 9407-03-70	PLAT SHEET NO: 4.07
GRID FACTOR	GRID FACTOR		COUNTY: ONEIDA	CONSTRUCTION PROJECT NUMBER 9407-03-70	PS&E SHEET
FILE NAME : K:\MAP\9407\940703-70.dwg	PLOT DATE : 02/21/2008	PLOT BY : USA-PS	PLOT NAME :	PLOT SCALE : AS SHOWN	WISDOT/CADDIS SHEET 78

POINT NO.	STATION	OFFSET	Y	X
4030	27+22.88	24.50 L	85200.54	263333.83
4031	27+42.28	24.49 L	85277.82	263334.97
4032	28+33.28	30.32 R	85340.93	263303.51
4033	28+33.28	38.00 L	85340.93	263303.51
4034	28+33.28	38.00 L	85340.93	263303.51
4035	28+33.28	38.00 L	85340.93	263303.51
4036	28+33.28	38.00 L	85340.93	263303.51
4037	28+33.28	38.00 L	85340.93	263303.51
4038	28+33.28	38.00 L	85340.93	263303.51
4039	28+33.28	38.00 L	85340.93	263303.51
4040	28+33.28	38.00 L	85340.93	263303.51
4041	28+33.28	38.00 L	85340.93	263303.51
4042	28+33.28	38.00 L	85340.93	263303.51
4043	28+33.28	38.00 L	85340.93	263303.51
4044	28+33.28	38.00 L	85340.93	263303.51
4045	28+33.28	38.00 L	85340.93	263303.51
4046	28+33.28	38.00 L	85340.93	263303.51
4047	28+33.28	38.00 L	85340.93	263303.51
4048	28+33.28	38.00 L	85340.93	263303.51
4049	28+33.28	38.00 L	85340.93	263303.51
4050	28+33.28	38.00 L	85340.93	263303.51
4051	28+33.28	38.00 L	85340.93	263303.51
4052	28+33.28	38.00 L	85340.93	263303.51
4053	28+33.28	38.00 L	85340.93	263303.51
4054	28+33.28	38.00 L	85340.93	263303.51
4055	28+33.28	38.00 L	85340.93	263303.51
4056	28+33.28	38.00 L	85340.93	263303.51
4057	28+33.28	38.00 L	85340.93	263303.51
4058	28+33.28	38.00 L	85340.93	263303.51
4059	28+33.28	38.00 L	85340.93	263303.51
4060	28+33.28	38.00 L	85340.93	263303.51

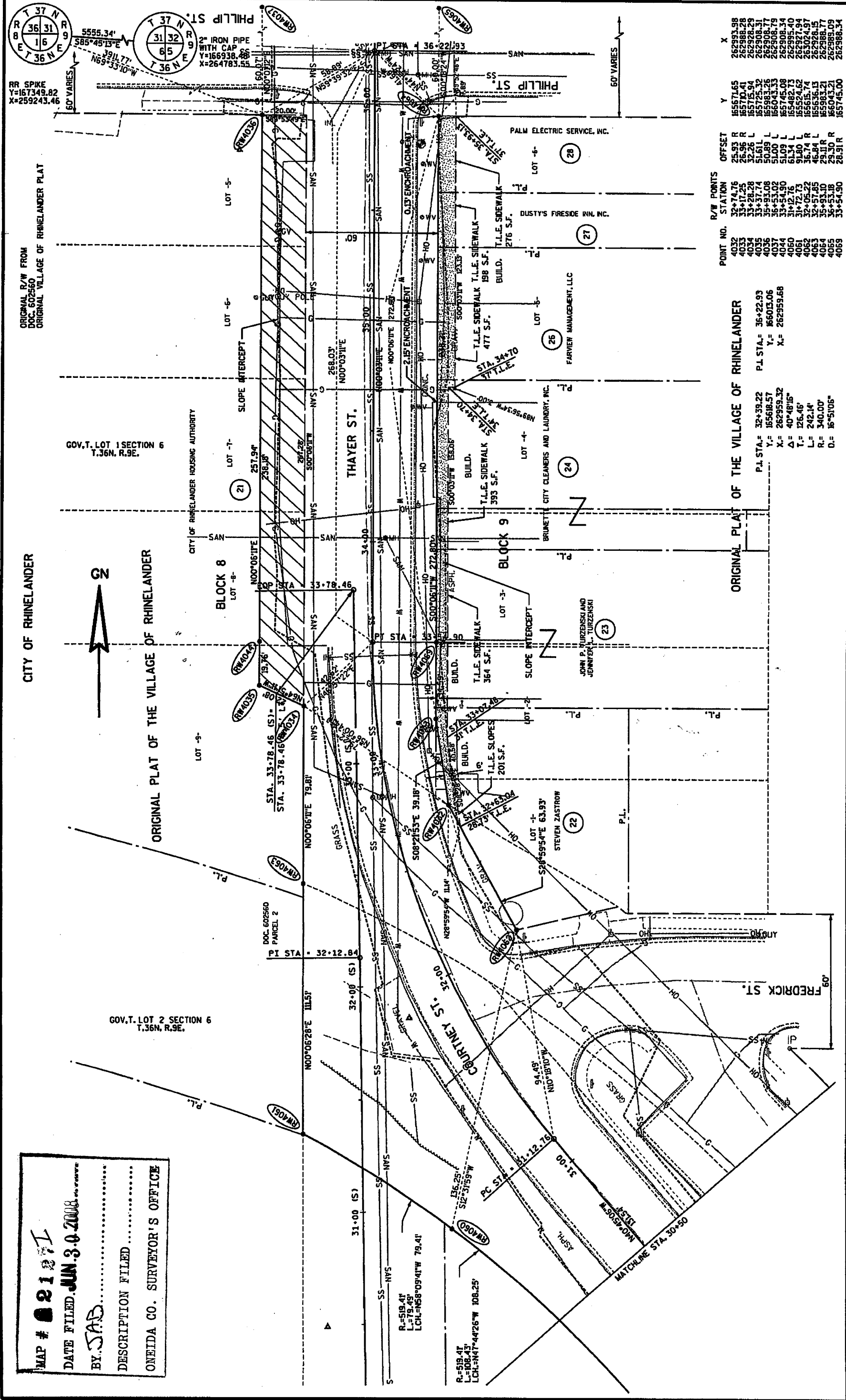
2127H

2127H



122127

122127



MAP # **21271**  
 DATE FILED **JUN 30 2008**  
 BY **SAD**  
 DESCRIPTION FILED .....  
 ONEIDA CO. SURVEYOR'S OFFICE

POINT NO.	R/W STATION	OFFSET	Y	X
4032	32+74.76	25.93 R	15571.65	262993.98
4033	33+17.25	26.96 R	15570.41	262988.29
4034	33+28.28	32.26 L	15575.94	262928.29
4035	33+37.74	51.61 L	15575.32	262908.31
4036	35+93.08	50.89 L	15593.26	262908.77
4037	36+53.02	51.00 L	15604.33	262908.79
4044	33+54.90	61.34 L	15574.08	262908.34
4061	31+72.73	91.80 L	15542.73	262995.40
4062	32+05.22	36.74 R	15524.62	262921.97
4063	32+57.85	46.84 L	15536.13	262928.15
4064	35+93.10	29.11 R	15593.21	262988.77
4065	36+53.08	29.30 R	15604.32	262989.09
4069	33+54.90	28.31 R	15574.00	262988.34

PL STA.	PL STA.	PL STA.	PL STA.
32+39.22	36+22.93	32+39.22	36+22.93
Y: 15568.57	Y: 16603.06	X: 262959.32	X: 262959.68
X: 262959.32	X: 262959.68	T: 126.46'	L: 242.14'
Δ: 40°49'15"	Δ: 40°49'15"	R: 340.00'	D: 16°51'06"

REVISION DATE 02/16/06	DATE	SCALE, FEET 0 20 40	GRID FACTOR	STATE R/W PROJECT NUMBER 9407-03-70	PLAT SHEET NO: 408
	HWY: THAYER ST.		COUNTY: ONEIDA	CONSTRUCTION PROJECT NUMBER 9407-03-70	PS&E SHEET
					E

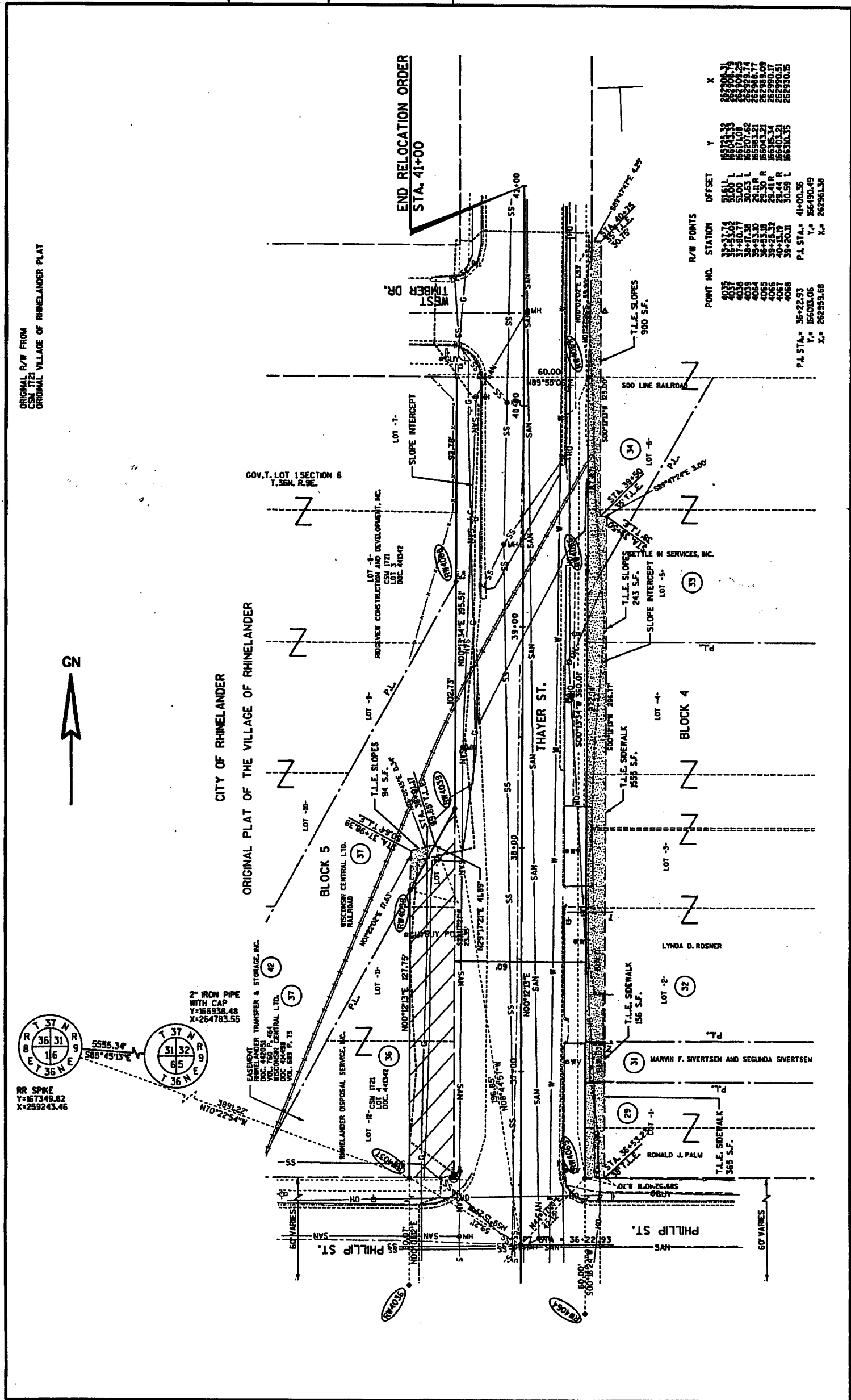
FILE NAME : K:\proway\010108\_fw.dgn  
 PLOT DATE : 02/21/2006  
 PLOT BY : MSA-PS  
 PLOT SCALE : AS SHOWN  
 WISDOT/CADD SHEET 75

122127

122127

2127

MAP # **A 2127 J**  
 DATE FILED **JUN 30 2003**  
 BY **JAB**  
 DESCRIPTION FILED .....  
 ONEIDA CO. SURVEYOR'S OFFICE



POINT NO.	STATION	OFFSET	Y	X
4035	38+22.53	51.61 L	262906.71	262906.71
4036	38+22.53	51.61 R	262906.71	262906.71
4037	38+22.53	51.61 L	262906.71	262906.71
4038	38+22.53	51.61 R	262906.71	262906.71
4039	38+22.53	51.61 L	262906.71	262906.71
4040	38+22.53	51.61 R	262906.71	262906.71
4041	38+22.53	51.61 L	262906.71	262906.71
4042	38+22.53	51.61 R	262906.71	262906.71
4043	38+22.53	51.61 L	262906.71	262906.71
4044	38+22.53	51.61 R	262906.71	262906.71
4045	38+22.53	51.61 L	262906.71	262906.71
4046	38+22.53	51.61 R	262906.71	262906.71
4047	38+22.53	51.61 L	262906.71	262906.71
4048	38+22.53	51.61 R	262906.71	262906.71
4049	38+22.53	51.61 L	262906.71	262906.71
4050	38+22.53	51.61 R	262906.71	262906.71
4051	38+22.53	51.61 L	262906.71	262906.71
4052	38+22.53	51.61 R	262906.71	262906.71
4053	38+22.53	51.61 L	262906.71	262906.71
4054	38+22.53	51.61 R	262906.71	262906.71
4055	38+22.53	51.61 L	262906.71	262906.71
4056	38+22.53	51.61 R	262906.71	262906.71
4057	38+22.53	51.61 L	262906.71	262906.71
4058	38+22.53	51.61 R	262906.71	262906.71
4059	38+22.53	51.61 L	262906.71	262906.71
4060	38+22.53	51.61 R	262906.71	262906.71
4061	38+22.53	51.61 L	262906.71	262906.71
4062	38+22.53	51.61 R	262906.71	262906.71
4063	38+22.53	51.61 L	262906.71	262906.71
4064	38+22.53	51.61 R	262906.71	262906.71
4065	38+22.53	51.61 L	262906.71	262906.71
4066	38+22.53	51.61 R	262906.71	262906.71
4067	38+22.53	51.61 L	262906.71	262906.71
4068	38+22.53	51.61 R	262906.71	262906.71
4069	38+22.53	51.61 L	262906.71	262906.71
4070	38+22.53	51.61 R	262906.71	262906.71
4071	38+22.53	51.61 L	262906.71	262906.71
4072	38+22.53	51.61 R	262906.71	262906.71
4073	38+22.53	51.61 L	262906.71	262906.71
4074	38+22.53	51.61 R	262906.71	262906.71
4075	38+22.53	51.61 L	262906.71	262906.71
4076	38+22.53	51.61 R	262906.71	262906.71
4077	38+22.53	51.61 L	262906.71	262906.71
4078	38+22.53	51.61 R	262906.71	262906.71
4079	38+22.53	51.61 L	262906.71	262906.71
4080	38+22.53	51.61 R	262906.71	262906.71
4081	38+22.53	51.61 L	262906.71	262906.71
4082	38+22.53	51.61 R	262906.71	262906.71
4083	38+22.53	51.61 L	262906.71	262906.71
4084	38+22.53	51.61 R	262906.71	262906.71
4085	38+22.53	51.61 L	262906.71	262906.71
4086	38+22.53	51.61 R	262906.71	262906.71
4087	38+22.53	51.61 L	262906.71	262906.71
4088	38+22.53	51.61 R	262906.71	262906.71
4089	38+22.53	51.61 L	262906.71	262906.71
4090	38+22.53	51.61 R	262906.71	262906.71
4091	38+22.53	51.61 L	262906.71	262906.71
4092	38+22.53	51.61 R	262906.71	262906.71
4093	38+22.53	51.61 L	262906.71	262906.71
4094	38+22.53	51.61 R	262906.71	262906.71
4095	38+22.53	51.61 L	262906.71	262906.71
4096	38+22.53	51.61 R	262906.71	262906.71
4097	38+22.53	51.61 L	262906.71	262906.71
4098	38+22.53	51.61 R	262906.71	262906.71
4099	38+22.53	51.61 L	262906.71	262906.71
4100	38+22.53	51.61 R	262906.71	262906.71

REVISION DATE 02/21/2006	DATE	SCALE, FEET 0 20 40	GRID FACTOR	HWY: THAYER ST. COUNTY: ONEIDA	STATE R/W PROJECT NUMBER 9407-03-70 CONSTRUCTION PROJECT NUMBER 9407-03-70	PLAT SHEET NO: 4.09 PS&E SHEET
-----------------------------	------	------------------------	-------------	-----------------------------------	---	-----------------------------------

FILE NAME : K:\P\04040103\_P.P-01  
 PLOT DATE : 02/21/2006  
 PLOT BY : MSA-PS  
 PLOT NAME :  
 WISDOT/CADDIS SHEET 75

A 2127 J

A 2127 J