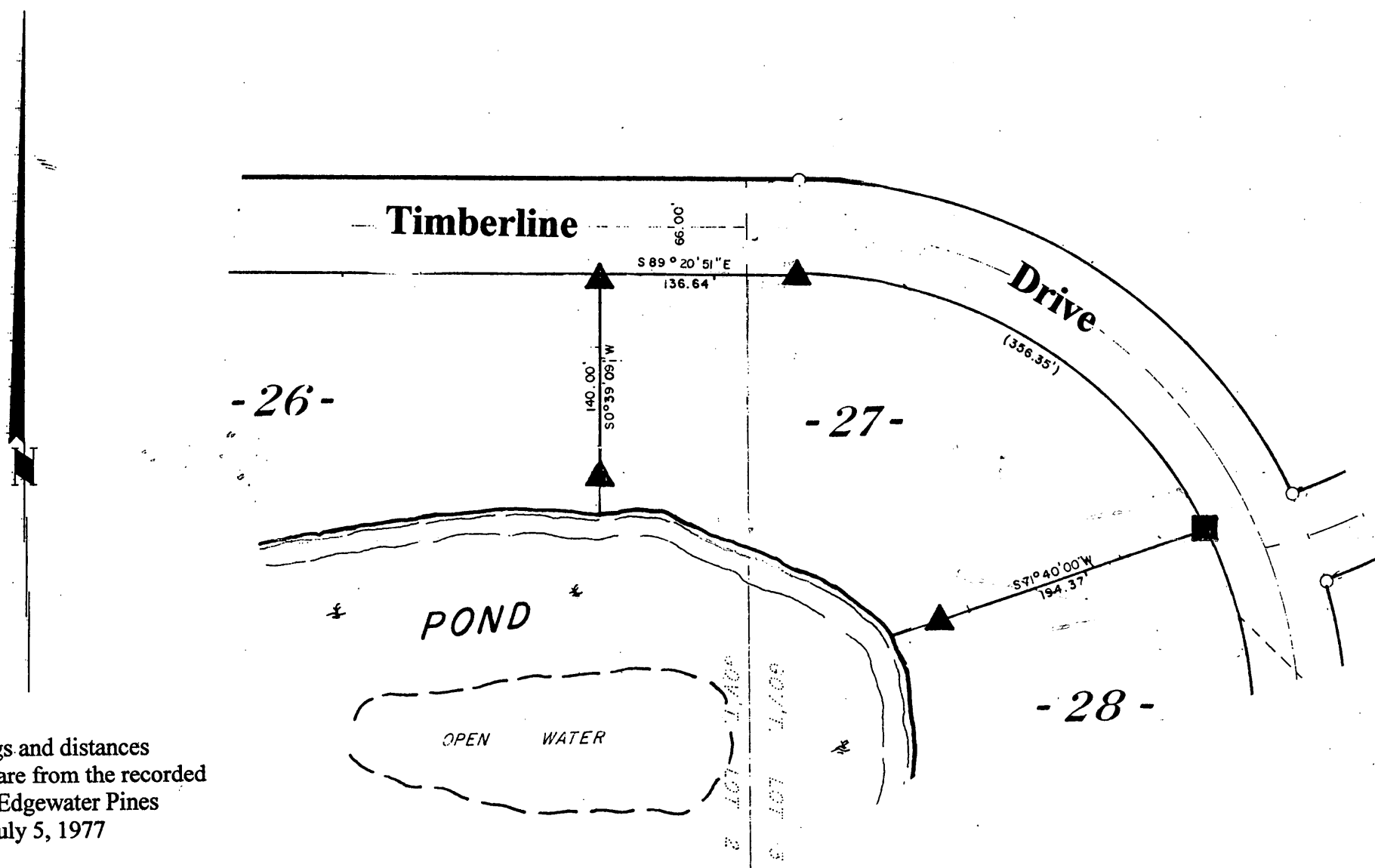


MAP # **A2157**
 DATE FILED **AUG 18 2008**
 BY **JAB**
 DESCRIPTION FILED
 ONEIDA CO. SURVEYOR'S OFFICE

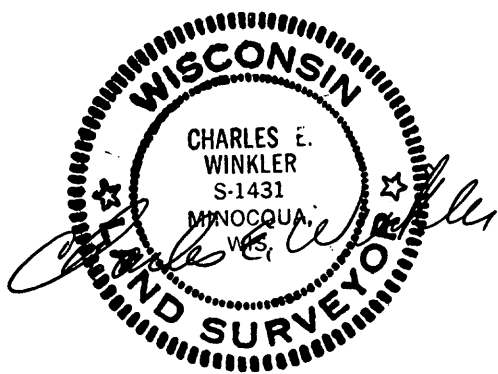
A2157

Lot 27
 of
Edgewater Pines
 in
Gov't Lots 2 and 3
Section 12, T39N, R6E
 Town of Minocqua
 Oneida County, Wisconsin



Bearings and distances shown are from the recorded plat of Edgewater Pines dated July 5, 1977

Scale: 1" = 100'



August 6, 2008

Recovered, verified, and marked monuments at the corners of Lot 27 of Edgewater Pines, as follows:

- ▲ = Iron monument found in place
- = Iron pipe reset per plat location

This survey was completed by Foltz and Associates, Inc. for the purpose of locating and verifying existing lot corners for Lot 27 of Edgewater Pines by the order of Monica Gebert, who has executed a written waiver for all other requirements of Wis. Adm. Code Chap. A-E 7. A closed traverse was not made and the minimum accuracy is 1 part in 100 and plus or minus 2°.

A2157

Foltz and Associates, Inc.

Surveyors Engineers
 8612 Highway 51 North, Minocqua, Wisconsin 54548
 (715) 356-9485 fax (715) 356-1841

A2157