

212A
COOLIDGE AVE.
244.86'
115.09'
60'

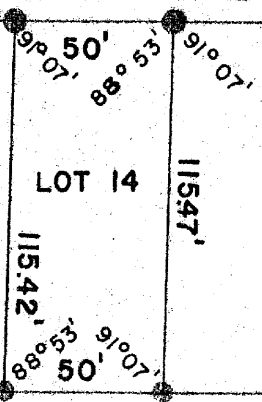
IVERSON STREET
306.36'
60'

MONICO STREET

650'

911.61'

BLOCK 2



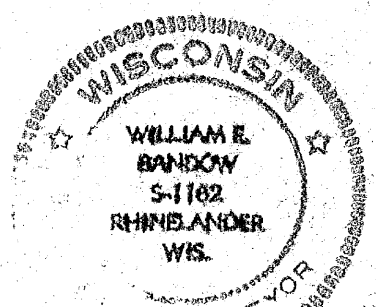
ALLEY

ROEPCKE ADDITION

JOHNSON STREET

RECEIVED & FILED #A2112
 Oneida County Surveyor's Office
 Date: FEB 10 1986
 By: MTH
 OCS Area #.....

I hereby certify that under the direction of Edward Skubal, I have surveyed and mapped the above parcel of land, and that the map above is a true and correct representation of the land surveyed to the best of my knowledge and belief.



○ EXISTING IRON PIPE
 ● SET IRON PIPE

RECEIVED & FILED #1042
 Oneida County Surveyor's Office
 Date: 27 April '77

| REVISIONS | | |
|-----------|------|----|
| NO. | DATE | BY |
| 1 | | |
| 2 | | |

EDWARD J. SKUBAL
 RFD 2, RHINELANDER, WI.