

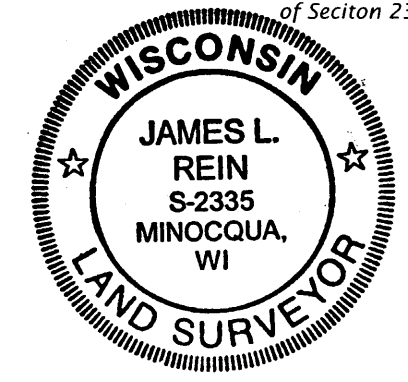
A 2215

A 2215

SECTION SUBDIVISION  
**SECTION 23, T38N, R4E**  
 Minocqua Township  
 Oneida County, Wisconsin  
**WILDERNESS SURVEYING, INC.**

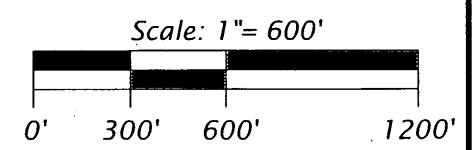
*[Signature]*  
 Registered Land Surveyor # S-2335  
 Dated this 2nd day of August, 2006

Bearings based on GPS survey data, referenced to the south line of Section 23, bearing N 89°38'35"W



MAP #	A 2215
DATE FILED	Aug 12 2006
BY	JAR
DESCRIPTION FILED	
ONEIDA CO. SUPERVISOR'S OFFICE	

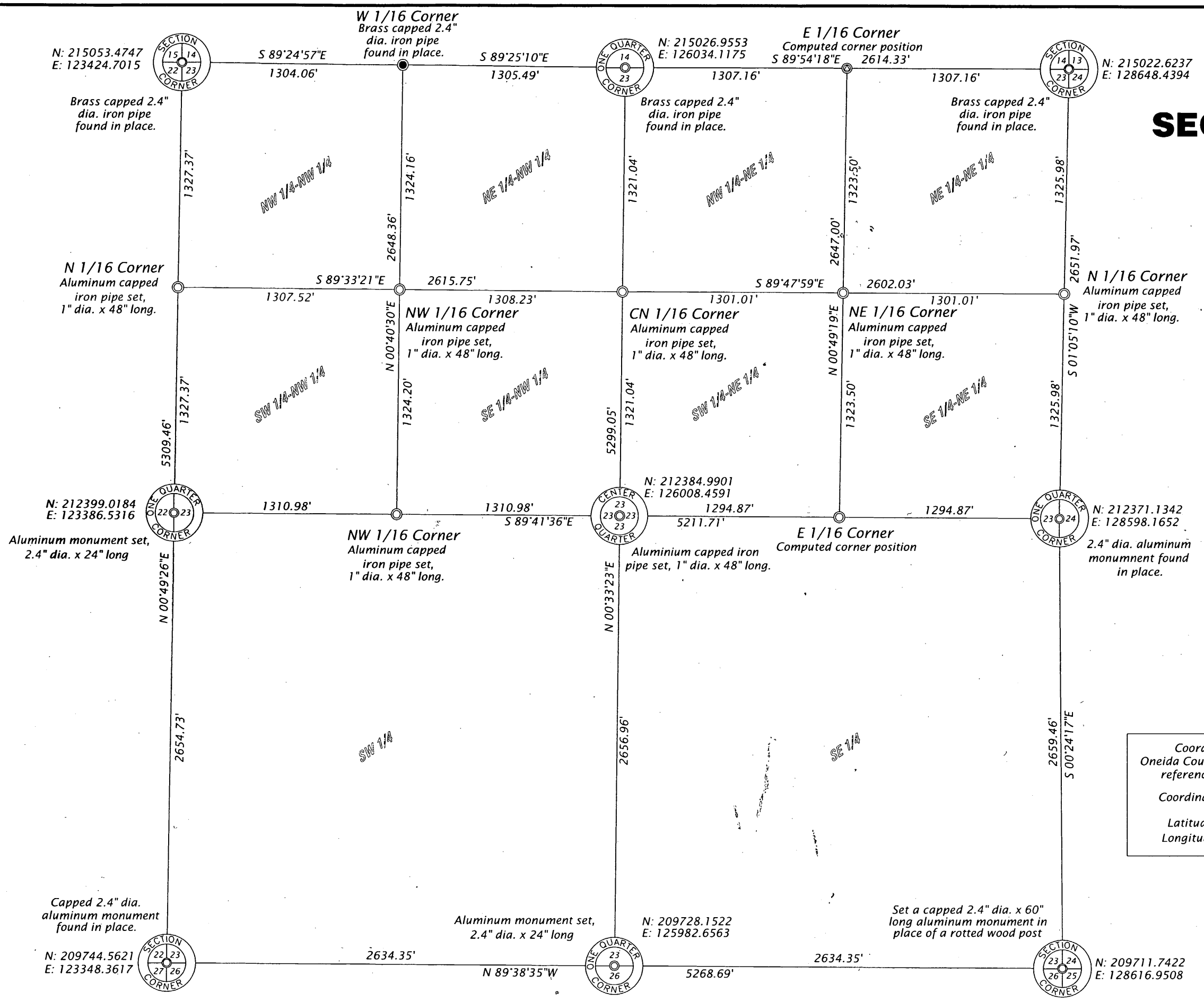
Coordinates based on Oneida County Coordinate System referenced to base #oc295  
 Coordinates: N: 214713.4553  
 E: 127741.6467  
 Latitude: 45°46'24.13997" N  
 Longitude: 89°56'42.55785" W



**WILDERNESS SURVEYING, INC.**  
 Post Office Box 1111 - 8793 Earls Court  
 Minocqua, Wisconsin 54548-1111  
 Telephone (715) 356-5100 - www.wildernesssurveying.com

Map Number: 05-97Sec-Sub  
 File Number: 23-384  
 Drafted by: Mike Schneider

Revisions:



A 2215

A 2215