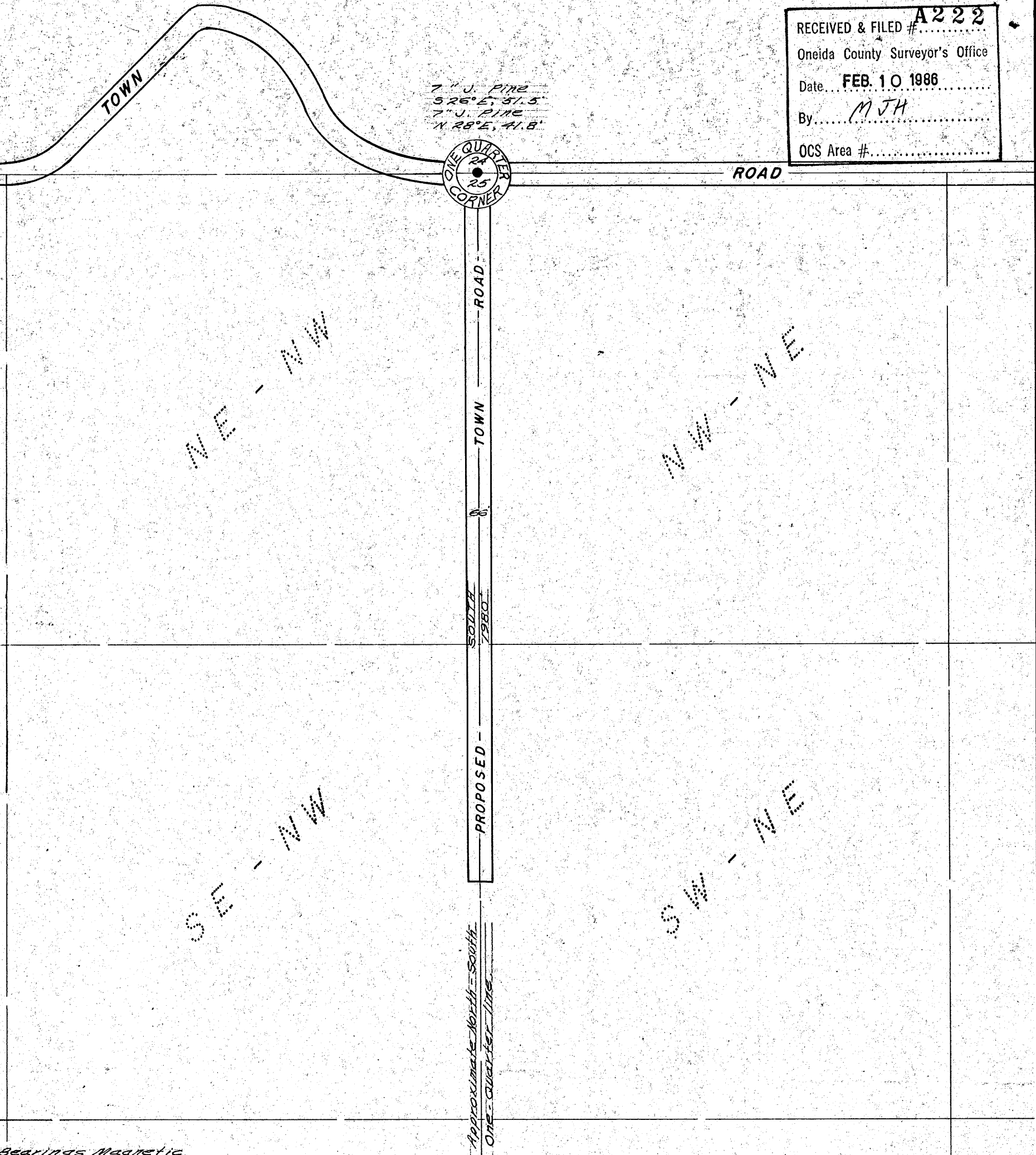


RECEIVED & FILED # **A222**  
 Oneida County Surveyor's Office  
 Date **FEB. 10 1986**  
 By **M J H**  
 OCS Area #.....

7" J. PIPE  
 S 26° E, 31.5'  
 7" J. PIPE  
 N 28° E, 41.8'



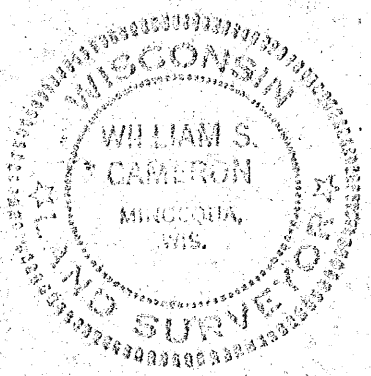
Bearings Magnetic

Part of  
**SECTION 25**  
**T36N, R5E**

Oneida County, Wis.

● = Iron pipe found in place

RECEIVED & FILED # **1133**  
 Oneida County Surveyor's Office  
 Date **18 June '77**  
 By **D. M. W. [Signature]**  
 OCS Area # **243-25-3605**



Scale 1" = 300'  
 February, 1970

Northwoods Surveyors Inc.  
**William S. Cameron**  
 Land Surveyor

**A222**