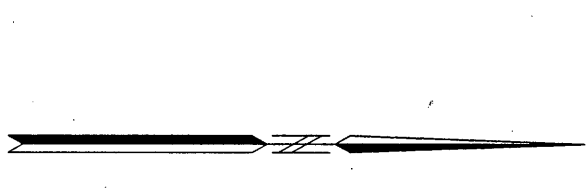
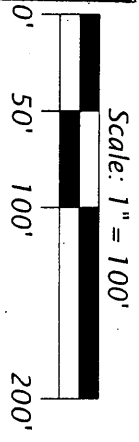
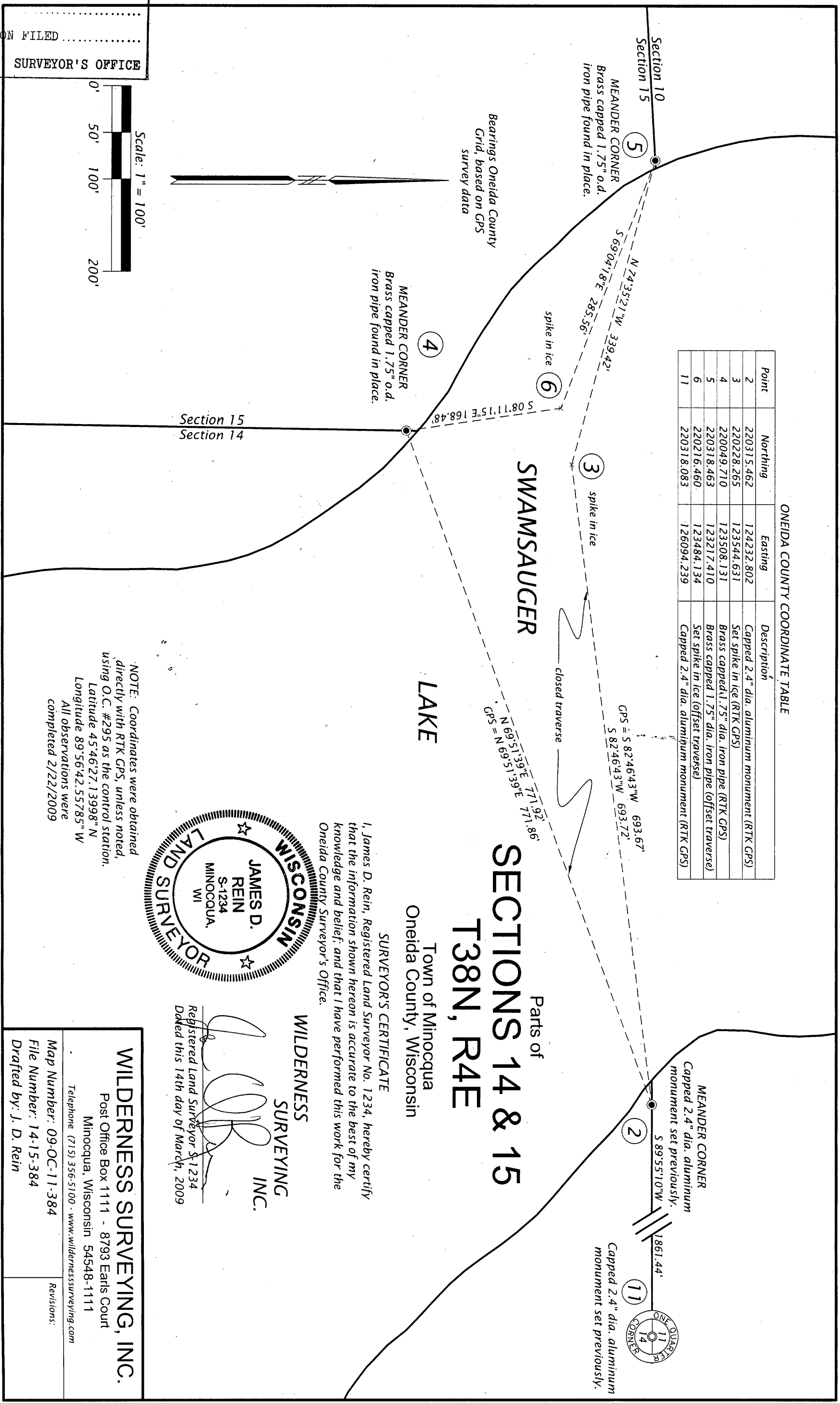


MAP # **A 2238**  
 DATE FILED **03/17/09**  
 BY **JDR**  
 DESCRIPTION FILED  
 ONEIDA CO SURVEYOR'S OFFICE

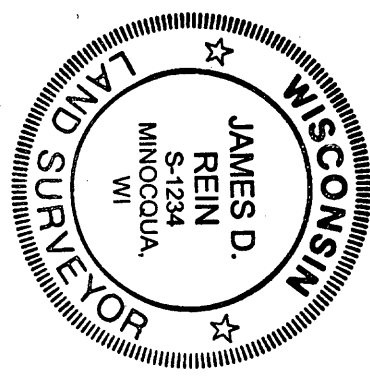


ONEIDA COUNTY COORDINATE TABLE

Point	Northing	Easting	Description
2	220315.462	124232.802	Capped 2.4" dia. aluminum monument (RTK GPS)
3	220228.265	123544.631	Set spike in ice (RTK GPS)
4	220049.710	123508.131	Brass capped 1.75" dia. iron pipe (RTK GPS)
5	220318.463	123217.410	Brass capped 1.75" dia. iron pipe (offset traverse)
6	220216.460	123484.134	Set spike in ice (offset traverse)
11	220318.083	126094.239	Capped 2.4" dia. aluminum monument (RTK GPS)



NOTE: Coordinates were obtained directly with RTK GPS, unless noted, using O.C. #295 as the control station.  
 Latitude 45°46'27.13998" N  
 Longitude 89°56'42.55785" W  
 All observations were completed 2/22/2009



**SURVEYOR'S CERTIFICATE**  
 I, James D. Rein, Registered Land Surveyor No. 1234, hereby certify that the information shown hereon is accurate to the best of my knowledge and belief; and that I have performed this work for the Oneida County Surveyor's Office.

**WILDERNESS SURVEYING, INC.**  
 Registered Land Surveyor S-1234  
 Dated this 14th day of March, 2009

**WILDERNESS SURVEYING, INC.**  
 Post Office Box 1111 - 8793 Earls Court  
 Minocqua, Wisconsin 54548-1111  
 Telephone (715) 356-5100 - www.wildernesssurveying.com  
 Map Number: 09-OC-11-384  
 File Number: 14-15-384  
 Drafted by: J. D. Rein